

# CD41/CD61 Monoclonal Antibody (CO.35E4)

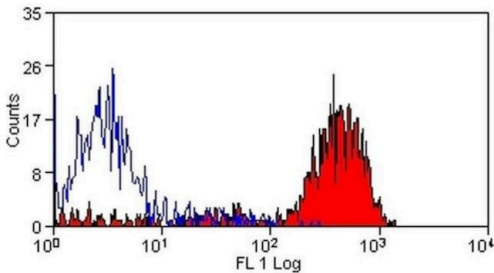
Product Details	
Size	100 µg
Species Reactivity	Bovine, Dog, Horse, Cat, Goat, Sheep, Rabbit
Published Species	Horse
Host/Isotype	Mouse / IgG1
Class	Monoclonal
Type	Antibody
Clone	CO.35E4
Conjugate	Unconjugated
Immunogen	Sheep leucocytes
Form	Liquid
Concentration	1 mg/mL
Purification	Protein A
Storage buffer	PBS
Contains	0.09% sodium azide
Storage conditions	Store at 4°C short term. For long term storage, store at -20°C, avoiding freeze/thaw cycles.
RRID	AB_2745333

Applications	Tested Dilution	Publications
Flow Cytometry (Flow)	1:50-1:200	1 Publication
ELISA (ELISA)	Assay-dependent	-
Immunoprecipitation (IP)	Assay-dependent	-

## Product Specific Information

Mouse anti Sheep CD41/CD61 antibody, clone CO.35E4 recognizes ruminant CD41/CD61, also known as GpIIb/IIIa. CD41 /CD61 is a calcium-complex dependent heterodimer and is expressed almost exclusively on platelets and on their precursors, the megakaryocytes.

## Product Images For CD41/CD61 Monoclonal Antibody (CO.35E4)



**CD41/CD61 Antibody (MA5-28370) in Flow**  
Flow cytometry of CD41/CD61 in sheep peripheral blood platelets. Sample was incubated with CD41/CD61 monoclonal antibody (Product # MA5-28370).

Flow Cytometry (1)

Antibiotics (Basel, Switzerland)	Year 2021
<b>Intrauterine Blood Plasma Platelet-Therapy Mitigates Persistent Breeding-Induced Endometritis, Reduces Uterine Infections, and Improves Embryo Recovery in Mares.</b>	Species Horse
"MA5-28370 was used in Flow Cytometry to assess the post-breeding inflammatory response, endometrial culture, and embryo recovery of mares susceptible to persistent breeding-induced endometritis (PBIE)."	
Authors: Segabinazzi LGTM,Canisso IF,Podico G,Cunha LL,Novello G,Rosser MF,Loux SC,Lima FS,Alvarenga MA	

For Research Use Only. Not for use in diagnostic procedures. Not for resale without express authorization. Products are warranted to operate or perform substantially in conformance with published Product specifications in effect at the time of sale, as set forth in the Production documentation, specifications and/or accompanying package inserts ("Documentation"). No claim of suitability for use in applications regulated by FDA is made. The warranty provided herein is valid only when used by properly trained individuals. Unless otherwise stated in the Documentation, this warranty is limited to one year from date of shipment when the Product is subjected to normal, proper and intended usage. This warranty does not extend to anyone other than the Buyer. Any model or sample furnished to Buyer is merely illustrative of the general type and quality of goods and does not represent that any Product will conform to such model or sample. NO OTHER WARRANTIES, EXPRESS OR IMPLIED, ARE GRANTED INCLUDING WITHOUT LIMITATION, IMPLIED WARRANTIES OF MERCHANTABILITY, FITNESS FOR ANY PARTICULAR PURPOSE, OR NON INFRINGEMENT. BUYER'S EXCLUSIVE REMEDY FOR NON-CONFORMING PRODUCTS DURING THE WARRANTY PERIOD IS LIMITED TO REPAIR, REPLACEMENT OF OR REFUND FOR THE NON-CONFORMING PRODUCT(S) AT SELLER'S SOLE OPTION. THERE IS NO OBLIGATION TO REPAIR, REPLACE OR REFUND FOR PRODUCTS AS THE RESULT OF (i) ACCIDENT, DISASTER OR EVENT OF FORCE MAJEURE, (ii) MISUSE, FAULT OR NEGLIGENCE OF OR BY BUYER, (iii) USE OF THE PRODUCTS IN A MANNER FOR WHICH THEY WERE NOT DESIGNED, OR (iv) IMPROPER STORAGE AND HANDLING OF THE PRODUCTS. Unless otherwise expressly stated on the Product or in the documentation accompanying the Product, the Product is intended for research only and is not to be used for any other purpose, including without limitation, unauthorized commercial uses, in vitro diagnostic uses, ex vivo or in vivo therapeutic uses, or any type of consumption by or application to human or animals.