

MHC II Monomorphic Monoclonal Antibody (YKIX334.2)

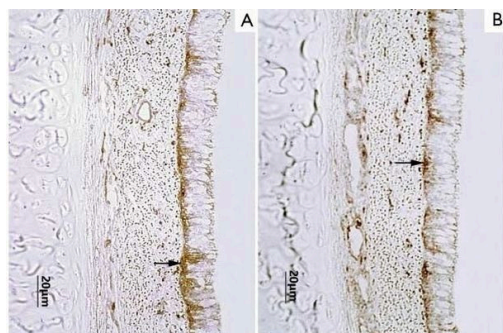
Product Details	
Size	100 µg
Species Reactivity	Dog
Published Species	Dog
Host/Isotype	Rat / IgG2a
Class	Monoclonal
Type	Antibody
Clone	YKIX334.2
Conjugate	Unconjugated
Immunogen	Con A activated canine peripheral blood cells
Form	Liquid
Concentration	1 mg/mL
Purification	Protein G
Storage buffer	PBS
Contains	0.09% sodium azide
Storage conditions	Store at 4°C short term. For long term storage, store at -20°C, avoiding freeze/thaw cycles.
RRID	AB_2745455

Applications	Tested Dilution	Publications
Immunohistochemistry (Frozen) (IHC (F))	Assay-dependent	-
Flow Cytometry (Flow)	1:50-1:100	1 Publication
Immunoprecipitation (IP)	Assay-dependent	-

Product Specific Information

Rat anti Dog MHC Class II Monomorphic antibody, clone YKIX334.2 recognizes a monomorphic epitope on canine MHC Class II and was classified at the First Canine Leucocyte Antigen Workshop (Cobbold et al. 1994).

Product Images For MHC II Monomorphic Monoclonal Antibody (YKIX334.2)



MHC II Monomorphic Antibody (MA5-28495) in IHC (F)

Flow cytometry of MHC II Monomorphic in tracheal epithelium. Samples were incubated with MHC II Monomorphic monoclonal antibody (Product # MA5-28495). Image details are as follows: A) MHC-II positivity in fresh tracheal epithelium. B) intraepithelial MHC-II after 9 months of cryopreservation, confirmed by immunostaining (immunohistochemical stain). Image referenced from: J Thorac Dis. 2017 Jul;9: 2038-47.

Flow Cytometry (1)

<p>BMC cancer</p> <p>A novel canine histiocytic sarcoma cell line: initial characterization and utilization for drug screening studies.</p> <p>"MA5-28495 was used in Flow Cytometry to fully characterize a novel canine histiocytic sarcoma cell line, and utilize it as a tool to screen for potential therapeutic drugs."</p> <p>Authors: Takada M,Parys M,Gregory-Bryson E,Vilar Saavedra P,Kiupel M,Yuzbasiyan-Gurkan V</p>	<p>Year</p> <p>2018</p> <p>Species</p> <p>Dog</p>
---	---

For Research Use Only. Not for use in diagnostic procedures. Not for resale without express authorization. Products are warranted to operate or perform substantially in conformance with published Product specifications in effect at the time of sale, as set forth in the Production documentation, specifications and/or accompanying package inserts ("Documentation"). No claim of suitability for use in applications regulated by FDA is made. The warranty provided herein is valid only when used by properly trained individuals. Unless otherwise stated in the Documentation, this warranty is limited to one year from date of shipment when the Product is subjected to normal, proper and intended usage. This warranty does not extend to anyone other than the Buyer. Any model or sample furnished to Buyer is merely illustrative of the general type and quality of goods and does not represent that any Product will conform to such model or sample. NO OTHER WARRANTIES, EXPRESS OR IMPLIED, ARE GRANTED INCLUDING WITHOUT LIMITATION, IMPLIED WARRANTIES OF MERCHANTABILITY, FITNESS FOR ANY PARTICULAR PURPOSE, OR NON INFRINGEMENT. BUYER'S EXCLUSIVE REMEDY FOR NON-CONFORMING PRODUCTS DURING THE WARRANTY PERIOD IS LIMITED TO REPAIR, REPLACEMENT OF OR REFUND FOR THE NON-CONFORMING PRODUCT(S) AT SELLER'S SOLE OPTION. THERE IS NO OBLIGATION TO REPAIR, REPLACE OR REFUND FOR PRODUCTS AS THE RESULT OF (I) ACCIDENT, DISASTER OR EVENT OF FORCE MAJEURE, (II) MISUSE, FAULT OR NEGLIGENCE OF OR BY BUYER, (III) USE OF THE PRODUCTS IN A MANNER FOR WHICH THEY WERE NOT DESIGNED, OR (IV) IMPROPER STORAGE AND HANDLING OF THE PRODUCTS. Unless otherwise expressly stated on the Product or in the documentation accompanying the Product, the Product is intended for research only and is not to be used for any other purpose, including without limitation, unauthorized commercial uses, in vitro diagnostic uses, ex vivo or in vivo therapeutic uses, or any type of consumption by or application to human or animals.