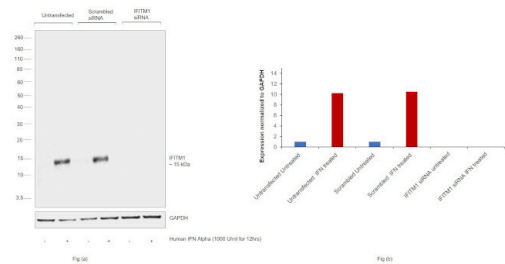


IFITM1 Recombinant Rabbit Monoclonal Antibody (021)

Product Details	
Size	100 µL
Species Reactivity	Human
Host/Isotype	Rabbit / IgG
Expression system	HEK293 cells
Class	Recombinant Monoclonal
Type	Antibody
Clone	021
Conjugate	Unconjugated
Immunogen	A synthetic peptide corresponding to the center region of the Human IFITM1
Form	Liquid
Concentration	1 mg/mL
Purification	Protein A
Storage buffer	PBS
Contains	no preservative
Storage conditions	Store at 4°C short term. For long term storage, store at -20°C, avoiding freeze/thaw cycles.
RRID	AB_2866584

Applications	Tested Dilution	Publications
Western Blot (WB)	1:500-1:2,000	-
Immunocytochemistry (ICC/IF)	1:20-1:100	-
Immunoprecipitation (IP)	1-4 µL/mg of lysate	-

Product Images For IFITM1 Recombinant Rabbit Monoclonal Antibody (021)

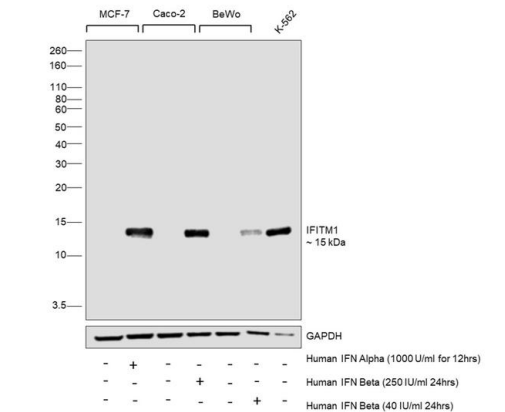


IFITM1 Antibody (MA5-35972)

Antibody specificity was demonstrated by siRNA mediated knockdown of target protein. MCF7 treated with IFN Alpha (1000 U/mL for 12hrs) cells were transfected with Interferon-induced transmembrane protein 1 siRNA and decrease in signal intensity was observed in Western Blot application using Anti-IFITM1 Recombinant Rabbit Monoclonal Antibody (021) (Product # MA5-35972). {KD}

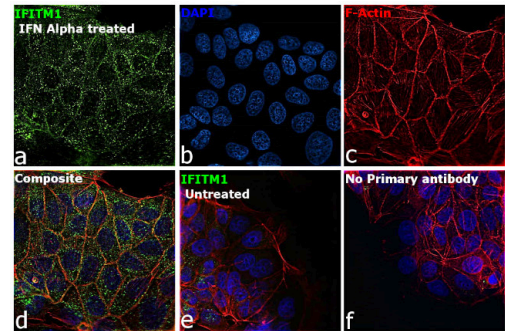
IFITM1 Antibody (MA5-35972) in WB

Western blot was performed using Anti-IFITM1 Recombinant Rabbit Monoclonal Antibody (021) (Product # MA5-35972) and a 15 kDa band corresponding to IFITM1 was observed across cell lines tested. Membrane enriched extracts (40 µg lysate) of MCF7 (Lane 1), MCF7 treated with Human IFN Alpha (1000 U/mL for 12hrs) (Lane 2), Caco-2 (Lane 3), Caco2 treated with Human IFN Beta (250 IU /mL 24hrs) (Lane 4), BeWo (Lane 5), BeWo treated with Human IFN Beta (40 IU /mL 24hrs) (Lane 6) and K-562 (Lane 7) were electrophoresed using Novex™ 16% Tricine Protein Gel (Product # EC6695BOX), 10 well. Resolved proteins were then transferred onto a nitrocellulose membrane (Product # IB23001) by iBlot® 2 Dry Blotting System (Product # IB21001). The blot was probed with the primary antibody (1:1000 dilution) and detected by chemiluminescence with Goat anti-Rabbit IgG (Heavy Chain) Superclonal™ Recombinant Secondary Antibody, HRP (Product # A27036, 1:20,000 dilution) using the iBright™ FL1500 Imaging System (Product # A44115). Chemiluminescent detection was performed using SuperSignal™ West Pico PLUS Chemiluminescent Substrate (Product # 34580).



IFITM1 Antibody (MA5-35972) in ICC/IF

Immunofluorescence analysis of IFITM1 was performed using 70% confluent log phase MCF7 treated with Human IFN Alpha A (1000 U/mL for 24hrs) cells. The cells were fixed with 4% paraformaldehyde for 10 minutes, permeabilized with 0.1% Triton™ X-100 for 15 minutes, and blocked with 2% BSA for 45 minutes at room temperature. The cells were labeled with IFITM1 Recombinant Rabbit Monoclonal Antibody (021) (Product # MA5-35972) at 1:100 dilution in 0.1% BSA, incubated at 4 degree Celsius overnight and then labeled with Donkey anti-Rabbit IgG (H+L) Highly Cross-Adsorbed Secondary Antibody, Alexa Fluor Plus 488 (Product # A32790, 1:2000 dilution), for 45 minutes at room temperature (Panel a: Green). Nuclei (Panel b:Blue) were stained with ProLong™ Diamond Antifade Mountant with DAPI (Product # P36962). F-actin (Panel c: Red) was stained with Rhodamine Phalloidin (Product # R415, 1:300 dilution). Panel d represents the merged image showing cytoplasmic as well as membrane localization .Panel e represents untreated cells. Panel f represents control cells with no primary antibody to assess background. The images were captured at 60X magnification.



View more figures on thermofisher.cn

For Research Use Only. Not for use in diagnostic procedures. Not for resale without express authorization. Products are warranted to operate or perform substantially in conformance with published Product specifications in effect at the time of sale, as set forth in the Production documentation, specifications and/or accompanying package inserts ("Documentation"). No claim of suitability for use in applications regulated by FDA is made. The warranty provided herein is valid only when used by properly trained individuals. Unless otherwise stated in the Documentation, this warranty is limited to one year from date of shipment when the Product is subjected to normal, proper and intended usage. This warranty does not extend to anyone other than the Buyer. Any model or sample furnished to Buyer is merely illustrative of the general type and quality of goods and does not represent that any Product will conform to such model or sample. NO OTHER WARRANTIES, EXPRESS OR IMPLIED, ARE GRANTED INCLUDING WITHOUT LIMITATION, IMPLIED WARRANTIES OF MERCHANTABILITY, FITNESS FOR ANY PARTICULAR PURPOSE, OR NON-INFRINGEMENT. BUYER'S EXCLUSIVE REMEDY FOR NON-CONFORMING PRODUCTS DURING THE WARRANTY PERIOD IS LIMITED TO REPAIR, REPLACEMENT OF OR REFUND FOR THE NON-CONFORMING PRODUCT(S) AT SELLER'S SOLE OPTION. THERE IS NO OBLIGATION TO REPAIR, REPLACE OR REFUND FOR PRODUCTS AS THE RESULT OF (I) ACCIDENT, DISASTER OR EVENT OF FORCE MAJEURE, (II) MISUSE, FAULT OR NEGLIGENCE OF OR BY BUYER, (III) USE OF THE PRODUCTS IN A MANNER FOR WHICH THEY WERE NOT DESIGNED, OR (IV) IMPROPER STORAGE AND HANDLING OF THE PRODUCTS. Unless otherwise expressly stated on the Product or in the documentation accompanying the Product, the Product is intended for research only and is not to be used for any other purpose, including without limitation, unauthorized commercial uses, in vitro diagnostic uses, ex vivo or in vivo therapeutic uses, or any type of consumption by or application to human or animals.