

Human Serum Albumin Recombinant Rabbit Monoclonal Antibody (101), FITC

Product Details	
Size	100 Tests
Species Reactivity	Human
Host/Isotype	Rabbit / IgG
Expression system	HEK293 cells
Class	Recombinant Monoclonal
Type	Antibody
Clone	101
Conjugate	FITC
Excitation/Emission Max	498/517 nm
Immunogen	Human Serum Albumin
Form	Liquid
Concentration	100 µg/mL
Purification	Protein A
Storage buffer	PBS with 0.5% BSA
Contains	0.03% ProClin 300
Storage conditions	4° C, store in dark, DO NOT FREEZE!

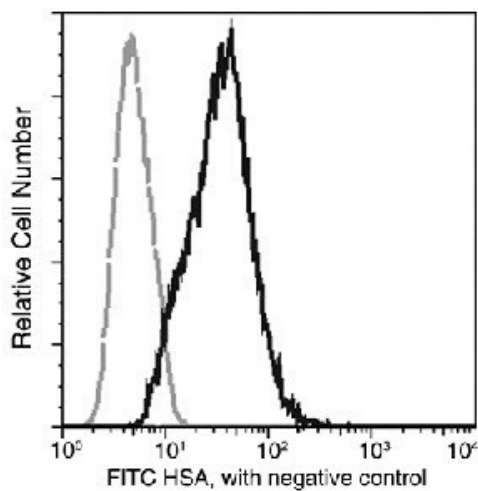
Applications	Tested Dilution	Publications
Flow Cytometry (Flow)	10 µL/test	-

Product Specific Information

Preparation: This antibody was obtained from a rabbit immunized with purified Human Serum Albumin, and conjugated with FITC under optimum conditions, the unreacted FITC was removed.

Storage: This antibody can be stored at 2C-8C for twelve months without detectable loss of activity. Protected from prolonged exposure to light. Do not freeze! Sodium azide is toxic to cells and should be disposed of properly. Flush with large volumes of water during disposal.

Product Images For Human Serum Albumin Recombinant Rabbit Monoclonal Antibody (101), FITC



Human Serum Albumin Antibody (MA5-46869) in Flow

Flow cytometry analysis of Human Serum Albumin in HepG2 cells using Human Serum Albumin, FITC Recombinant Monoclonal (Product # MA5-46869). The fluorescence histograms were derived from gated events with the forward and side light-scatter characteristics of intact cells.

For Research Use Only. Not for use in diagnostic procedures. Not for resale without express authorization. Products are warranted to operate or perform substantially in conformance with published Product specifications in effect at the time of sale, as set forth in the Production documentation, specifications and/or accompanying package inserts ("Documentation"). No claim of suitability for use in applications regulated by FDA is made. The warranty provided herein is valid only when used by properly trained individuals. Unless otherwise stated in the Documentation, this warranty is limited to one year from date of shipment when the Product is subjected to normal, proper and intended usage. This warranty does not extend to anyone other than the Buyer. Any model or sample furnished to Buyer is merely illustrative of the general type and quality of goods and does not represent that any Product will conform to such model or sample. NO OTHER WARRANTIES, EXPRESS OR IMPLIED, ARE GRANTED INCLUDING WITHOUT LIMITATION, IMPLIED WARRANTIES OF MERCHANTABILITY, FITNESS FOR ANY PARTICULAR PURPOSE, OR NON-INFRINGEMENT. BUYER'S EXCLUSIVE REMEDY FOR NON-CONFORMING PRODUCTS DURING THE WARRANTY PERIOD IS LIMITED TO REPAIR, REPLACEMENT OF OR REFUND FOR THE NON-CONFORMING PRODUCT(S) AT SELLER'S SOLE OPTION. THERE IS NO OBLIGATION TO REPAIR, REPLACE OR REFUND FOR PRODUCTS AS THE RESULT OF (i) ACCIDENT, DISASTER OR EVENT OF FORCE MAJEURE, (ii) MISUSE, FAULT OR NEGLIGENCE OF OR BY BUYER, (iii) USE OF THE PRODUCTS IN A MANNER FOR WHICH THEY WERE NOT DESIGNED, OR (iv) IMPROPER STORAGE AND HANDLING OF THE PRODUCTS. Unless otherwise expressly stated on the Product or in the documentation accompanying the Product, the Product is intended for research only and is not to be used for any other purpose, including without limitation, unauthorized commercial uses, in vitro diagnostic uses, ex vivo or in vivo therapeutic uses, or any type of consumption by or application to human or animals.