

Transferrin Chimeric Recombinant Rabbit Monoclonal Antibody (TW4.20)

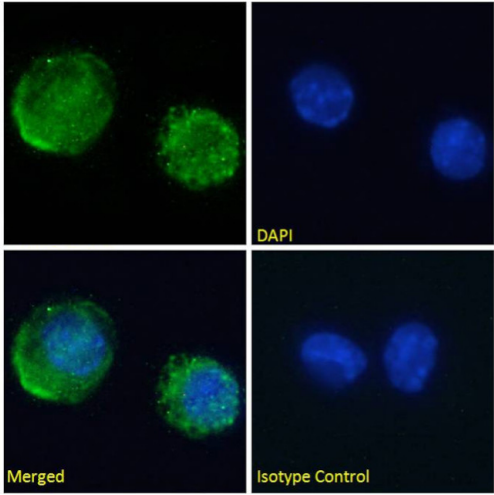
Product Details	
Size	200 µg
Species Reactivity	Human
Host/Isotype	Rabbit / IgG, kappa
Expression system	HEK293 cells
Class	Recombinant Monoclonal
Type	Antibody
Clone	TW4.20
Conjugate	Unconjugated
Immunogen	Iron-free purified human transferrin.
Form	Liquid
Concentration	1 mg/mL
Purification	Protein A
Storage buffer	PBS
Contains	0.02% ProClin 300
Storage conditions	Store at 4°C short term. For long term storage, store at -20°C, avoiding freeze/thaw cycles.

Applications	Tested Dilution	Publications
Western Blot (WB)	Assay-dependent	-
Immunocytochemistry (ICC/IF)	10 µg/mL	-
Flow Cytometry (Flow)	Assay-dependent	-
ELISA (ELISA)	Assay-dependent	-
Inhibition Assays (IA)	Assay-dependent	-

Product Specific Information

Specificity: Binds to the N-terminal domain of human transferrin.

Product Images For Transferrin Chimeric Recombinant Rabbit Monoclonal Antibody (TW4.20)



Transferrin Chimeric Antibody (MA5-48035) in ICC/IF
Immunocytochemistry/Immunofluorescence analysis of Transferrin in HepG2 cells using Transferrin Chimeric Monoclonal Antibody (Product # MA5-48035). Paraformaldehyde-fixed cells were immobilized on cover slips and stained with Transferrin Chimeric Monoclonal Antibody at 10 µg/mL for 1h followed by Alexa Fluor488 secondary antibody (1 µg/mL), showing diffuse cytoplasmic staining, likely from protein in trafficking vesicles. The nuclear stain is DAPI (blue). Panels show from left-right, top-bottom Transferrin Chimeric Monoclonal Antibody, DAPI, merged channels and an isotype control. The isotype control was stained with FITC Chimeric Monoclonal Antibody (Product # MA5-47752) followed by Alexa Fluor488 secondary antibody.

For Research Use Only. Not for use in diagnostic procedures. Not for resale without express authorization. Products are warranted to operate or perform substantially in conformance with published Product specifications in effect at the time of sale, as set forth in the Production documentation, specifications and/or accompanying package inserts ("Documentation"). No claim of suitability for use in applications regulated by FDA is made. The warranty provided herein is valid only when used by properly trained individuals. Unless otherwise stated in the Documentation, this warranty is limited to one year from date of shipment when the Product is subjected to normal, proper and intended usage. This warranty does not extend to anyone other than the Buyer. Any model or sample furnished to Buyer is merely illustrative of the general type and quality of goods and does not represent that any Product will conform to such model or sample. NO OTHER WARRANTIES, EXPRESS OR IMPLIED, ARE GRANTED INCLUDING WITHOUT LIMITATION, IMPLIED WARRANTIES OF MERCHANTABILITY, FITNESS FOR ANY PARTICULAR PURPOSE, OR NON INFRINGEMENT. BUYER'S EXCLUSIVE REMEDY FOR NON-CONFORMING PRODUCTS DURING THE WARRANTY PERIOD IS LIMITED TO REPAIR, REPLACEMENT OF OR REFUND FOR THE NON-CONFORMING PRODUCT(S) AT SELLER'S SOLE OPTION. THERE IS NO OBLIGATION TO REPAIR, REPLACE OR REFUND FOR PRODUCTS AS THE RESULT OF (I) ACCIDENT, DISASTER OR EVENT OF FORCE MAJEURE, (II) MISUSE, FAULT OR NEGLIGENCE OF OR BY BUYER, (III) USE OF THE PRODUCTS IN A MANNER FOR WHICH THEY WERE NOT DESIGNED, OR (IV) IMPROPER STORAGE AND HANDLING OF THE PRODUCTS. Unless otherwise expressly stated on the Product or in the documentation accompanying the Product, the Product is intended for research only and is not to be used for any other purpose, including without limitation, unauthorized commercial uses, in vitro diagnostic uses, ex vivo or in vivo therapeutic uses, or any type of consumption by or application to human or animals.