

# CEA Monoclonal Antibody (1106)

## Product Details

Size	1 mg
Species Reactivity	Human
Host/Isotype	Mouse / IgG1
Class	Monoclonal
Type	Antibody
Clone	1106
Conjugate	Unconjugated
Immunogen	Purified CEA from pooled tumors
Form	Liquid
Concentration	5 mg/mL
Purification	Protein A
Storage buffer	PBS, pH 7.4
Contains	0.09% sodium azide
Storage conditions	Maintain refrigerated at 2-8°C for up to 6 months. For long term storage store at -20°C
RRID	AB_11152728

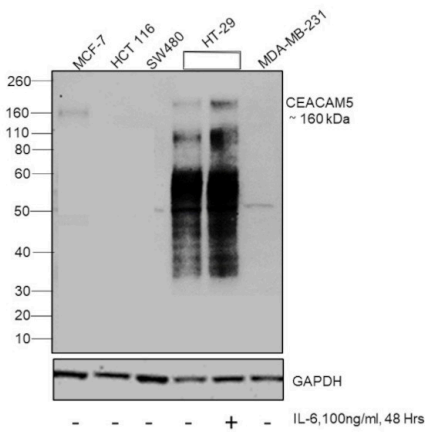
Applications	Tested Dilution	Publications
Western Blot (WB)	1:1,000	-
Immunocytochemistry (ICC/IF)	5-20 µg/mL	-
Flow Cytometry (Flow)	5-20 µg/mL	-
ELISA (ELISA)	Assay-dependent	-
Immunoprecipitation (IP)	Assay-dependent	-
Radioimmune Assays (RIA)	Assay-dependent	-

## Product Specific Information

The predicted MW of CEA is ~77kD, but by Western blot MIC0102 detects CEA with varying degrees of glycosylation at ~77-180kD.

MIC0102 was formerly sold as a Seradyn product.

Product Images For CEA Monoclonal Antibody (1106)



CEA Antibody (MIC0102)

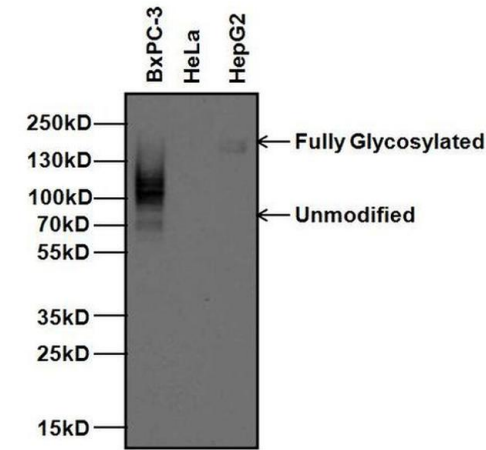
Antibody specificity was demonstrated by detection of differential basal expression of the target across cell lines tested owing to their inherent genetic constitution. Relative expression of Carcinoembryonic antigen-related cell adhesion molecule 5 was observed higher in MCF-7, HT29 as compared to HCT 116, SW480 and MDA-MB-231 using Anti-CEA Monoclonal Antibody (1106) (Product # MIC0102) in Western Blot. {RE}

CEA Antibody (MIC0102) in WB

Western blot was performed using Anti-CEA Monoclonal Antibody (1106) (Product # MIC0102) and a 160 kDa band corresponding to Carcinoembryonic antigen-related cell adhesion molecule 5 was observed across cell lines tested. Membrane enriched extracts (30 µg lysate) of MCF7 (Lane 1), HCT 116 (Lane 2), SW480 (Lane 3), HT-29 (Lane 4), HT-29 treated with IL-6, 100 ng/mL, 48 Hrs. (Lane 5), MDA-MB-231 (Lane 6) were electrophoresed using NuPAGE™ 4-12% Bis-Tris Protein Gel (Product # NP0322BOX). Resolved proteins were then transferred onto a Nitrocellulose membrane (Product # IB23001) by iBlot® 2 Dry Blotting System (Product # IB21001). The blot was probed with the primary antibody (1:1000 Dilution) and detected by chemiluminescence with Goat anti-Mouse IgG (H+L) Superclonal™ Recombinant Secondary Antibody, HRP (Product # A28177, 1:4000 dilution) using the iBright FL 1000 (Product # A32752). Chemiluminescent detection was performed using Novex® ECL Chemiluminescent Substrate Reagent Kit (Product # WP20005).

CEA Antibody (MIC0102) in WB

Western blot analysis of Carcinoembryonic Antigen (CEA) was performed by loading 20 µg of BxPC-3, HeLa, and HepG2 whole cell lysates per well and 5 µL of PageRuler Plus Prestained Protein Ladder (Product # 26619) onto a 4-20% Tris-Glycine polyacrylamide gel. Proteins were transferred to a nitrocellulose membrane using the G2 Blotter (Product # 62288), and blocked with 5% milk in TBST for 1 hour at room temperature. CEA (with varying degrees of glycosylation) was detected at ~77-180 kD using a CEA monoclonal antibody (Product # MIC0102) at a dilution of 1 µg/mL in 5% milk in TBST overnight at 4°C on a rocking platform, followed by a goat anti-mouse IgG HRP secondary antibody (Product # 31430) at a dilution of 1:10,000 for at least 30 minutes at room temperature. Chemiluminescent detection was performed using SuperSignal West Pico substrate (Product # 34080).



View more figures on [thermofisher.cn](https://thermofisher.cn)

For Research Use Only. Not for use in diagnostic procedures. Not for resale without express authorization. Products are warranted to operate or perform substantially in conformance with published Product specifications in effect at the time of sale, as set forth in the Production documentation, specifications and/or accompanying package inserts ("Documentation"). No claim of suitability for use in applications regulated by FDA is made. The warranty provided herein is valid only when used by properly trained individuals. Unless otherwise stated in the Documentation, this warranty is limited to one year from date of shipment when the Product is subjected to normal, proper and intended usage. This warranty does not extend to anyone other than the Buyer. Any model or sample furnished to Buyer is merely illustrative of the general type and quality of goods and does not represent that any Product will conform to such model or sample. NO OTHER WARRANTIES, EXPRESS OR IMPLIED, ARE GRANTED INCLUDING WITHOUT LIMITATION, IMPLIED WARRANTIES OF MERCHANTABILITY, FITNESS FOR ANY PARTICULAR PURPOSE, OR NON INFRINGEMENT. BUYER'S EXCLUSIVE REMEDY FOR NON-CONFORMING PRODUCTS DURING THE WARRANTY PERIOD IS LIMITED TO REPAIR, REPLACEMENT OF OR REFUND FOR THE NON-CONFORMING PRODUCT(S) AT SELLER'S SOLE OPTION. THERE IS NO OBLIGATION TO REPAIR, REPLACE OR REFUND FOR PRODUCTS AS THE RESULT OF (I) ACCIDENT, DISASTER OR EVENT OF FORCE MAJEURE, (II) MISUSE, FAULT OR NEGLIGENCE OF OR BY BUYER, (III) USE OF THE PRODUCTS IN A MANNER FOR WHICH THEY WERE NOT DESIGNED, OR (IV) IMPROPER STORAGE AND HANDLING OF THE PRODUCTS. Unless otherwise expressly stated on the Product or in the documentation accompanying the Product, the Product is intended for research only and is not to be used for any other purpose, including without limitation, unauthorized commercial uses, in vitro diagnostic uses, ex vivo or in vivo therapeutic uses, or any type of consumption by or application to human or animals.