

NF-H Monoclonal Antibody (RNF 402)

Product Details

Size	100 µL
Species Reactivity	Bovine, Dog, Chicken, Guinea pig, Hamster, Human, Mouse, Non-human primate, Sheep, Rabbit, Rat, Xenopus
Host/Isotype	Mouse / IgM
Class	Monoclonal
Type	Antibody
Clone	RNF 402
Conjugate	Unconjugated
Immunogen	Neurofilament preparation of calf brain tissue
Form	Liquid
Concentration	1 mg/mL
Purification	purified
Storage buffer	PBS
Contains	0.09% sodium azide
Storage conditions	Store at 4°C short term. For long term storage, store at -20°C, avoiding freeze/thaw cycles.
RRID	AB_325537

Applications	Tested Dilution	Publications
Western Blot (WB)	1:25-1:250	-
Immunohistochemistry (Paraffin) (IHC (P))	1:10-1:100	-
Immunohistochemistry (Frozen) (IHC (F))	1:10-1:100	-
Immunocytochemistry (ICC/IF)	Assay-dependent	-

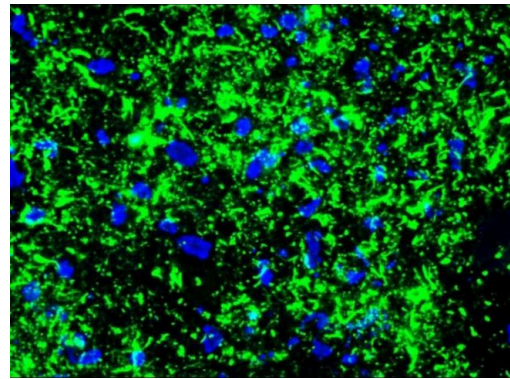
Product Specific Information

OMA1-06116 detects both the phosphorylated and non-phosphorylated forms of the 200 kDa neurofilament from rat, guinea pig, rabbit, dog, hamster, chicken, mouse, cow, monkey, sheep, xenopus and human tissues.

OMA1-06116 has been successfully used in immunohistochemical (frozen & paraffin) and Western blot procedures. By Western blot, this antibody detects a single ~200 kDa protein representing both forms of the 200 kDa neurofilament from rat brain homogenate.

OMA1-06116 antigen is cytoskeletal preparation of calf brain tissue.

Product Images For NF-H Monoclonal Antibody (RNF 402)



NF-H Antibody (OMA1-06116) in IHC (F)
Immunohistochemistry on frozen section of rat brain stained with Neurofilament, Heavy chain monoclonal antibody (Product # OMA1-06116).

For Research Use Only. Not for use in diagnostic procedures. Not for resale without express authorization. Products are warranted to operate or perform substantially in conformance with published Product specifications in effect at the time of sale, as set forth in the Production documentation, specifications and/or accompanying package inserts ("Documentation"). No claim of suitability for use in applications regulated by FDA is made. The warranty provided herein is valid only when used by properly trained individuals. Unless otherwise stated in the Documentation, this warranty is limited to one year from date of shipment when the Product is subjected to normal, proper and intended usage. This warranty does not extend to anyone other than the Buyer. Any model or sample furnished to Buyer is merely illustrative of the general type and quality of goods and does not represent that any Product will conform to such model or sample. NO OTHER WARRANTIES, EXPRESS OR IMPLIED, ARE GRANTED INCLUDING WITHOUT LIMITATION, IMPLIED WARRANTIES OF MERCHANTABILITY, FITNESS FOR ANY PARTICULAR PURPOSE, OR NON-INFRINGEMENT. BUYER'S EXCLUSIVE REMEDY FOR NON-CONFORMING PRODUCTS DURING THE WARRANTY PERIOD IS LIMITED TO REPAIR, REPLACEMENT OF OR REFUND FOR THE NON-CONFORMING PRODUCT(S) AT SELLER'S SOLE OPTION. THERE IS NO OBLIGATION TO REPAIR, REPLACE OR REFUND FOR PRODUCTS AS THE RESULT OF (I) ACCIDENT, DISASTER OR EVENT OF FORCE MAJEURE, (II) MISUSE, FAULT OR NEGLIGENCE OF OR BY BUYER, (III) USE OF THE PRODUCTS IN A MANNER FOR WHICH THEY WERE NOT DESIGNED, OR (IV) IMPROPER STORAGE AND HANDLING OF THE PRODUCTS. Unless otherwise expressly stated on the Product or in the documentation accompanying the Product, the Product is intended for research only and is not to be used for any other purpose, including without limitation, unauthorized commercial uses, in vitro diagnostic uses, ex vivo or in vivo therapeutic uses, or any type of consumption by or application to human or animals.