

SLC7A11 Polyclonal Antibody

Product Details	
Size	100 µL
Species Reactivity	Human, Mouse, Rat
Published Species	Human
Host/Isotype	Rabbit / IgG
Class	Polyclonal
Type	Antibody
Conjugate	Unconjugated
Immunogen	A synthetic peptide made to a region within the N-terminus of the murine XCT protein sequence (between residues 1-50).
Form	Liquid
Concentration	1 mg/mL
Purification	Antigen affinity chromatography
Storage buffer	PBS
Contains	0.02% sodium azide
Storage conditions	Store at 4°C short term. For long term storage, store at -20°C, avoiding freeze/thaw cycles.
RRID	AB_568777

Applications	Tested Dilution	Publications
Western Blot (WB)	0.5-2 µg/mL	-
Immunohistochemistry (Paraffin) (IHC (P))	Assay-Dependent	-
Immunohistochemistry (Frozen) (IHC (F))	1:10-1:500	-
Immunocytochemistry (ICC/IF)	1:100-1:1,000	-
Flow Cytometry (Flow)	1 - 5 µg/mL	1 Publication

Product Specific Information

This antibody is predicted to react with mouse and canine based on 100% sequence homology.

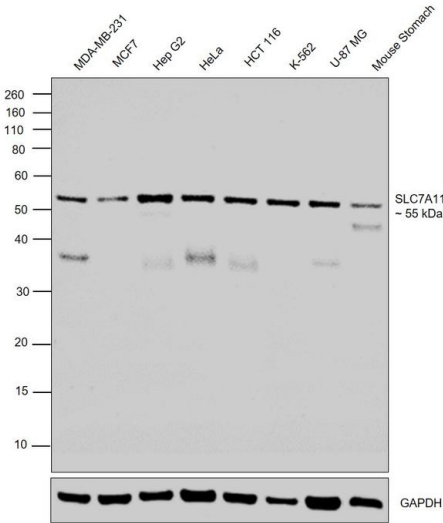
This antibody has 94% sequence homology with rat.

Suggested positive control: human stomach protein, stomach tissue lysate.

Product Images For SLC7A11 Polyclonal Antibody

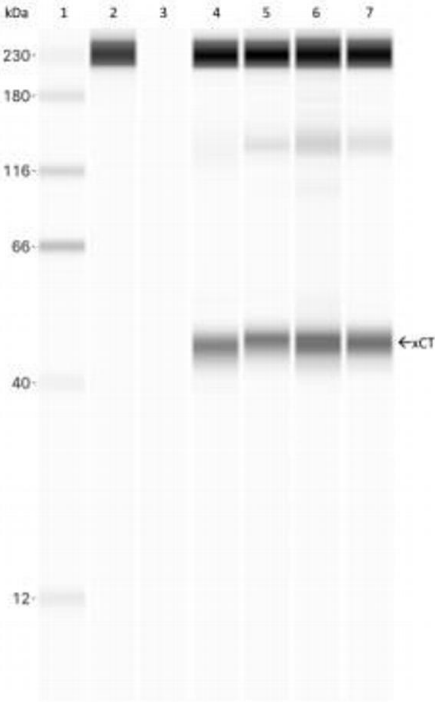
SLC7A11 Antibody (PA1-16775) in WB

Western blot was performed using Anti-SLC7A11 Polyclonal Antibody (Product # PA1-16775) and a 55 kDa band corresponding to SLC7A11 was observed across the cell lines and tissue tested. An uncharacterized band of ~ 36 kDa was also observed in some of the cell lines. Whole cell extracts (30 µg lysate) of MDA-MB-231 (Lane1), MCF7 (Lane 2), Hep G2 (Lane 3), HeLa (Lane 4), HCT 116 (Lane 5), K-562 (Lane 6), U-87MG (Lane 7) and tissue extract (30 µg lysate) of Mouse Stomach (Lane 8) were electrophoresed using Novex® NuPAGE™ 10% Bis-Tris Protein Gel (Product # NP0302BOX). Resolved proteins were then transferred onto a nitrocellulose membrane (Product # IB23001) by iBlot® 2 Dry Blotting System (Product # IB21001). The blot was probed with the primary antibody (1 µg/mL) and detected by chemiluminescence with Goat anti-Rabbit IgG (Heavy Chain), Superclonal™ Recombinant Secondary Antibody, HRP (Product # A27036, 1:4000 dilution), using the iBright FL 1000 (Product # A32752). Chemiluminescent detection was performed using Novex® ECL Chemiluminescent Substrate Reagent Kit (Product # WP20005).



SLC7A11 Antibody (PA1-16775) in WB

Western blot analysis of SLC7A11 in 0.03 mg/mL human brain frontal cortex membrane lysate and human brain lysates. Samples were incubated in SLC7A11 polyclonal antibody (Product # PA1-16775) using a dilution of 100 µg/mL. (1) ladder; (2) no lysate + xCT, 100 µg/mL; (3) human brain frontal cortex membrane lysate, no primary antibody; (4-7) human brain lysates, 0.03 mg/mL, xCT, 100 µg/mL.



Flow Cytometry (1)

Biomedicines

Immunotherapy against the Cystine/Glutamate Antiporter xCT Improves the Efficacy of APR-246 in Preclinical Breast Cancer Models.

"PA1-16775 was used in Flow cytometry/Cell sorting to demonstrate that DNA vaccination against xCT can synergize with APR-246 treatment and enhance its therapeutic effect."

Authors: Barutello G,Di Lorenzo A,Gasparetto A,Galiazzi C,Bolli E,Conti L,Cavallo F

Year
2022

Species
Human

For Research Use Only. Not for use in diagnostic procedures. Not for resale without express authorization. Products are warranted to operate or perform substantially in conformance with published Product specifications in effect at the time of sale, as set forth in the Production documentation, specifications and/or accompanying package inserts ("Documentation"). No claim of suitability for use in applications regulated by FDA is made. The warranty provided herein is valid only when used by properly trained individuals. Unless otherwise stated in the Documentation, this warranty is limited to one year from date of shipment when the Product is subjected to normal, proper and intended usage. This warranty does not extend to anyone other than the Buyer. Any model or sample furnished to Buyer is merely illustrative of the general type and quality of goods and does not represent that any Product will conform to such model or sample. NO OTHER WARRANTIES, EXPRESS OR IMPLIED, ARE GRANTED INCLUDING WITHOUT LIMITATION, IMPLIED WARRANTIES OF MERCHANTABILITY, FITNESS FOR ANY PARTICULAR PURPOSE, OR NON INFRINGEMENT. BUYER'S EXCLUSIVE REMEDY FOR NON-CONFORMING PRODUCTS DURING THE WARRANTY PERIOD IS LIMITED TO REPAIR, REPLACEMENT OF OR REFUND FOR THE NON-CONFORMING PRODUCT(S) AT SELLER'S SOLE OPTION. THERE IS NO OBLIGATION TO REPAIR, REPLACE OR REFUND FOR PRODUCTS AS THE RESULT OF (I) ACCIDENT, DISASTER OR EVENT OF FORCE MAJEURE, (II) MISUSE, FAULT OR NEGLIGENCE OF OR BY BUYER, (III) USE OF THE PRODUCTS IN A MANNER FOR WHICH THEY WERE NOT DESIGNED, OR (IV) IMPROPER STORAGE AND HANDLING OF THE PRODUCTS. Unless otherwise expressly stated on the Product or in the documentation accompanying the Product, the Product is intended for research only and is not to be used for any other purpose, including without limitation, unauthorized commercial uses, in vitro diagnostic uses, ex vivo or in vivo therapeutic uses, or any type of consumption by or application to human or animals.