

# HSL Polyclonal Antibody

Product Details	
Size	50 µL
Species Reactivity	Human, Mouse, Rat
Published Species	Rat
Host/Isotype	Rabbit / IgG
Class	Polyclonal
Type	Antibody
Conjugate	Unconjugated
Immunogen	Fusion protein between amimo acids 699-908 of the rat HSL protein.
Form	Liquid
Concentration	0.25 mg/mL
Purification	IgG fraction
Storage buffer	PBS with 1mg/mL BSA
Contains	0.05% sodium azide
Storage conditions	-20° C, Avoid Freeze/Thaw Cycles
RRID	AB_2135506

Applications	Tested Dilution	Publications
Western Blot (WB)	1:100-1:2,000	1 Publication

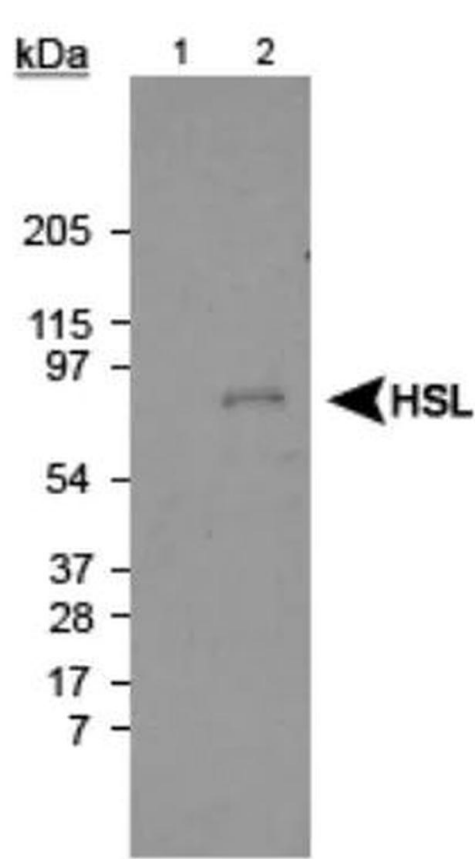
## Product Specific Information

PA1-16966 is specific for the ~84 kDa Hormone-Sensitive Lipase protein.

A non-specific band may also be detected at ~89 kDa.

Bands at ~102, 113, and 127 kDa may also be seen in the testis of sexually immature rats.Suggested positive control: human adipose protein.

Product Images For HSL Polyclonal Antibody



**HSL Antibody (PA1-16966) in WB**  
Western blot analysis of HSL in 10 µg liver extract and fat extract. Samples were incubated in HSL polyclonal antibody (Product # PA1-16966). Lane 1: Liver extract (negative control) Lane 2: Fat extract (10 µg) (positive sample).

1 Reference

Western Blot (1)

The Journal of nutritional biochemistry		Year
ATGL and HSL are not coordinately regulated in response to fuel partitioning in fasted rats.		2011
"PA1-16966 was used in western blot to study the regulation of adipose triglyceride lipase and hormone sensitive lipase during prolonged starvation."		Species
Authors: Bertile F,Raclot T		Rat

For Research Use Only. Not for use in diagnostic procedures. Not for resale without express authorization. Products are warranted to operate or perform substantially in conformance with published Product specifications in effect at the time of sale, as set forth in the Production documentation, specifications and/or accompanying package inserts ("Documentation"). No claim of suitability for use in applications regulated by FDA is made. The warranty provided herein is valid only when used by properly trained individuals. Unless otherwise stated in the Documentation, this warranty is limited to one year from date of shipment when the Product is subjected to normal, proper and intended usage. This warranty does not extend to anyone other than the Buyer. Any model or sample furnished to Buyer is merely illustrative of the general type and quality of goods and does not represent that any Product will conform to such model or sample. NO OTHER WARRANTIES, EXPRESS OR IMPLIED, ARE GRANTED INCLUDING WITHOUT LIMITATION, IMPLIED WARRANTIES OF MERCHANTABILITY, FITNESS FOR ANY PARTICULAR PURPOSE, OR NON INFRINGEMENT. BUYER'S EXCLUSIVE REMEDY FOR NON-CONFORMING PRODUCTS DURING THE WARRANTY PERIOD IS LIMITED TO REPAIR, REPLACEMENT OF OR REFUND FOR THE NON-CONFORMING PRODUCT(S) AT SELLER'S SOLE OPTION. THERE IS NO OBLIGATION TO REPAIR, REPLACE OR REFUND FOR PRODUCTS AS THE RESULT OF (I) ACCIDENT, DISASTER OR EVENT OF FORCE MAJEURE, (II) MISUSE, FAULT OR NEGLIGENCE OF OR BY BUYER, (III) USE OF THE PRODUCTS IN A MANNER FOR WHICH THEY WERE NOT DESIGNED, OR (IV) IMPROPER STORAGE AND HANDLING OF THE PRODUCTS. Unless otherwise expressly stated on the Product or in the documentation accompanying the Product, the Product is intended for research only and is not to be used for any other purpose, including without limitation, unauthorized commercial uses, in vitro diagnostic uses, ex vivo or in vivo therapeutic uses, or any type of consumption by or application to human or animals.