

# SAT1 Polyclonal Antibody

Product Details	
Size	100 µL
Species Reactivity	Bovine, Chicken, Goat, Human, Mouse, Pig, Rat, Xenopus
Published Species	Human
Host/Isotype	Rabbit / IgG
Class	Polyclonal
Type	Antibody
Conjugate	Unconjugated
Immunogen	Synthetic peptide corresponding to residues 100-171 of human SAT1.
Form	Liquid
Concentration	1 mg/mL
Purification	Antigen affinity chromatography
Storage buffer	PBS
Contains	0.02% sodium azide
Storage conditions	Store at 4°C short term. For long term storage, store at -20°C, avoiding freeze/thaw cycles.
RRID	AB_2184314

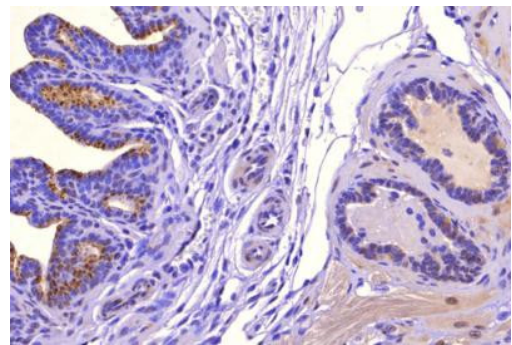
Applications	Tested Dilution	Publications
Western Blot (WB)	1:500-1:1,000	1 Publication
Immunohistochemistry (Paraffin) (IHC (P))	1:100	-

## Product Specific Information

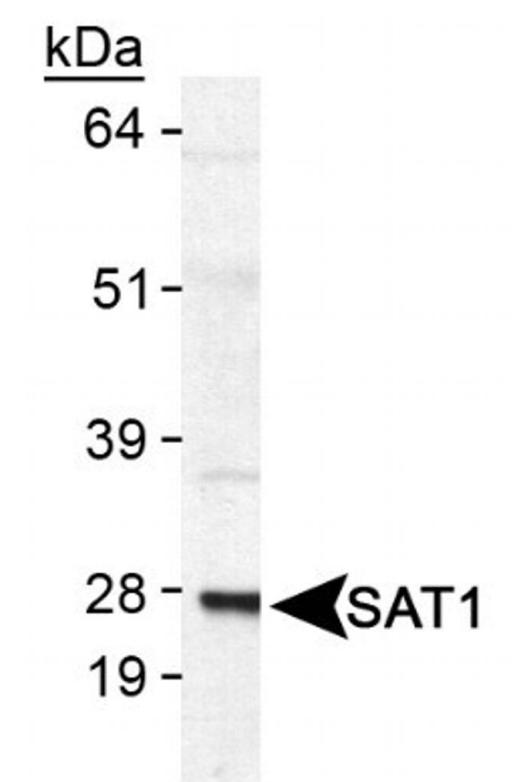
Prior to immunostaining paraffin tissues, antigen retrieval with sodium citrate buffer (pH 6.0) is recommended.

Suggested positive control: antigen standard for SAT1 (transient overexpression lysate).

Product Images For SAT1 Polyclonal Antibody



**SAT1 Antibody (PA1-16992) in IHC (P)**  
Immunohistochemical analysis of SAT1 in mouse seminal vesical (left) and prostate (right). Samples were incubated in SAT1 polyclonal antibody (Product # PA1-16992). Analysis using DAB with hematoxylin counterstain.



**SAT1 Antibody (PA1-16992) in WB**  
Western blot analysis of SAT1 in human SAT1 transfected lysate. Sample was incubated in SAT1 polyclonal antibody (Product # PA1-16992).

1 Reference

Western Blot (1)

<p>The Journal of investigative dermatology</p> <p><b>The Polyamine Putrescine Promotes Human Epidermal Melanogenesis.</b></p> <p>"PA1-16992 was used in Western Blotting to report that the polyamine putrescine can promote pigmentation in human skin and epidermal melanocytes through induction of tyrosinase which is rate-limiting for the synthesis of melanin."</p> <p>Authors: Sridharan A,Shi M,Leo VI,Subramaniam N,Lim TC,Uemura T,Igarashi K,Tien Guan ST,Tan NS,Vardy LA</p>	<p><b>Year</b></p> <p>2020</p> <p><b>Species</b></p> <p>Human</p>
---	---

For Research Use Only. Not for use in diagnostic procedures. Not for resale without express authorization. Products are warranted to operate or perform substantially in conformance with published Product specifications in effect at the time of sale, as set forth in the Production documentation, specifications and/or accompanying package inserts ("Documentation"). No claim of suitability for use in applications regulated by FDA is made. The warranty provided herein is valid only when used by properly trained individuals. Unless otherwise stated in the Documentation, this warranty is limited to one year from date of shipment when the Product is subjected to normal, proper and intended usage. This warranty does not extend to anyone other than the Buyer. Any model or sample furnished to Buyer is merely illustrative of the general type and quality of goods and does not represent that any Product will conform to such model or sample. NO OTHER WARRANTIES, EXPRESS OR IMPLIED, ARE GRANTED INCLUDING WITHOUT LIMITATION, IMPLIED WARRANTIES OF MERCHANTABILITY, FITNESS FOR ANY PARTICULAR PURPOSE, OR NON-INFRINGEMENT. BUYER'S EXCLUSIVE REMEDY FOR NON-CONFORMING PRODUCTS DURING THE WARRANTY PERIOD IS LIMITED TO REPAIR, REPLACEMENT OF OR REFUND FOR THE NON-CONFORMING PRODUCT(S) AT SELLER'S SOLE OPTION. THERE IS NO OBLIGATION TO REPAIR, REPLACE OR REFUND FOR PRODUCTS AS THE RESULT OF (i) ACCIDENT, DISASTER OR EVENT OF FORCE MAJEURE, (ii) MISUSE, FAULT OR NEGLIGENCE OF OR BY BUYER, (iii) USE OF THE PRODUCTS IN A MANNER FOR WHICH THEY WERE NOT DESIGNED, OR (iv) IMPROPER STORAGE AND HANDLING OF THE PRODUCTS. Unless otherwise expressly stated on the Product or in the documentation accompanying the Product, the Product is intended for research only and is not to be used for any other purpose, including without limitation, unauthorized commercial uses, in vitro diagnostic uses, ex vivo or in vivo therapeutic uses, or any type of consumption by or application to human or animals.