

# TLR2 Polyclonal Antibody

Product Details	
Size	100 µg
Species Reactivity	Human
Host/Isotype	Goat / IgG
Class	Polyclonal
Type	Antibody
Conjugate	Unconjugated
Immunogen	Synthetic peptide: CLEIDASDLQSYEPKSLKSIQNVSHLI, corresponding to amino acids 179-204 of Human TLR2.
Form	Liquid
Concentration	1 mg/mL
Purification	Antigen affinity chromatography
Storage buffer	PBS with 1mg/mL BSA
Contains	0.1% sodium azide
Storage conditions	Store at 4°C short term. For long term storage, store at -20°C, avoiding freeze/thaw cycles.
RRID	AB_561722

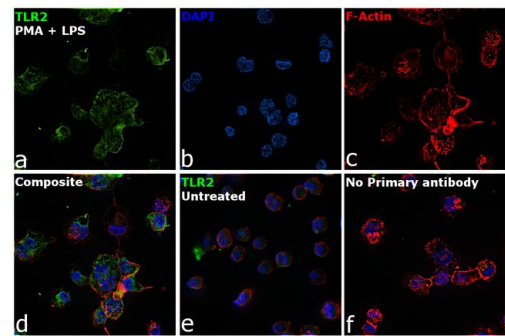
Applications	Tested Dilution	Publications
Western Blot (WB)	1:1,000	-
Immunohistochemistry (Paraffin) (IHC (P))	1:250	-
Immunocytochemistry (ICC/IF)	1:100-1:500	-
ELISA (ELISA)	1:37,500	-

## Product Specific Information

Recommended positive controls: Human spleen sections or human peripheral blood.

Store product as a concentrated solution. Centrifuge briefly prior to opening the vial.

Product Images For TLR2 Polyclonal Antibody

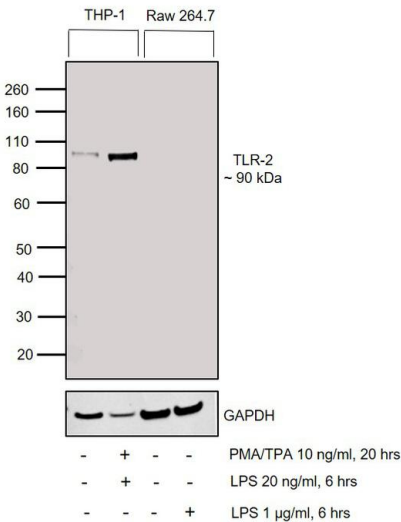


TLR2 Antibody (PA1-21611)

Altered expression of target protein upon cell treatment demonstrates antibody specificity. Immunofluorescence analysis of TLR2 using TLR2 Goat Polyclonal Antibody (Product # PA1-21611) shows increased expression of TLR2 protein in THP-1 cell line upon treatment with PMA and LPS in membrane lipid rafts. {TM}

TLR2 Antibody (PA1-21611) in WB

Western blot was performed using Anti-TLR2 Polyclonal Antibody (Product # PA1-21611) and a 90 kDa band corresponding to TLR2 was observed in human THP-1 cell line tested and not in mouse Raw 264.7 cell line. Membrane enriched extracts (30 µg lysate) of THP-1 (Lane 1), THP-1 treated with 10 ng/mL PMA for 20 hours and 20 ng/mL LPS for 6 hours (Lane 2), Raw 264.7 (Lane 3) and Raw 264.7 treated with 1 µg/mL LPS for 6 hours (Lane 4) were electrophoresed using Novex® NuPAGE® 4-12% Bis-Tris Protein Gel (Product # NP0322BOX). Resolved proteins were then transferred onto a nitrocellulose membrane (Product # IB23001) by iBlot® 2 Dry Blotting System (Product # IB21001). The blot was probed with the primary antibody (1:1000 dilution) and detected by chemiluminescence with Rabbit anti-Goat IgG Heavy Chain Superclonal™ Recombinant Secondary Antibody, HRP (Product # A27014, 1:4000 dilution) using the iBright FL 1000 (Product # A32752). Chemiluminescent detection was performed using Novex® ECL Chemiluminescent Substrate Reagent Kit (Product # WP20005).



TLR2 Antibody (PA1-21611) in ICC/IF

Immunofluorescence analysis of TLR2 was performed using THP-1 cells and THP-1 treated with PMA (10 ng/mL, 20 hours) and LPS (20 ng/mL, 6 hours). The cells were fixed with 4% paraformaldehyde for 10 minutes and blocked with 2% BSA for 1 hour at room temperature. The cells were labeled with TLR2 Polyclonal Antibody (Product # PA1-21611) at 1:100 dilution in 0.1% BSA and incubated overnight at 4 degree and then labeled with Rabbit anti-Goat IgG (H+L) Cross-Adsorbed Secondary Antibody, Alexa Fluor 488 (Product # A-11078) at a dilution of 1:2000 for 45 minutes at room temperature (Panel a: green) in THP-1 treated cells. Nuclei (Panel b: blue) were stained with ProLong™ Diamond Antifade Mountant with DAPI (Product # P36962). F-actin (Panel c: red) was stained with Rhodamine Phalloidin (Product # R415, 1:300). Panel d represents the merged image of THP-1 treated cells, which shows higher expression for TLR2 protein showing localization in lipid rafts in membrane. Panel e represents the merged image of THP-1 cells, that shows lower expression for TLR2 protein. Panel f represents control cells with no primary antibody to assess background. The images were captured at 60X magnification.

View more figures on [thermofisher.cn](http://thermofisher.cn)

For Research Use Only. Not for use in diagnostic procedures. Not for resale without express authorization. Products are warranted to operate or perform substantially in conformance with published Product specifications in effect at the time of sale, as set forth in the Production documentation, specifications and/or accompanying package inserts ("Documentation"). No claim of suitability for use in applications regulated by FDA is made. The warranty provided herein is valid only when used by properly trained individuals. Unless otherwise stated in the Documentation, this warranty is limited to one year from date of shipment when the Product is subjected to normal, proper and intended usage. This warranty does not extend to anyone other than the Buyer. Any model or sample furnished to Buyer is merely illustrative of the general type and quality of goods and does not represent that any Product will conform to such model or sample. NO OTHER WARRANTIES, EXPRESS OR IMPLIED, ARE GRANTED INCLUDING WITHOUT LIMITATION, IMPLIED WARRANTIES OF MERCHANTABILITY, FITNESS FOR ANY PARTICULAR PURPOSE, OR NON-INFRINGEMENT. BUYER'S EXCLUSIVE REMEDY FOR NON-CONFORMING PRODUCTS DURING THE WARRANTY PERIOD IS LIMITED TO REPAIR, REPLACEMENT OF OR REFUND FOR THE NON-CONFORMING PRODUCT(S) AT SELLER'S SOLE OPTION. THERE IS NO OBLIGATION TO REPAIR, REPLACE OR REFUND FOR PRODUCTS AS THE RESULT OF (I) ACCIDENT, DISASTER OR EVENT OF FORCE MAJEURE, (II) MISUSE, FAULT OR NEGLIGENCE OF OR BY BUYER, (III) USE OF THE PRODUCTS IN A MANNER FOR WHICH THEY WERE NOT DESIGNED, OR (IV) IMPROPER STORAGE AND HANDLING OF THE PRODUCTS. Unless otherwise expressly stated on the Product or in the documentation accompanying the Product, the Product is intended for research only and is not to be used for any other purpose, including without limitation, unauthorized commercial uses, in vitro diagnostic uses, ex vivo or in vivo therapeutic uses, or any type of consumption by or application to human or animals.