

CDK8 Polyclonal Antibody

Product Details	
Size	500 µL
Species Reactivity	Human, Mouse, Rat
Published Species	Human
Host/Isotype	Rabbit / IgG
Class	Polyclonal
Type	Antibody
Conjugate	Unconjugated
Immunogen	Synthetic peptide: C-SQQPPQYSHQTHRY, corresponding to amino acids 451-464 of Human Cdk8.
Form	Liquid
Concentration	0.2 mg/mL
Purification	Protein A
Storage buffer	10mM PBS, pH 7.4, with 0.2% BSA
Contains	0.09% sodium azide
Storage conditions	4° C, do not freeze
RRID	AB_2291488

Applications	Tested Dilution	Publications
Western Blot (WB)	1-2 µg/mL	-
Immunocytochemistry (ICC/IF)	Assay-dependent	1 Publication
Immunoprecipitation (IP)	10 µg/mg of lysate	-
ChIP assay (ChIP)	1-3 µL	1 Publication
in situ PLA (PLA)	-	1 Publication

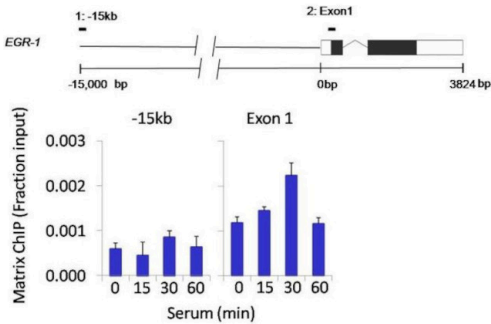
Product Specific Information

Recommended positive controls: HT29 cells.

Product Images For CDK8 Polyclonal Antibody

CDK8 Antibody (PA1-21780) in ChIP

Chromatin immunoprecipitation analysis of Cdk8 was performed using cross-linked chromatin from 1 x 10⁶ HCT116 colon carcinoma cells treated with serum for 0, 15, 30, and 60 minutes. Immunoprecipitation was performed using a multiplex microplate Matrix ChIP assay (see reference for Matrix ChIP protocol: <http://www.ncbi.nlm.nih.gov/pubmed/22098709>) with 1.0 µL/100 µL well volume of a Cdk8 polyclonal antibody (Product # PA1-21780). Chromatin aliquots from ~1 x 10⁵ cells were used per ChIP pull-down. Quantitative PCR data were done in quadruplicate using 1 µL of eluted DNA in 2 µL SYBR real-time PCR reactions containing primers to amplify -15kb upstream of the Egr1 gene or exon-1 of Egr1. PCR calibration curves were generated for each primer pair from a dilution series of sheared total genomic DNA. Quantitation of immunoprecipitated chromatin is presented as signal relative to the total amount of input chromatin. Results represent the mean +/- SEM for three experiments. A schematic representation of the Egr-1 locus is shown above the data where boxes represent exons (black boxes = translated regions, white boxes = untranslated regions); the zigzag line represents an intron; and the straight line represents upstream sequence. Regions amplified by Egr-1 primers are represented by black bars. Data courtesy of the Innovators Program.



View more figures on thermofisher.cn

3 References

Immunocytochemistry (1)

Cell reports	Year 2020
CDK8 Fine-Tunes IL-6 Transcriptional Activities by Limiting STAT3 Resident Time at the Gene Loci.	Species Human
"PA1-21780 was used in Proximity Ligation Assay (PLA) to investigate the ability of the cytokine CDK8 to regulate the immune response using interleukin-6 as a model system."	
Authors: Martinez-Fabregas J,Wang L,Pohler E,Cozzani A,Wilmes S,Kazemian M,Mitra S,Moraga I	

ChIP assay (1)

eLife	Year 2016
Set1/COMPASS and Mediator are repurposed to promote epigenetic transcriptional memory.	Species Human
"Published figure using CDK8 polyclonal antibody (Product # PA1-21780) in ChIP assay"	
Authors: D'Urso A,Takahashi YH,Xiong B,Marone J,Coukos R,Randise-Hinchliff C,Wang JP,Shilatifard A,Brickner JH	

in situ PLA (1)

Cell reports	Year 2020
CDK8 Fine-Tunes IL-6 Transcriptional Activities by Limiting STAT3 Resident Time at the Gene Loci.	Species Human
"PA1-21780 was used in Proximity Ligation Assay (PLA) to investigate the ability of the cytokine CDK8 to regulate the immune response using interleukin-6 as a model system."	
Authors: Martinez-Fabregas J,Wang L,Pohler E,Cozzani A,Wilmes S,Kazemian M,Mitra S,Moraga I	

For Research Use Only. Not for use in diagnostic procedures. Not for resale without express authorization. Products are warranted to operate or perform substantially in conformance with published Product specifications in effect at the time of sale, as set forth in the Production documentation, specifications and/or accompanying package inserts ("Documentation"). No claim of suitability for use in applications regulated by FDA is made. The warranty provided herein is valid only when used by properly trained individuals. Unless otherwise stated in the Documentation, this warranty is limited to one year from date of shipment when the Product is subjected to normal, proper and intended usage. This warranty does not extend to anyone other than the Buyer. Any model or sample furnished to Buyer is merely illustrative of the general type and quality of goods and does not represent that any Product will conform to such model or sample. NO OTHER WARRANTIES, EXPRESS OR IMPLIED, ARE GRANTED INCLUDING WITHOUT LIMITATION, IMPLIED WARRANTIES OF MERCHANTABILITY, FITNESS FOR ANY PARTICULAR PURPOSE, OR NON INFRINGEMENT. BUYER'S EXCLUSIVE REMEDY FOR NON-CONFORMING PRODUCTS DURING THE WARRANTY PERIOD IS LIMITED TO REPAIR, REPLACEMENT OF OR REFUND FOR THE NON-CONFORMING PRODUCT(S) AT SELLER'S SOLE OPTION. THERE IS NO OBLIGATION TO REPAIR, REPLACE OR REFUND FOR PRODUCTS AS THE RESULT OF (I) ACCIDENT, DISASTER OR EVENT OF FORCE MAJEURE, (II) MISUSE, FAULT OR NEGLIGENCE OF OR BY BUYER, (III) USE OF THE PRODUCTS IN A MANNER FOR WHICH THEY WERE NOT DESIGNED, OR (IV) IMPROPER STORAGE AND HANDLING OF THE PRODUCTS. Unless otherwise expressly stated on the Product or in the documentation accompanying the Product, the Product is intended for research only and is not to be used for any other purpose, including without limitation, unauthorized commercial uses, in vitro diagnostic uses, ex vivo or in vivo therapeutic uses, or any type of consumption by or application to human or animals.