

Phospho-IFNAR1 (Ser535, Ser539) Polyclonal Antibody

Product Details	
Size	100 µL
Species Reactivity	Human
Host/Isotype	Rabbit / IgG
Class	Polyclonal
Type	Antibody
Conjugate	Unconjugated
Immunogen	Synthetic phospho-peptide corresponding to amino acid residues surrounding Ser535/539 of human IFNAR1 conjugated to KLH
Form	Liquid
Purification	Affinity chromatography
Storage buffer	0.01M HEPES, pH 7.5, with 0.15M NaCl, 100µg/mL BSA, 50% glycerol
Contains	no preservative
Storage conditions	-20° C, Avoid Freeze/Thaw Cycles
RRID	AB_2264542

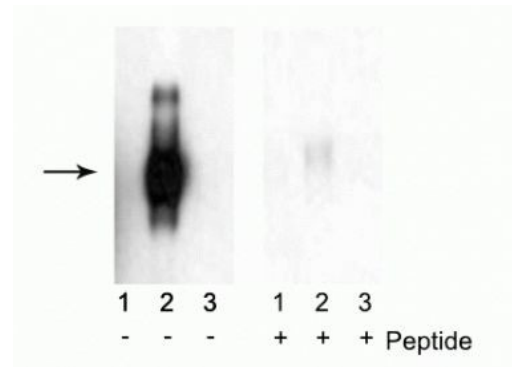
Applications	Tested Dilution	Publications
Western Blot (WB)	1:1,000	-

Product Specific Information

This antibody is predicted to react with bovine, canine, mouse, non-human primate and sheep based on 100% sequence homology.

It is specific for IFNAR1 protein phosphorylated at Ser535,539 in Western blots of human brain extracts.

Product Images For Phospho-IFNAR1 (Ser535, Ser539) Polyclonal Antibody



Phospho-IFNAR1 (Ser535, Ser539) Antibody (PA1-4627) in WB
Western blot of IFNAR1 from HEK 293 cells transfected with Mock (Lane 1), IFNAR1 WT (Lane 2), and IFNAR1 (S535A, S539A) mutants (Lane 3) . Specific immunolabeling of bands from ~110 kDa to ~130 kDa corresponding to Phospho-IFNAR1, (Ser535, Ser539) polyclonal antibody (Product # PA1-4627) is shown in the first blot (left), as the immunolabeling is absent in IFNAR1 Ser535 and Ser539 mutants (Lane 3). The specific immunolabeling is blocked by the phosphopeptide (+) used as the antigen in the second blot (right).

For Research Use Only. Not for use in diagnostic procedures. Not for resale without express authorization. Products are warranted to operate or perform substantially in conformance with published Product specifications in effect at the time of sale, as set forth in the Production documentation, specifications and/or accompanying package inserts ("Documentation"). No claim of suitability for use in applications regulated by FDA is made. The warranty provided herein is valid only when used by properly trained individuals. Unless otherwise stated in the Documentation, this warranty is limited to one year from date of shipment when the Product is subjected to normal, proper and intended usage. This warranty does not extend to anyone other than the Buyer. Any model or sample furnished to Buyer is merely illustrative of the general type and quality of goods and does not represent that any Product will conform to such model or sample. NO OTHER WARRANTIES, EXPRESS OR IMPLIED, ARE GRANTED INCLUDING WITHOUT LIMITATION, IMPLIED WARRANTIES OF MERCHANTABILITY, FITNESS FOR ANY PARTICULAR PURPOSE, OR NON INFRINGEMENT. BUYER'S EXCLUSIVE REMEDY FOR NON-CONFORMING PRODUCTS DURING THE WARRANTY PERIOD IS LIMITED TO REPAIR, REPLACEMENT OF OR REFUND FOR THE NON-CONFORMING PRODUCT(S) AT SELLER'S SOLE OPTION. THERE IS NO OBLIGATION TO REPAIR, REPLACE OR REFUND FOR PRODUCTS AS THE RESULT OF (I) ACCIDENT, DISASTER OR EVENT OF FORCE MAJEURE, (II) MISUSE, FAULT OR NEGLIGENCE OF OR BY BUYER, (III) USE OF THE PRODUCTS IN A MANNER FOR WHICH THEY WERE NOT DESIGNED, OR (IV) IMPROPER STORAGE AND HANDLING OF THE PRODUCTS. Unless otherwise expressly stated on the Product or in the documentation accompanying the Product, the Product is intended for research only and is not to be used for any other purpose, including without limitation, unauthorized commercial uses, in vitro diagnostic uses, ex vivo or in vivo therapeutic uses, or any type of consumption by or application to human or animals.