

# C1D Polyclonal Antibody

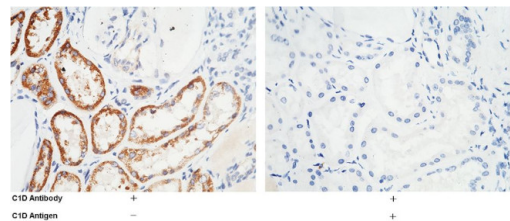
Product Details	
Size	100 µL
Species Reactivity	Human
Host/Isotype	Rabbit / IgG
Class	Polyclonal
Type	Antibody
Conjugate	Unconjugated
Immunogen	Recombinant Human C1D protein
Form	Liquid
Concentration	1 mg/mL
Purification	Antigen affinity chromatography, Protein A
Storage buffer	PBS
Contains	no preservative
Storage conditions	Store at 4°C short term. For long term storage, store at -20°C, avoiding freeze/thaw cycles.
RRID	AB_2866874

Applications	Tested Dilution	Publications
Western Blot (WB)	1:500-1:2,000	-
Immunohistochemistry (Paraffin) (IHC (P))	1:500-1:2,000	-
ELISA (ELISA)	1:5,000-1:10,000	-
Immunoprecipitation (IP)	4-6 µL/mg of lysate	-

## Product Specific Information

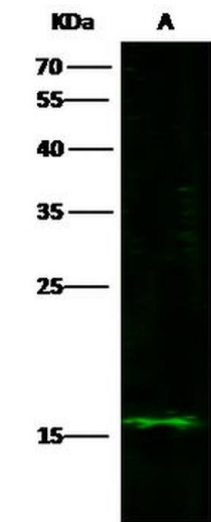
This product can be used in direct ELISA.

Product Images For C1D Polyclonal Antibody



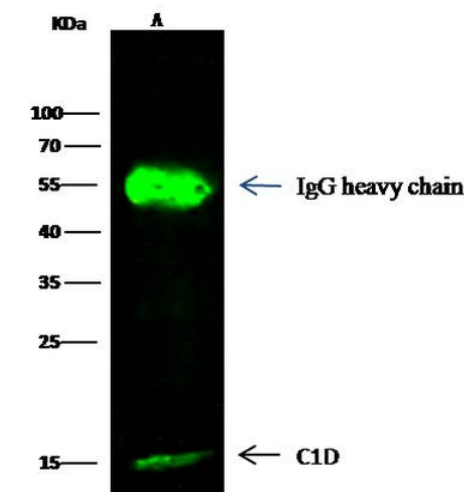
C1D Antibody (PA5-112138) in IHC (P)

Immunohistochemistry analysis of C1D in formalin-fixed paraffin embedded sections human kidney tissue sections using C1D Polyclonal Antibody (Product # PA5-112138) at a dilution of 1:1000. The left panel: tissue incubated with primary antibody; The right panel: tissue incubated with the mixture of primary antibody and antigen (recombinant protein).



C1D Antibody (PA5-112138) in WB

Western Blot analysis of C1D using C1D Polyclonal Antibody (Product # PA5-112138) at a dilution of 1:500. Lane A: HeLa whole cell lysate, (Lysates/proteins at 30 µg per lane). The secondary antibody used was a Goat Anti-Rabbit IgG H&L (Dylight800) at 1:10,000 dilution. Developed using the Odyssey technique and performed under reducing conditions. Predicted band size: 16 kDa. Observed band size: 15 kDa.



C1D Antibody (PA5-112138) in IP

Immunoprecipitation of C1D was performed on (Lane A) 0.5 mg HeLa whole cell lysate using 2 µL of C1D Polyclonal Antibody (Product # PA5-112138) at a dilution of 1:100, and 15 µL of 50 % Protein G agarose. A Dylight 800-labeled antibody to rabbit IgG (H+L) was used as a secondary antibody at a dilution of 1: 5000. Developed using the odssey technique and performed under reducing conditions. Predicted band size: 15 kDa. Observed band size: 15 kDa.

For Research Use Only. Not for use in diagnostic procedures. Not for resale without express authorization. Products are warranted to operate or perform substantially in conformance with published Product specifications in effect at the time of sale, as set forth in the Production documentation, specifications and/or accompanying package inserts ("Documentation"). No claim of suitability for use in applications regulated by FDA is made. The warranty provided herein is valid only when used by properly trained individuals. Unless otherwise stated in the Documentation, this warranty is limited to one year from date of shipment when the Product is subjected to normal, proper and intended usage. This warranty does not extend to anyone other than the Buyer. Any model or sample furnished to Buyer is merely illustrative of the general type and quality of goods and does not represent that any Product will conform to such model or sample. NO OTHER WARRANTIES, EXPRESS OR IMPLIED, ARE GRANTED INCLUDING WITHOUT LIMITATION, IMPLIED WARRANTIES OF MERCHANTABILITY, FITNESS FOR ANY PARTICULAR PURPOSE, OR NON INFRINGEMENT. BUYER'S EXCLUSIVE REMEDY FOR NON-CONFORMING PRODUCTS DURING THE WARRANTY PERIOD IS LIMITED TO REPAIR, REPLACEMENT OF OR REFUND FOR THE NON-CONFORMING PRODUCT(S) AT SELLER'S SOLE OPTION. THERE IS NO OBLIGATION TO REPAIR, REPLACE OR REFUND FOR PRODUCTS AS THE RESULT OF (I) ACCIDENT, DISASTER OR EVENT OF FORCE MAJEURE, (II) MISUSE, FAULT OR NEGLIGENCE OF OR BY BUYER, (III) USE OF THE PRODUCTS IN A MANNER FOR WHICH THEY WERE NOT DESIGNED, OR (IV) IMPROPER STORAGE AND HANDLING OF THE PRODUCTS. Unless otherwise expressly stated on the Product or in the documentation accompanying the Product, the Product is intended for research only and is not to be used for any other purpose, including without limitation, unauthorized commercial uses, in vitro diagnostic uses, ex vivo or in vivo therapeutic uses, or any type of consumption by or application to human or animals.