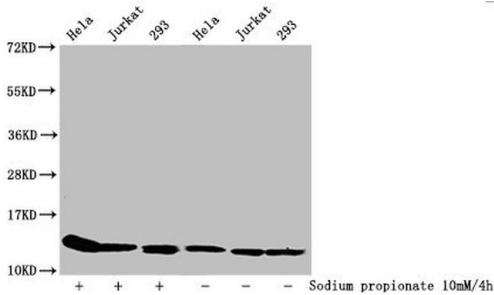


# H4K31pr Polyclonal Antibody

Product Details	
Size	100 µL
Species Reactivity	Human
Host/Isotype	Rabbit / IgG
Class	Polyclonal
Type	Antibody
Conjugate	Unconjugated
Immunogen	Peptide sequence around site of Propionyl-Lys (31) derived from Human Histone H4
Form	Liquid
Concentration	0.15 mg/mL
Purification	Antigen affinity chromatography
Storage buffer	PBS, pH 7.4, with 50% glycerol
Contains	0.03% ProClin 300
Storage conditions	-20°C or -80°C if preferred
RRID	AB_2867296

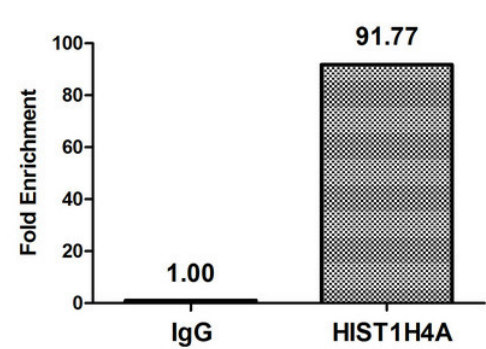
Applications	Tested Dilution	Publications
Western Blot (WB)	1:500-1:2,000	-
ELISA (ELISA)	Assay-dependent	-
ChIP assay (ChIP)	Assay-dependent	-

Product Images For H4K31pr Polyclonal Antibody



H4K31pr Antibody (PA5-112561) in WB

Western Blot analysis of H4K31pr in multiple sample types using a H4K31pr polyclonal antibody (Product # PA5-112561) at a dilution of 1:1000. A goat anti rabbit polyclonal secondary antibody was used at a dilution of 1:40,000. Sample types that were tested include: HeLa whole cell lysate, Jurkat whole cell lysate, 293 whole cell lysate; Untreated (-) or treated (+) with 10mM Sodium propionate for 4h .



H4K31pr Antibody (PA5-112561) in ChIP

Chromatin Immunoprecipitation analysis of H4K31pr in 4\*10^6 HeLa cells using a H4K31pr polyclonal antibody (Product #PA5-112561). HeLa cells were treated with Micrococcal Nuclease, sonicated, and immunoprecipitated with 5 µg anti-HIST1H4A or a control normal rabbit IgG. The resulting ChIP DNA was quantified using real-time PCR with primers against the beta-Globin promoter.

For Research Use Only. Not for use in diagnostic procedures. Not for resale without express authorization. Products are warranted to operate or perform substantially in conformance with published Product specifications in effect at the time of sale, as set forth in the Production documentation, specifications and/or accompanying package inserts ("Documentation"). No claim of suitability for use in applications regulated by FDA is made. The warranty provided herein is valid only when used by properly trained individuals. Unless otherwise stated in the Documentation, this warranty is limited to one year from date of shipment when the Product is subjected to normal, proper and intended usage. This warranty does not extend to anyone other than the Buyer. Any model or sample furnished to Buyer is merely illustrative of the general type and quality of goods and does not represent that any Product will conform to such model or sample. NO OTHER WARRANTIES, EXPRESS OR IMPLIED, ARE GRANTED INCLUDING WITHOUT LIMITATION, IMPLIED WARRANTIES OF MERCHANTABILITY, FITNESS FOR ANY PARTICULAR PURPOSE, OR NON-INFRINGEMENT. BUYER'S EXCLUSIVE REMEDY FOR NON-CONFORMING PRODUCTS DURING THE WARRANTY PERIOD IS LIMITED TO REPAIR, REPLACEMENT OF OR REFUND FOR THE NON-CONFORMING PRODUCT(S) AT SELLER'S SOLE OPTION. THERE IS NO OBLIGATION TO REPAIR, REPLACE OR REFUND FOR PRODUCTS AS THE RESULT OF (i) ACCIDENT, DISASTER OR EVENT OF FORCE MAJEURE, (ii) MISUSE, FAULT OR NEGLIGENCE OF OR BY BUYER, (iii) USE OF THE PRODUCTS IN A MANNER FOR WHICH THEY WERE NOT DESIGNED, OR (iv) IMPROPER STORAGE AND HANDLING OF THE PRODUCTS. Unless otherwise expressly stated on the Product or in the documentation accompanying the Product, the Product is intended for research only and is not to be used for any other purpose, including without limitation, unauthorized commercial uses, in vitro diagnostic uses, ex vivo or in vivo therapeutic uses, or any type of consumption by or application to human or animals.