

# KLHL3 Polyclonal Antibody

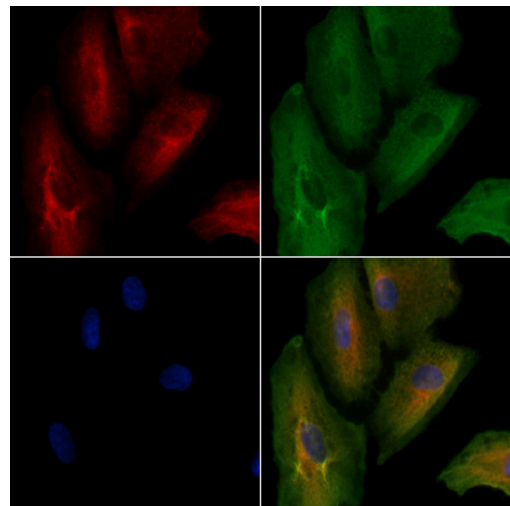
| Product Details    |  |
|--------------------|--|
| Size               | 100 µL   |
| Species Reactivity | Human, Mouse   |
| Host/Isotype       | Rabbit / IgG   |
| Class              | Polyclonal   |
| Type               | Antibody   |
| Conjugate          | Unconjugated   |
| Immunogen          | A synthesized peptide derived from human KLHL3(Accession Q9UH77), corresponding to amino acid residues M1-R44. |
| Form               | Liquid   |
| Concentration      | 1 mg/mL  |
| Purification       | Affinity chromatography  |
| Storage buffer     | PBS, pH 7.4, with 50% glycerol   |
| Contains           | 0.02% sodium azide   |
| Storage conditions | -20°C  |
| RRID               | AB_2903394   |

| Applications                              | Tested Dilution | Publications |
|---|-----------------|--------------|
| Western Blot (WB)                         | 1:1,000-1:3,000 | -            |
| Immunohistochemistry (Paraffin) (IHC (P)) | 1:200           | -            |
| Immunocytochemistry (ICC/IF)              | 1:100-1:500     | -            |

## Product Specific Information

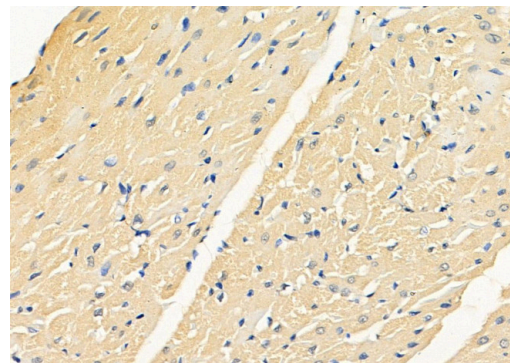
Antibody detects endogenous levels of total KLHL3.

Product Images For KLHL3 Polyclonal Antibody



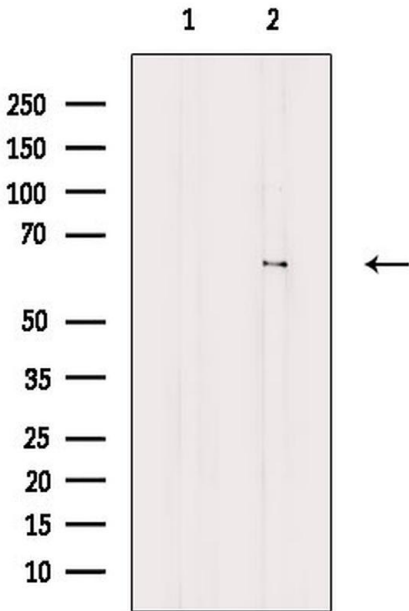
**KLHL3 Antibody (PA5-118894) in ICC/IF**

Immunocytochemical analysis of KLHL3 in A549 cells using a KLHL3 polyclonal antibody (Product # PA5-118894). The samples were fixed with PFA and permeabilized in 0.1% Triton X-100, then blocked in 10% serum for 45 minutes at 25°C. Samples were then incubated with the primary antibody and mouse anti-beta tubulin Ab for 1 hour at 37°C. An AlexaFluor594 conjugated goat anti-rabbit IgG(H+L) Ab(Red) and an AlexaFluor488 conjugated goat anti-mouse IgG(H+L) Ab(Green) were used as the secondary antibody. The nuclear counter stain is DAPI (blue).



**KLHL3 Antibody (PA5-118894) in IHC (P)**

Immunohistochemical analysis of KLHL3 in Rat heart tissue using a KLHL3 polyclonal antibody (Product # PA5-118894). The sample was formaldehyde fixed and a heat mediated antigen retrieval step in citrate buffer was performed. The sample was then blocked and incubated with the primary antibody at 4°C overnight. An HRP conjugated anti-Rabbit antibody was used as the secondary antibody.



**KLHL3 Antibody (PA5-118894) in WB**

Western blot analysis of KLHL3 in K562 cells(heat shock treatment) using a KLHL3 polyclonal antibody (Product # PA5-118894). The lane on the left was treated with blocking peptide.

For Research Use Only. Not for use in diagnostic procedures. Not for resale without express authorization. Products are warranted to operate or perform substantially in conformance with published Product specifications in effect at the time of sale, as set forth in the Production documentation, specifications and/or accompanying package inserts ("Documentation"). No claim of suitability for use in applications regulated by FDA is made. The warranty provided herein is valid only when used by properly trained individuals. Unless otherwise stated in the Documentation, this warranty is limited to one year from date of shipment when the Product is subjected to normal, proper and intended usage. This warranty does not extend to anyone other than the Buyer. Any model or sample furnished to Buyer is merely illustrative of the general type and quality of goods and does not represent that any Product will conform to such model or sample. NO OTHER WARRANTIES, EXPRESS OR IMPLIED, ARE GRANTED INCLUDING WITHOUT LIMITATION, IMPLIED WARRANTIES OF MERCHANTABILITY, FITNESS FOR ANY PARTICULAR PURPOSE, OR NON INFRINGEMENT. BUYER'S EXCLUSIVE REMEDY FOR NON-CONFORMING PRODUCTS DURING THE WARRANTY PERIOD IS LIMITED TO REPAIR, REPLACEMENT OF OR REFUND FOR THE NON-CONFORMING PRODUCT(S) AT SELLER'S SOLE OPTION. THERE IS NO OBLIGATION TO REPAIR, REPLACE OR REFUND FOR PRODUCTS AS THE RESULT OF (I) ACCIDENT, DISASTER OR EVENT OF FORCE MAJEURE, (II) MISUSE, FAULT OR NEGLIGENCE OF OR BY BUYER, (III) USE OF THE PRODUCTS IN A MANNER FOR WHICH THEY WERE NOT DESIGNED, OR (IV) IMPROPER STORAGE AND HANDLING OF THE PRODUCTS. Unless otherwise expressly stated on the Product or in the documentation accompanying the Product, the Product is intended for research only and is not to be used for any other purpose, including without limitation, unauthorized commercial uses, in vitro diagnostic uses, ex vivo or in vivo therapeutic uses, or any type of consumption by or application to human or animals.