

# ACSL1 Polyclonal Antibody

## Product Details

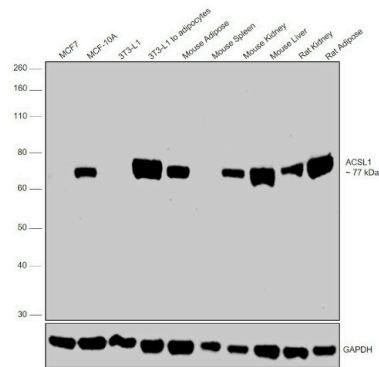
Size	100 µL
Species Reactivity	Human, Mouse, Rat
Published Species	Rat
Host/Isotype	Rabbit / IgG
Class	Polyclonal
Type	Antibody
Conjugate	Unconjugated
Immunogen	Synthetic peptide corresponding to a sequence of human ACSL1
Form	Liquid
Concentration	36 µg/mL
Purification	Antigen affinity chromatography
Storage buffer	0.01M HEPES, pH 7.5, with 0.15M NaCl, 100µg/mL BSA, 50% glycerol
Contains	no preservative
Storage conditions	-20°C
RRID	AB_10984144

Applications	Tested Dilution	Publications
Western Blot (WB)	1:1,000	2 Publications
Immunohistochemistry (Paraffin) (IHC (P))	1:50	-
Immunocytochemistry (ICC/IF)	1:100	-
Miscellaneous PubMed (Misc)	-	1 Publication

## Product Specific Information

It is not recommended to aliquot this antibody.

Product Images For ACSL1 Polyclonal Antibody

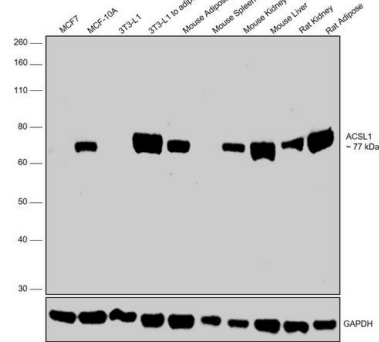


ACSL1 Antibody (PA5-17136)

Antibody specificity was demonstrated by detection of differential basal expression of the target across cell lines and tissues tested owing to their inherent genetic constitution. Relative expression of ACSL1 was observed in MCF-10A in comparison to MCF7 in cell lines and in Mouse Adipose, Mouse Liver in comparison to Mouse Spleen and Mouse Kidney which are reported to be low expressing for ACSL1 using Anti-ACSL1 Polyclonal Antibody (Product # PA5-17136) in Western Blot. (doi:10.1093/carcin/bgx020; 10.1038/srep19661 (2016)). {RE}

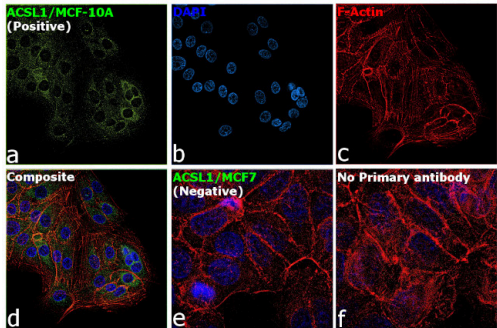
ACSL1 Antibody (PA5-17136) in WB

Western blot was performed using Anti-ACSL1 Polyclonal Antibody (Product # PA5-17136) and a 77 kDa band corresponding to ACSL1 was observed across cell lines and tissues tested except in MCF7, undifferentiated 3T3-L1 and Mouse Spleen, which are reported to be negative for ACSL1. Whole cell extracts (30 µg lysate) of MCF7 (Lane 1), MCF-10A (Lane 2), 3T3-L1 (Lane 3), 3T3-L1 differentiated to adipocytes (Lane 4), tissue extracts of Mouse Adipose (Lane 5), Mouse Spleen (Lane 6), Mouse Kidney (Lane 7), Mouse Liver (Lane 8), Rat Kidney (Lane 9) and Rat Adipose (Lane 10) were electrophoresed using NuPAGE™ 10% Bis-Tris Protein Gel (Product # NP0302BOX). The blot was probed with the primary antibody (1:1000 dilution) and detected by chemiluminescence with Goat anti-Rabbit IgG (H+L), Superclonal™ Recombinant Secondary Antibody, HRP (Product # A27036, 1:4000 dilution) using the iBright FL 1000 (Product # A32752). Chemiluminescent detection was performed using Novex® ECL Chemiluminescent Substrate Reagent Kit (Product # WP20005).



ACSL1 Antibody (PA5-17136)

Antibody specificity was demonstrated by detection of differential basal expression of the target across cell models owing to their inherent genetic constitution. Immunofluorescence analysis using Anti-ACSL1 Polyclonal antibody (Product # PA5-17136) shows positive staining of ACSL1 in MCF-10A cell line when compared to MCF7. {RE}



View more figures on [thermofisher.cn](https://thermofisher.cn)

Western Blot (2)

Cell reports	Year 2023
<b>Neddylation is required for perinatal cardiac development through stimulation of metabolic maturation.</b>	
"Published figure using ACSL1 polyclonal antibody (Product # PA5-17136) in Western Blot"	
Authors: Zou J,Wang W,Lu Y,Ayala J,Dong K,Zhou H,Wang J,Chen W,Weintraub NL,Zhou J,Li J,Su H	
Frontiers in endocrinology	Year 2021
<b>Proteomic and Structural Manifestations of Cardiomyopathy in Rat Models of Obesity and Weight Loss.</b>	Species Rat
"Published figure using ACSL1 polyclonal antibody (Product # PA5-17136) in Western Blot"	
Authors: Likiewicz AD,Marczak ,Bogus K,Likiewicz D,Przybya M,Lewin-Kowalik J	

Miscellaneous PubMed (1)

The Journal of biological chemistry	Year 2015
<b>Ca2+ Binding/Permeation via Calcium Channel, CaV1.1, Regulates the Intracellular Distribution of the Fatty Acid Transport Protein, CD36, and Fatty Acid Metabolism.</b>	
"Published figure using ACSL1 polyclonal antibody (Product # PA5-17136) in Miscellaneous"	
Authors: Georgiou DK,Dagnino-Acosta A,Lee CS,Griffin DM,Wang H,Lagor WR,Pautler RG,Dirksen RT,Hamilton SL	

For Research Use Only. Not for use in diagnostic procedures. Not for resale without express authorization. Products are warranted to operate or perform substantially in conformance with published Product specifications in effect at the time of sale, as set forth in the Production documentation, specifications and/or accompanying package inserts ("Documentation"). No claim of suitability for use in applications regulated by FDA is made. The warranty provided herein is valid only when used by properly trained individuals. Unless otherwise stated in the Documentation, this warranty is limited to one year from date of shipment when the Product is subjected to normal, proper and intended usage. This warranty does not extend to anyone other than the Buyer. Any model or sample furnished to Buyer is merely illustrative of the general type and quality of goods and does not represent that any Product will conform to such model or sample. NO OTHER WARRANTIES, EXPRESS OR IMPLIED, ARE GRANTED INCLUDING WITHOUT LIMITATION, IMPLIED WARRANTIES OF MERCHANTABILITY, FITNESS FOR ANY PARTICULAR PURPOSE, OR NON INFRINGEMENT. BUYER'S EXCLUSIVE REMEDY FOR NON-CONFORMING PRODUCTS DURING THE WARRANTY PERIOD IS LIMITED TO REPAIR, REPLACEMENT OF OR REFUND FOR THE NON-CONFORMING PRODUCT(S) AT SELLER'S SOLE OPTION. THERE IS NO OBLIGATION TO REPAIR, REPLACE OR REFUND FOR PRODUCTS AS THE RESULT OF (I) ACCIDENT, DISASTER OR EVENT OF FORCE MAJEURE, (II) MISUSE, FAULT OR NEGLIGENCE OF OR BY BUYER, (III) USE OF THE PRODUCTS IN A MANNER FOR WHICH THEY WERE NOT DESIGNED, OR (IV) IMPROPER STORAGE AND HANDLING OF THE PRODUCTS. Unless otherwise expressly stated on the Product or in the documentation accompanying the Product, the Product is intended for research only and is not to be used for any other purpose, including without limitation, unauthorized commercial uses, in vitro diagnostic uses, ex vivo or in vivo therapeutic uses, or any type of consumption by or application to human or animals.