

# Phospho-RSK1 (Thr573) Polyclonal Antibody

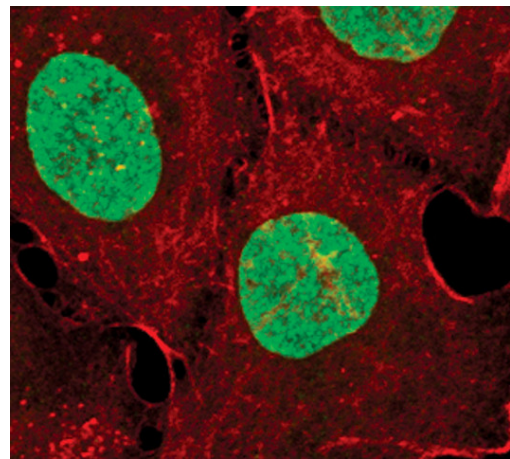
Product Details	
Size	100 µL
Species Reactivity	Human, Mouse, Rat
Host/Isotype	Rabbit / IgG
Class	Polyclonal
Type	Antibody
Conjugate	Unconjugated
Immunogen	Synthetic phosphopeptide corresponding to residues surrounding pThr573 of human p90RSK
Form	Liquid
Concentration	38 µg/mL
Purification	Antigen affinity chromatography
Storage buffer	0.01M HEPES, pH 7.5, with 0.15M NaCl, 100µg/mL BSA, 50% glycerol
Contains	no preservative
Storage conditions	-20°C
RRID	AB_10989467

Applications	Tested Dilution	Publications
Western Blot (WB)	1:1,000	-
Immunocytochemistry (ICC/IF)	1:400	-

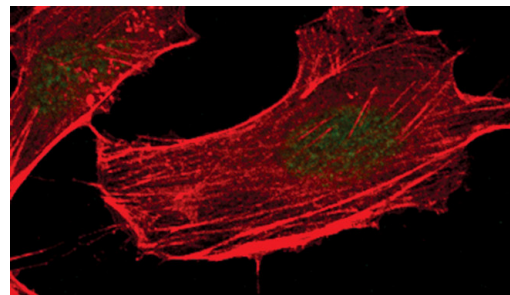
## Product Specific Information

It is not recommended to aliquot this antibody.

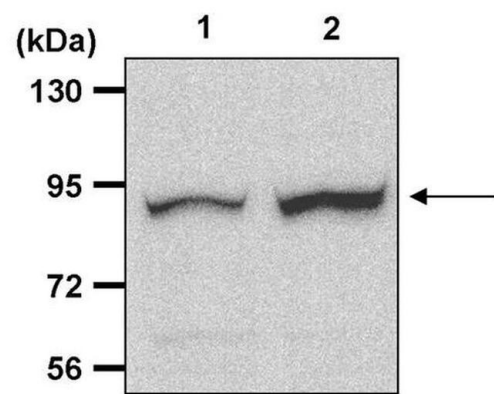
Product Images For Phospho-RSK1 (Thr573) Polyclonal Antibody



**Phospho-RSK1 (Thr573) Antibody (PA5-17841) in ICC/IF**  
Immunofluorescent analysis of Phospho-p90RSK pThr573 in HeLa cells, TPA-treated, using a Phospho-p90RSK pThr573 polyclonal antibody (Product # PA5-17841) (green). Actin filaments are labeled with a fluorescent red phalloidin.



**Phospho-RSK1 (Thr573) Antibody (PA5-17841) in ICC/IF**  
Immunofluorescent analysis of Phospho-p90RSK pThr573 in HeLa cells using a Phospho-p90RSK pThr573 polyclonal antibody (Product # PA5-17841) (green). Actin filaments are labeled with a fluorescent red phalloidin.



**Phospho-RSK1 (Thr573) Antibody (PA5-17841) in WB**  
Western blot analysis of Phospho-p90RSK (pThr573) was performed by loading 20 µg of HEK293T whole cell lysates, from cells either left untreated (Lane 1) or induced with 100 nM PMA (Lane 2) for 15 minutes, per well onto an SDS-PAGE gel. Proteins were transferred to a PVDF membrane and blocked with 5% non-fat dry milk in TBST for 1 hour at room temperature. The membrane was probed with a Phospho-p90RSK pThr573 polyclonal antibody (Product # PA5-17841) at a dilution of 1:250 overnight at 4°C, washed in TBST, and probed with an HRP-conjugated goat anti-rabbit IgG secondary antibody at a dilution of 1:40,000 for 1 hour at room temperature. Detection was performed using ECL substrate. Data courtesy of the Innovators Program.

For Research Use Only. Not for use in diagnostic procedures. Not for resale without express authorization. Products are warranted to operate or perform substantially in conformance with published Product specifications in effect at the time of sale, as set forth in the Production documentation, specifications and/or accompanying package inserts ("Documentation"). No claim of suitability for use in applications regulated by FDA is made. The warranty provided herein is valid only when used by properly trained individuals. Unless otherwise stated in the Documentation, this warranty is limited to one year from date of shipment when the Product is subjected to normal, proper and intended usage. This warranty does not extend to anyone other than the Buyer. Any model or sample furnished to Buyer is merely illustrative of the general type and quality of goods and does not represent that any Product will conform to such model or sample. NO OTHER WARRANTIES, EXPRESS OR IMPLIED, ARE GRANTED INCLUDING WITHOUT LIMITATION, IMPLIED WARRANTIES OF MERCHANTABILITY, FITNESS FOR ANY PARTICULAR PURPOSE, OR NON INFRINGEMENT. BUYER'S EXCLUSIVE REMEDY FOR NON-CONFORMING PRODUCTS DURING THE WARRANTY PERIOD IS LIMITED TO REPAIR, REPLACEMENT OF OR REFUND FOR THE NON-CONFORMING PRODUCT(S) AT SELLER'S SOLE OPTION. THERE IS NO OBLIGATION TO REPAIR, REPLACE OR REFUND FOR PRODUCTS AS THE RESULT OF (I) ACCIDENT, DISASTER OR EVENT OF FORCE MAJEURE, (II) MISUSE, FAULT OR NEGLIGENCE OF OR BY BUYER, (III) USE OF THE PRODUCTS IN A MANNER FOR WHICH THEY WERE NOT DESIGNED, OR (IV) IMPROPER STORAGE AND HANDLING OF THE PRODUCTS. Unless otherwise expressly stated on the Product or in the documentation accompanying the Product, the Product is intended for research only and is not to be used for any other purpose, including without limitation, unauthorized commercial uses, in vitro diagnostic uses, ex vivo or in vivo therapeutic uses, or any type of consumption by or application to human or animals.