

# Phospho-p70 S6 Kinase (Thr421, Ser424) Polyclonal Antibody

Product Details	
Size	100 µL
Species Reactivity	Human, Mouse, Non-human primate, Rat
Published Species	Human, Rhesus monkey
Host/Isotype	Rabbit / IgG
Class	Polyclonal
Type	Antibody
Conjugate	Unconjugated
Immunogen	Synthetic phosphopeptide corresponding to residues surrounding pThr421/Ser424 of human p70 S6 kinase
Form	Liquid
Concentration	85 µg/mL
Purification	Antigen affinity chromatography
Storage buffer	0.01M HEPES, pH 7.5, with 0.15M NaCl, 100µg/mL BSA, 50% glycerol
Contains	no preservative
Storage conditions	-20°C
RRID	AB_10987476

Applications	Tested Dilution	Publications
Western Blot (WB)	1:1,000	2 Publications
Immunocytochemistry (ICC/IF)	1:100	-
Immunoprecipitation (IP)	1:100	-

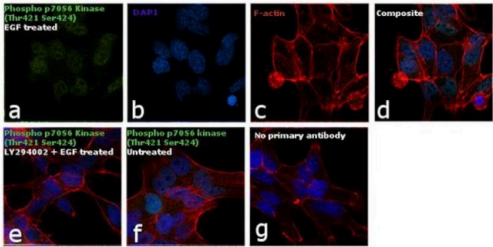
## Product Specific Information

It is not recommended to aliquot this antibody.

Product Images For Phospho-p70 S6 Kinase (Thr421, Ser424) Polyclonal Antibody

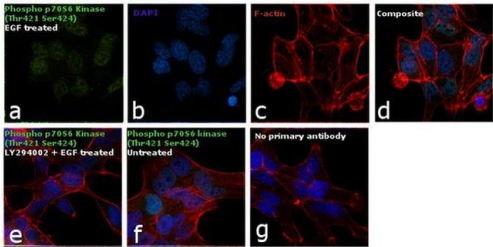
Phospho-p70 S6 Kinase (Thr421, Ser424) Antibody (PA5-17884) in ICC/IF

Immunofluorescence analysis of Phospho-p70 S6 Kinase (Thr421,Ser424) was performed using 70% confluent log phase LnCap cells treated with 200 ng/mL EGF for 10 minutes. The cells were fixed with 4% paraformaldehyde for 10 minutes, permeabilized with 0.1% Triton™ X-100 for 10 minutes, and blocked with 1% BSA for 1 hour at room temperature. The cells were labeled with Phospho-p70 S6 Kinase (Thr421,Ser424) Polyclonal Antibody (Product # PA5-17884) at 1:100 dilution in 0.1% BSA, incubated overnight at 4 degree Celsius and then labeled with Goat anti-Rabbit IgG (Heavy Chain) Superclonal™ Secondary Antibody, Alexa Fluor® 488 conjugate (Product # A27034) at a dilution of 1:2000 for 45 minutes at room temperature (Panel a: green). Nuclei (Panel b: blue) were stained with SlowFade® Gold Antifade Mountant with DAPI (Product # S36938). F-actin (Panel c: red) was stained with Rhodamine Phalloidin (Product # R415, 1:300). Panel d represents the merged image showing nuclear and cytoplasmic localization. Panel e represents cells treated with antagonist, LY294002 (25 uM for 2hrs) followed by EGF (200 ng/mL for 10 minutes), showing reduced expression of phospho-p70 S6 Kinase. Panel f shows the untreated cells showing basal expression of phospho p70 S6 Kinase. Panel g shows control cells with no primary antibody to assess background. The images were captured at 60X magnification.



Phospho-p70 S6 Kinase (Thr421, Ser424) Antibody (PA5-17884)

Altered expression of target protein upon cell treatment demonstrates antibody specificity. Immunofluorescence analysis of Phospho-p70S6 kinase (Thr421Ser424) using Phospho-p70S6 Kinase (Ser421Ser424) Polyclonal Antibody (Product # PA5-17884) shows inhibition of p70S6 kinase phosphorylation at Thr421Ser424 residue in LnCap cell line upon pretreatment antagonist LY294002 following EGF treatment. {TM}



View more figures on [thermofisher.cn](http://thermofisher.cn)

Western Blot (2)

<p><b>Aging</b></p> <p><b>Anterior thalamic nucleus stimulation protects hippocampal neurons by activating autophagy in epileptic monkeys.</b></p> <p>"PA5-17884 was used in Western Blotting to study the underlying effect of autophagy on the anterior nucleus of the thalamus (ANT-DBS)-mediated neuroprotection in epileptic monkeys."</p> <p>Authors: Du TT,Zhu G,Chen Y,Shi L,Liu D,Liu Y,Zhang X,Zhang J</p>	<p><b>Year</b></p> <p>2020</p> <p><b>Species</b></p> <p>Rhesus monkey</p> <p><b>Dilution</b></p> <p>1:1000</p>
<p><b>Leukemia &amp; lymphoma</b></p> <p><b>Sorafenib induces paradoxical phosphorylation of the extracellular signal-regulated kinase pathway in acute myeloid leukemia cells lacking FLT3-ITD mutation.</b></p> <p>"PA5-17884 was used in western blot to investigate the effects of sorafenib on acute myeloid leukemia cell lines lacking FLT3-ITD"</p> <p>Authors: Fouladi F,Jehn LB,Metzelder SK,Hub F,Henkenius K,Burchert A,Brendel C,Stiewe T,Neubauer A</p>	<p><b>Year</b></p> <p>2016</p> <p><b>Species</b></p> <p>Human</p>

For Research Use Only. Not for use in diagnostic procedures. Not for resale without express authorization. Products are warranted to operate or perform substantially in conformance with published Product specifications in effect at the time of sale, as set forth in the Production documentation, specifications and/or accompanying package inserts ("Documentation"). No claim of suitability for use in applications regulated by FDA is made. The warranty provided herein is valid only when used by properly trained individuals. Unless otherwise stated in the Documentation, this warranty is limited to one year from date of shipment when the Product is subjected to normal, proper and intended usage. This warranty does not extend to anyone other than the Buyer. Any model or sample furnished to Buyer is merely illustrative of the general type and quality of goods and does not represent that any Product will conform to such model or sample. NO OTHER WARRANTIES, EXPRESS OR IMPLIED, ARE GRANTED INCLUDING WITHOUT LIMITATION, IMPLIED WARRANTIES OF MERCHANTABILITY, FITNESS FOR ANY PARTICULAR PURPOSE, OR NON INFRINGEMENT. BUYER'S EXCLUSIVE REMEDY FOR NON-CONFORMING PRODUCTS DURING THE WARRANTY PERIOD IS LIMITED TO REPAIR, REPLACEMENT OF OR REFUND FOR THE NON-CONFORMING PRODUCT(S) AT SELLER'S SOLE OPTION. THERE IS NO OBLIGATION TO REPAIR, REPLACE OR REFUND FOR PRODUCTS AS THE RESULT OF (i) ACCIDENT, DISASTER OR EVENT OF FORCE MAJEURE, (ii) MISUSE, FAULT OR NEGLIGENCE OF OR BY BUYER, (iii) USE OF THE PRODUCTS IN A MANNER FOR WHICH THEY WERE NOT DESIGNED, OR (iv) IMPROPER STORAGE AND HANDLING OF THE PRODUCTS. Unless otherwise expressly stated on the Product or in the documentation accompanying the Product, the Product is intended for research only and is not to be used for any other purpose, including without limitation, unauthorized commercial uses, in vitro diagnostic uses, ex vivo or in vivo therapeutic uses, or any type of consumption by or application to human or animals.