

MTM1 Polyclonal Antibody

Product Details	
Size	100 µg
Species Reactivity	Human, Mouse
Published Species	Human
Host/Isotype	Goat / IgG
Class	Polyclonal
Type	Antibody
Conjugate	Unconjugated
Immunogen	Synthetic peptide sequence (SSPSQMMPHVQTHF) corresponding to the C-terminus amino acids of MTM1
Form	Liquid
Concentration	0.5 mg/mL
Purification	Ammonium sulfate precipitation
Storage buffer	TBS, pH 7.3, with 0.5% BSA
Contains	0.02% sodium azide
Storage conditions	-20° C, Avoid Freeze/Thaw Cycles
RRID	AB_11002306

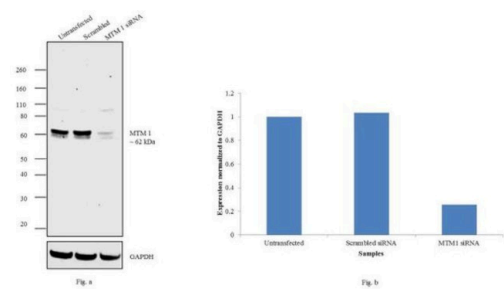
Applications	Tested Dilution	Publications
Western Blot (WB)	1-3 µg/mL	1 Publication
Immunohistochemistry (Paraffin) (IHC (P))	10 µg/mL	-

Product Specific Information

This antibody is predicted to react with bovine, canine and mouse based on sequence homology.

This antibody is tested in Peptide ELISA: antibody detection limit dilution 16,000.

Product Images For MTM1 Polyclonal Antibody

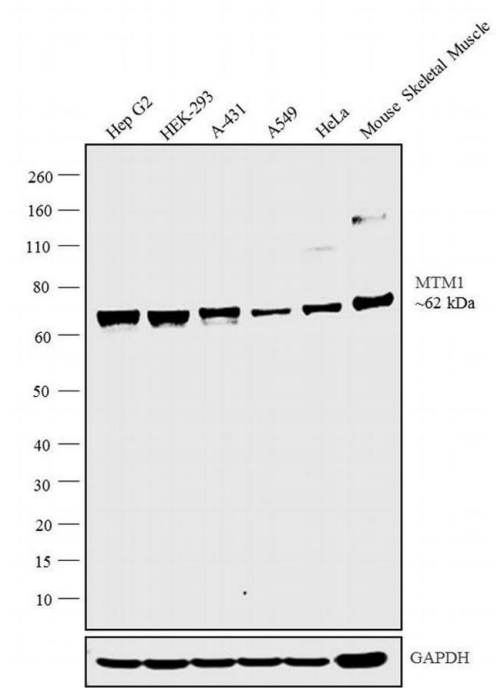


MTM1 Antibody (PA5-17972)

Antibody specificity was demonstrated by siRNA mediated knockdown of target protein. Hep G2 cells were transfected with MTM 1 siRNA and loss of signal was observed in Western Blot using Anti-MTM 1 Polyclonal Antibody (Product # PA5-17972). {KD}

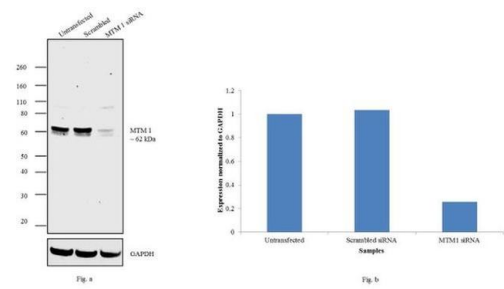
MTM1 Antibody (PA5-17972) in WB

Western blot analysis was performed membrane enriched extracts (30 µg lysate) of Hep G2 (Lane 1), HEK-293 (Lane 2), A-431 (Lane 3), A549 (Lane 4), HeLa (Lane 5) and tissue extract of Mouse Skeletal Muscle (Lane 6). The blot was probed with Anti-MTM1 antibody (Product # PA5-17972, 1µg/mL) and detected by chemiluminescence using Rabbit anti-Goat IgG Heavy Chain Superclonal™ Secondary Antibody, HRP conjugate (Product # A27014, 0.25 µg/mL, 1:4000 dilution). A 62 kDa band corresponding to MTM1 was observed across the cell lines and tissue tested.



MTM1 Antibody (PA5-17972) in WB

Knockdown of MTM 1 was achieved by transfecting Hep G2 cells with MTM 1 specific siRNAs (Silencer® select Product # s9041). Western blot analysis (Fig. a) was performed using whole cell extracts from the MTM 1 knockdown cells (lane 3), non-specific scrambled siRNA transfected cells (lane 2) and untransfected cells (lane 1). The blots were probed with MTM 1 Polyclonal Antibody (Product # PA5-17972, 1:250 dilution) and Rabbit anti-Goat IgG Heavy Chain Superclonal™ Secondary Antibody, HRP conjugate (Product # A27014, 0.25 µg/mL, 1:4000 dilution). Densitometric analysis of this western blot is shown in histogram (Fig. b). Decrease in signal upon siRNA mediated knock down confirms that antibody is specific to MTM 1.



View more figures on thermofisher.cn

Western Blot (1)

European journal of human genetics : EJHG	Year 2021
Pathogenic deep intronic MTM1 variant activates a pseudo-exon encoding a nonsense codon resulting in severe X-linked myotubular myopathy.	Species Human
<p>"PA5-17972 was used in Western Blot to report a novel deep intronic MTM1 variant NG_008199.1(NM_000252.2):c.1468-577A>G identified by whole genome sequencing in an individual with severe hypotonia, no respiratory effort at birth and centralised nuclei on muscle biopsy."</p> <p>Authors: Bryen SJ,Oates EC,Evesson FJ,Lu JK,Waddell LB,Joshi H,Ryan MM,Cummings BB,McLean CA,MacArthur DG,Kornberg AJ,Cooper ST</p>	

For Research Use Only. Not for use in diagnostic procedures. Not for resale without express authorization. Products are warranted to operate or perform substantially in conformance with published Product specifications in effect at the time of sale, as set forth in the Production documentation, specifications and/or accompanying package inserts ("Documentation"). No claim of suitability for use in applications regulated by FDA is made. The warranty provided herein is valid only when used by properly trained individuals. Unless otherwise stated in the Documentation, this warranty is limited to one year from date of shipment when the Product is subjected to normal, proper and intended usage. This warranty does not extend to anyone other than the Buyer. Any model or sample furnished to Buyer is merely illustrative of the general type and quality of goods and does not represent that any Product will conform to such model or sample. NO OTHER WARRANTIES, EXPRESS OR IMPLIED, ARE GRANTED INCLUDING WITHOUT LIMITATION, IMPLIED WARRANTIES OF MERCHANTABILITY, FITNESS FOR ANY PARTICULAR PURPOSE, OR NON-INFRINGEMENT. BUYER'S EXCLUSIVE REMEDY FOR NON-CONFORMING PRODUCTS DURING THE WARRANTY PERIOD IS LIMITED TO REPAIR, REPLACEMENT OF OR REFUND FOR THE NON-CONFORMING PRODUCT(S) AT SELLER'S SOLE OPTION. THERE IS NO OBLIGATION TO REPAIR, REPLACE OR REFUND FOR PRODUCTS AS THE RESULT OF (I) ACCIDENT, DISASTER OR EVENT OF FORCE MAJEURE, (II) MISUSE, FAULT OR NEGLIGENCE OF OR BY BUYER, (III) USE OF THE PRODUCTS IN A MANNER FOR WHICH THEY WERE NOT DESIGNED, OR (IV) IMPROPER STORAGE AND HANDLING OF THE PRODUCTS. Unless otherwise expressly stated on the Product or in the documentation accompanying the Product, the Product is intended for research only and is not to be used for any other purpose, including without limitation, unauthorized commercial uses, in vitro diagnostic uses, ex vivo or in vivo therapeutic uses, or any type of consumption by or application to human or animals.