

PD-1 Polyclonal Antibody

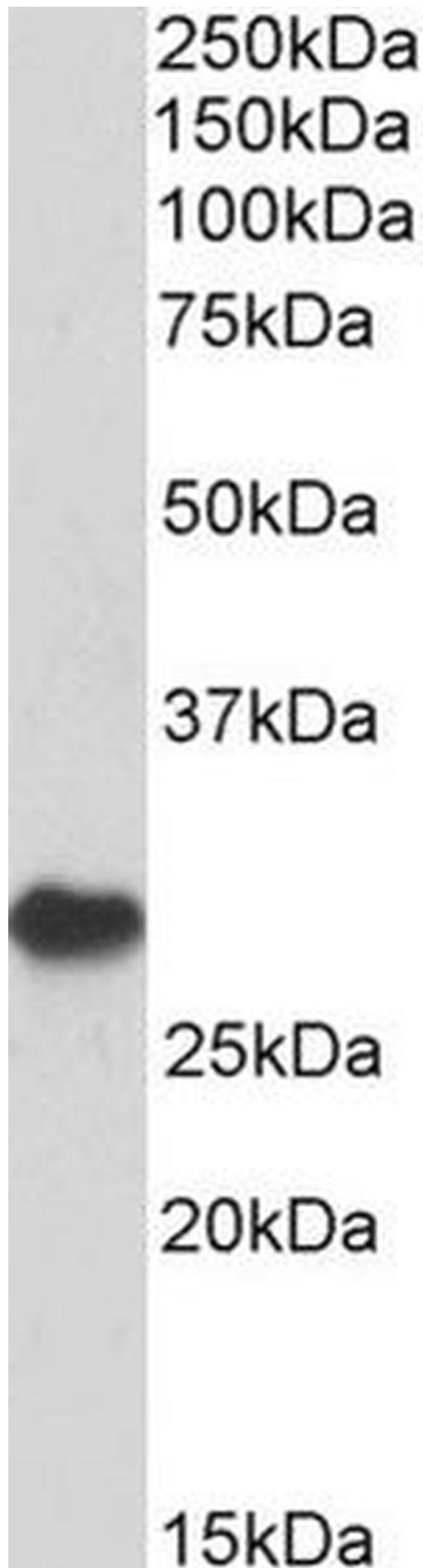
Product Details	
Size	100 µg
Species Reactivity	Human
Host/Isotype	Goat / IgG
Class	Polyclonal
Type	Antibody
Conjugate	Unconjugated
Immunogen	Synthetic peptide sequence (GELDFQWREKTPE) corresponding to the internal amino acids of PDCD1
Form	Liquid
Concentration	0.5 mg/mL
Storage conditions	-20° C, Avoid Freeze/Thaw Cycles
RRID	AB_10978702

Applications	Tested Dilution	Publications
Flow Cytometry (Flow)	10 µg/mL	-

Product Specific Information

This antibody is predicted to react with bovine, canine, mouse and rat based on sequence homology.

Product Images For PD-1 Polyclonal Antibody



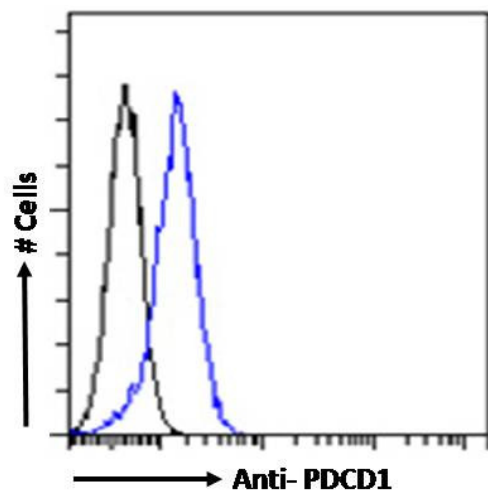
PD-1 Antibody (PA5-18378) in WB

Western blot analysis of PD-1 by a PD-1 monoclonal antibody (Product # PA5-18378) at a concentration of 1 $\mu\text{g/mL}$. Human Bone Marrow lysate (35 μg protein in RIPA buffer). Detected by chemiluminescence.



PD-1 Antibody (PA5-18378) in WB

Western Blot staining of Human Bone Marrow lysate using Product # PA5-18378 at a concentration of 0.6 µg/mL, the primary antibody incubation was 1 hour and the detection method was chemiluminescence.



PD-1 Antibody (PA5-18378) in Flow

Flow cytometric analysis of PD-1 in Jurkat cells using a polyclonal antibody (Product #PA5-18378). Jurkat cells (blue line) were paraformaldehyde fixed and permeabilized with 0.5% Triton. The primary antibody was incubated for one hour (10 µg/mL) followed by an Alexa Fluor 488 secondary antibody (1 µg/mL). IgG control: Unimmunized goat IgG (black line) followed by an Alexa Fluor 488 secondary antibody.

For Research Use Only. Not for use in diagnostic procedures. Not for resale without express authorization. Products are warranted to operate or perform substantially in conformance with published Product specifications in effect at the time of sale, as set forth in the Production documentation, specifications and/or accompanying package inserts ("Documentation"). No claim of suitability for use in applications regulated by FDA is made. The warranty provided herein is valid only when used by properly trained individuals. Unless otherwise stated in the Documentation, this warranty is limited to one year from date of shipment when the Product is subjected to normal, proper and intended usage. This warranty does not extend to anyone other than the Buyer. Any model or sample furnished to Buyer is merely illustrative of the general type and quality of goods and does not represent that any Product will conform to such model or sample. NO OTHER WARRANTIES, EXPRESS OR IMPLIED, ARE GRANTED INCLUDING WITHOUT LIMITATION, IMPLIED WARRANTIES OF MERCHANTABILITY, FITNESS FOR ANY PARTICULAR PURPOSE, OR NON-INFRINGEMENT. BUYER'S EXCLUSIVE REMEDY FOR NON-CONFORMING PRODUCTS DURING THE WARRANTY PERIOD IS LIMITED TO REPAIR, REPLACEMENT OF OR REFUND FOR THE NON-CONFORMING PRODUCT(S) AT SELLER'S SOLE OPTION. THERE IS NO OBLIGATION TO REPAIR, REPLACE OR REFUND FOR PRODUCTS AS THE RESULT OF (i) ACCIDENT, DISASTER OR EVENT OF FORCE MAJEURE, (ii) MISUSE, FAULT OR NEGLIGENCE OF OR BY BUYER, (iii) USE OF THE PRODUCTS IN A MANNER FOR WHICH THEY WERE NOT DESIGNED, OR (iv) IMPROPER STORAGE AND HANDLING OF THE PRODUCTS. Unless otherwise expressly stated on the Product or in the documentation accompanying the Product, the Product is intended for research only and is not to be used for any other purpose, including without limitation, unauthorized commercial uses, in vitro diagnostic uses, ex vivo or in vivo therapeutic uses, or any type of consumption by or application to human or animals.