

TLR7 Polyclonal Antibody, FITC

Product Details	
Size	100 µL
Species Reactivity	Human, Mouse, Rat
Host/Isotype	Rabbit / IgG
Class	Polyclonal
Type	Antibody
Conjugate	FITC
Excitation/Emission Max	498/517 nm
Immunogen	KLH-conjugated synthetic peptide corresponding to amino acids 706-749 of human TLR7.
Form	Liquid
Concentration	1.21 mg/mL
Purification	Protein G
Storage buffer	50mM sodium borate
Contains	0.05% sodium azide
Storage conditions	4° C, store in dark
RRID	AB_2540654

Applications	Tested Dilution	Publications
Western Blot (WB)	Assay-Dependent	-
Immunocytochemistry (ICC/IF)	Assay-Dependent	-
Flow Cytometry (Flow)	1 µL per million cells	-
Immunoprecipitation (IP)	Assay-Dependent	-

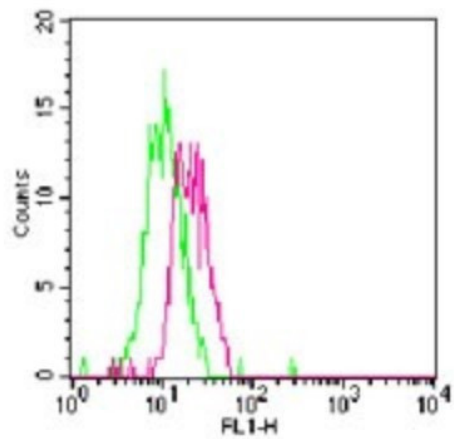
Product Specific Information

This antibody will cross-react with mouse TLR7. In human Ramos cells, additional bands are seen.

Product Images For TLR7 Polyclonal Antibody, FITC

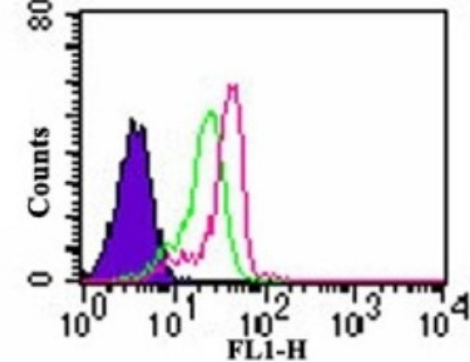
TLR7 Antibody (PA5-23127) in Flow

Flow cytometry of TLR7 in Balb/c mouse splenocytes. Samples were incubated in TLR7 polyclonal antibody (Product # PA5-23127). Green represents rabbit IgG isotype control ; red represents anti-TLR7 antibody.



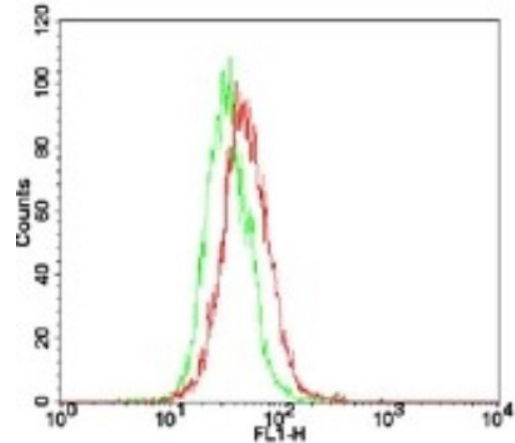
TLR7 Antibody (PA5-23127) in Flow

Flow cytometry of TLR7 in human monocytes. Samples were incubated in TLR7 polyclonal antibody (Product # PA5-23127) using a dilution of 0.5 µg/10^6 cells. Shaded histogram represents cells alone, green represents rabbit IgG isotype control, red represents anti-TLR7 antibody.



TLR7 Antibody (PA5-23127) in Flow

Flow cytometry of TLR7 in TLR7/HEK 293 cells. Samples were incubated in TLR7 polyclonal antibody (Product # PA5-23127) using a dilution of 1 µg/10^6 cells. Green represents Vector/HEK 293 cells; red represents TLR7/HEK 293.



For Research Use Only. Not for use in diagnostic procedures. Not for resale without express authorization. Products are warranted to operate or perform substantially in conformance with published Product specifications in effect at the time of sale, as set forth in the Production documentation, specifications and/or accompanying package inserts ("Documentation"). No claim of suitability for use in applications regulated by FDA is made. The warranty provided herein is valid only when used by properly trained individuals. Unless otherwise stated in the Documentation, this warranty is limited to one year from date of shipment when the Product is subjected to normal, proper and intended usage. This warranty does not extend to anyone other than the Buyer. Any model or sample furnished to Buyer is merely illustrative of the general type and quality of goods and does not represent that any Product will conform to such model or sample. NO OTHER WARRANTIES, EXPRESS OR IMPLIED, ARE GRANTED INCLUDING WITHOUT LIMITATION, IMPLIED WARRANTIES OF MERCHANTABILITY, FITNESS FOR ANY PARTICULAR PURPOSE, OR NON INFRINGEMENT. BUYER'S EXCLUSIVE REMEDY FOR NON-CONFORMING PRODUCTS DURING THE WARRANTY PERIOD IS LIMITED TO REPAIR, REPLACEMENT OF OR REFUND FOR THE NON-CONFORMING PRODUCT(S) AT SELLER'S SOLE OPTION. THERE IS NO OBLIGATION TO REPAIR, REPLACE OR REFUND FOR PRODUCTS AS THE RESULT OF (i) ACCIDENT, DISASTER OR EVENT OF FORCE MAJEURE, (ii) MISUSE, FAULT OR NEGLIGENCE OF OR BY BUYER, (iii) USE OF THE PRODUCTS IN A MANNER FOR WHICH THEY WERE NOT DESIGNED, OR (iv) IMPROPER STORAGE AND HANDLING OF THE PRODUCTS. Unless otherwise expressly stated on the Product or in the documentation accompanying the Product, the Product is intended for research only and is not to be used for any other purpose, including without limitation, unauthorized commercial uses, in vitro diagnostic uses, ex vivo or in vivo therapeutic uses, or any type of consumption by or application to human or animals.