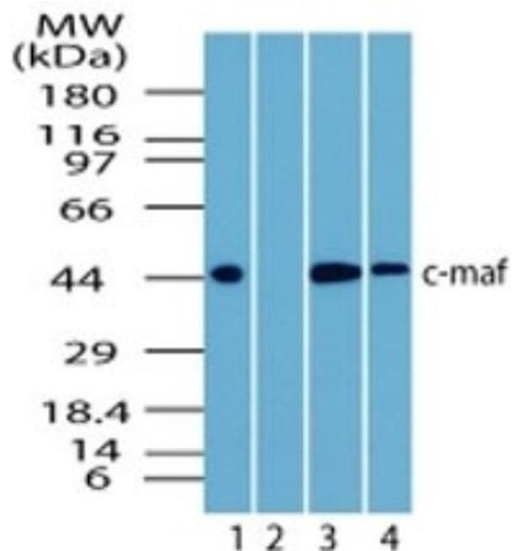


c-MAF Polyclonal Antibody

Product Details	
Size	100 µg
Species Reactivity	Bovine, Human, Mouse, Rat
Published Species	Mouse
Host/Isotype	Rabbit / IgG
Class	Polyclonal
Type	Antibody
Conjugate	Unconjugated
Immunogen	Synthetic peptide corresponding to amino acids 75-110 of human c-maf
Form	Liquid
Concentration	1.0 mg/mL
Purification	Antigen affinity chromatography
Storage buffer	PBS
Contains	0.05% sodium azide
Storage conditions	Store at 4°C short term. For long term storage, store at -20°C, avoiding freeze/thaw cycles.
RRID	AB_2540705

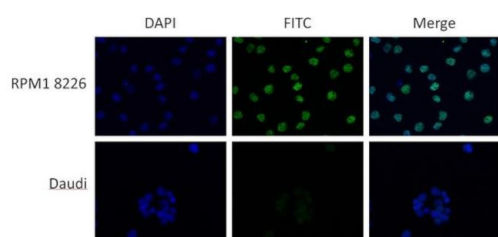
Applications	Tested Dilution	Publications
Western Blot (WB)	1-4 µg/mL	-
Immunohistochemistry (Paraffin) (IHC (P))	1-2 µg/mL	1 Publication
Immunocytochemistry (ICC/IF)	1:500	1 Publication

Product Images For c-MAF Polyclonal Antibody



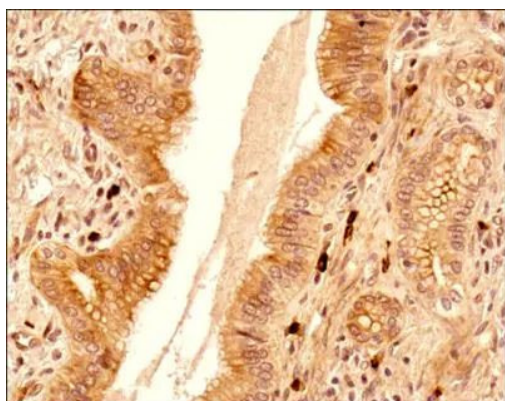
c-MAF Antibody (PA5-23179) in WB

Western blot analysis of c-MAF in Lysate from human brain in the 1) absence, 2) presence of immunizing peptide, 3) mouse brain and 4) rat brain. Samples were incubated in c-MAF polyclonal antibody (Product # PA5-23179) using a dilution of 3 µg/mL.



c-MAF Antibody (PA5-23179) in ICC/IF

Immunofluorescent analysis of cMAF (green) in RPMI 8226 and Daudi cells. Cells were immersion fixed in 4% PFA and permeabilized in 0.5% Triton X-100. Cells were stained with cMAF polyclonal antibody (Product # PA5-23179) at a dilution of 1:500 overnight at 4 degrees, washed in PBS followed by incubation with an Alexa 488 donkey anti-rabbit secondary antibody at a dilution of 1:100 for one hour at room temperature. Data courtesy of the Antibody Data Exchange Program.



c-MAF Antibody (PA5-23179) in IHC (P)

Immunohistochemical analysis of c-MAF in formalin fixed paraffin embedded (FFPE) tissue section of human liver cancer. Samples were incubated in c-MAF polyclonal antibody (Product # PA5-23179) using a dilution of 1:500 followed by HRP conjugated anti-rabbit secondary antibody with DAB reagent. The sections were further counterstained with hematoxylin for labeling cellular nuclei. This c-MAF antibody showed a very strong nuclear and moderate to strong staining in the endothelial cells (blood vessels) and in a subset of apparently infiltrating inflammatory cells. Weak to moderate cytoplasmic and nuclear staining was observed in liver cancer cells and the cells of tumor stroma including fibroblasts.

[View more figures on thermofisher.cn](https://www.thermofisher.cn)

Immunohistochemistry (Paraffin) (1)

Oncogene

MicroRNA-155 contributes to plexiform neurofibroma growth downstream of MEK.

"PA5-23179 was used in Immunohistochemistry to suggest that miR-155 plays a functional role in PNF growth and/or SC proliferation, and that targeting neurofibroma miRs is feasible, and might provide novel therapeutic opportunities."

Authors: Na Y, Hall A, Choi K, Hu L, Rose J, Coover RA, Miller A, Hennigan RF, Dombi E, Kim MO, Subramanian S, Ratner N, Wu J

Year
2021

Species
Mouse

Dilution
1:100

Immunocytochemistry (1)

Oncogene

MicroRNA-155 contributes to plexiform neurofibroma growth downstream of MEK.

"PA5-23179 was used in Immunohistochemistry to suggest that miR-155 plays a functional role in PNF growth and/or SC proliferation, and that targeting neurofibroma miRs is feasible, and might provide novel therapeutic opportunities."

Authors: Na Y, Hall A, Choi K, Hu L, Rose J, Coover RA, Miller A, Hennigan RF, Dombi E, Kim MO, Subramanian S, Ratner N, Wu J

Year
2021

Species
Mouse

Dilution
1:100

For Research Use Only. Not for use in diagnostic procedures. Not for resale without express authorization. Products are warranted to operate or perform substantially in conformance with published Product specifications in effect at the time of sale, as set forth in the Production documentation, specifications and/or accompanying package inserts ("Documentation"). No claim of suitability for use in applications regulated by FDA is made. The warranty provided herein is valid only when used by properly trained individuals. Unless otherwise stated in the Documentation, this warranty is limited to one year from date of shipment when the Product is subjected to normal, proper and intended usage. This warranty does not extend to anyone other than the Buyer. Any model or sample furnished to Buyer is merely illustrative of the general type and quality of goods and does not represent that any Product will conform to such model or sample. NO OTHER WARRANTIES, EXPRESS OR IMPLIED, ARE GRANTED INCLUDING WITHOUT LIMITATION, IMPLIED WARRANTIES OF MERCHANTABILITY, FITNESS FOR ANY PARTICULAR PURPOSE, OR NON INFRINGEMENT. BUYER'S EXCLUSIVE REMEDY FOR NON-CONFORMING PRODUCTS DURING THE WARRANTY PERIOD IS LIMITED TO REPAIR, REPLACEMENT OF OR REFUND FOR THE NON-CONFORMING PRODUCT(S) AT SELLER'S SOLE OPTION. THERE IS NO OBLIGATION TO REPAIR, REPLACE OR REFUND FOR PRODUCTS AS THE RESULT OF (I) ACCIDENT, DISASTER OR EVENT OF FORCE MAJEURE, (II) MISUSE, FAULT OR NEGLIGENCE OF OR BY BUYER, (III) USE OF THE PRODUCTS IN A MANNER FOR WHICH THEY WERE NOT DESIGNED, OR (IV) IMPROPER STORAGE AND HANDLING OF THE PRODUCTS. Unless otherwise expressly stated on the Product or in the documentation accompanying the Product, the Product is intended for research only and is not to be used for any other purpose, including without limitation, unauthorized commercial uses, in vitro diagnostic uses, ex vivo or in vivo therapeutic uses, or any type of consumption by or application to human or animals.