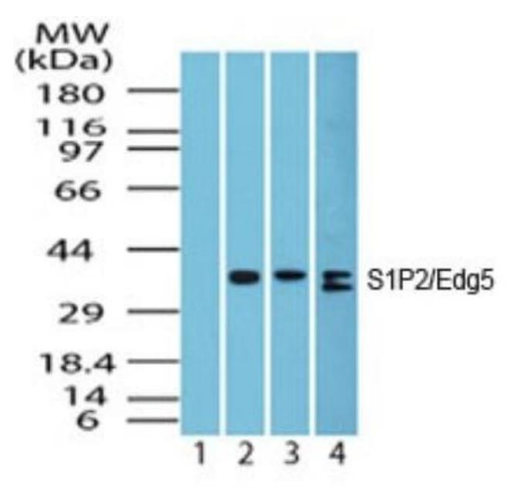


# S1PR2 Polyclonal Antibody

Product Details	
Size	100 µg
Species Reactivity	Human, Mouse, Non-human primate, Rat
Host/Isotype	Rabbit / IgG
Class	Polyclonal
Type	Antibody
Conjugate	Unconjugated
Immunogen	Synthetic peptide (325 LLPLRSSSSSLERGMHMPTS 343) of Edg5/S1P2 protein.
Form	Liquid
Concentration	1 mg/mL
Purification	Protein G
Storage buffer	PBS
Contains	0.05% sodium azide
Storage conditions	Store at 4°C short term. For long term storage, store at -20°C, avoiding freeze/thaw cycles.
RRID	AB_2540734

Applications	Tested Dilution	Publications
Western Blot (WB)	1-2 µg/mL	1 Publication
Immunohistochemistry (Paraffin) (IHC (P))	Assay-Dependent	-
Immunocytochemistry (ICC/IF)	Assay-Dependent	1 Publication
Immunomicroscopy (IM)	-	1 Publication

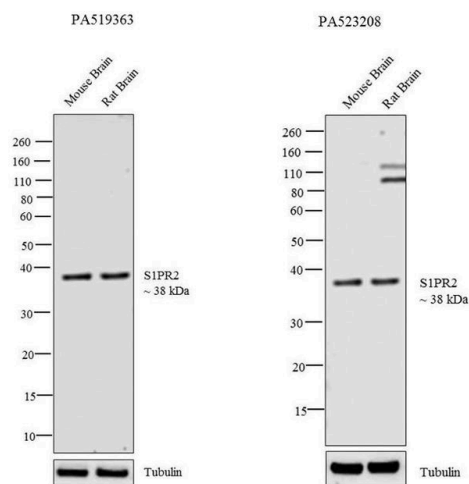
## Product Images For S1PR2 Polyclonal Antibody



**S1PR2 Antibody (PA5-23208) in WB**  
 Western blot analysis of S1PR2 in heart lysate. Samples were incubated in S1PR2 polyclonal antibody (Product # PA5-23208). Lane 1 shows pre-immune sera; Lanes 2, 3 and 4 show this antibody tested on human heart (1 µg/mL), mouse heart (1 µg/mL) and rat heart (2 µg/mL) lysate, respectively.

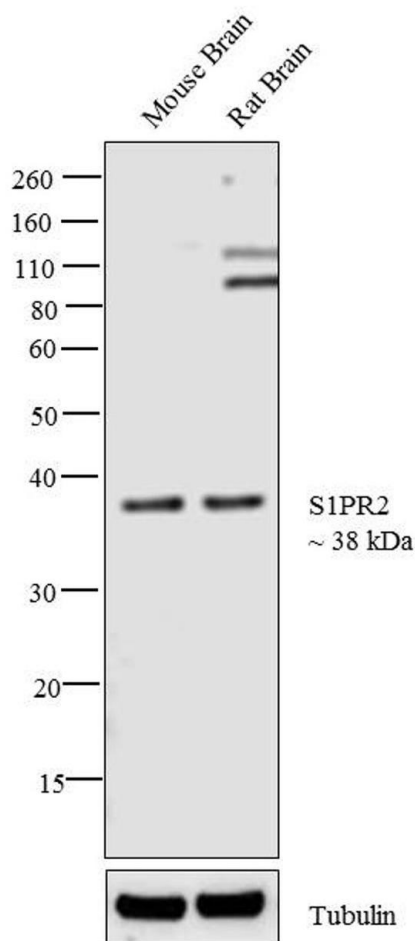
### S1PR2 Antibody (PA5-23208)

Antibody specificity was demonstrated by showing that antibodies raised against the same target protein perform similarly. Western blot of S1PR2 using S1PR2 Polyclonal Antibody (Product # PA5-23208), tested in parallel with S1PR2 Polyclonal Antibody (Product # PA5-19363), shows similar expression of S1PR2 in the tissues tested. {IAV}



### S1PR2 Antibody (PA5-23208) in WB

Western blot analysis was performed on tissue extracts (30 µg lysate) of Mouse Brain (Lane 1) and Rat Brain (Lane 2). The blot was probed with Anti-S1PR2 Polyclonal Antibody (Product # PA5-23208, 1 µg/mL) and detected by chemiluminescence using Goat anti-Rabbit IgG (Heavy Chain) Superclonal™ Secondary Antibody, HRP conjugate (Product # A27036, 0.25 µg/mL, 1:4,000 dilution). A 38 kDa band corresponding to S1PR2 was observed across the tissues tested. Additional bands around 100 and 120 kDa were observed in Rat Brain.



[View more figures on thermofisher.cn](https://www.thermofisher.cn)

Western Blot (1)

<p>Oncotarget</p> <p><b>The sphingosine 1-phosphate receptor 2 is shed in exosomes from breast cancer cells and is N-terminally processed to a short constitutively active form that promotes extracellular signal regulated kinase activation and DNA synthesis in fibroblasts.</b></p> <p>"Published figure using S1PR2 polyclonal antibody (Product # PA5-23208) in Immunocytochemistry"</p> <p>Authors: El Buri A,Adams DR,Smith D,Tate RJ,Mullin M,Pyne S,Pyne NJ</p>	<p>Year 2018</p>
--	----------------------

Immunocytochemistry (1)

<p>Oncotarget</p> <p><b>The sphingosine 1-phosphate receptor 2 is shed in exosomes from breast cancer cells and is N-terminally processed to a short constitutively active form that promotes extracellular signal regulated kinase activation and DNA synthesis in fibroblasts.</b></p> <p>"Published figure using S1PR2 polyclonal antibody (Product # PA5-23208) in Immunocytochemistry"</p> <p>Authors: El Buri A,Adams DR,Smith D,Tate RJ,Mullin M,Pyne S,Pyne NJ</p>	<p>Year 2018</p>
--	----------------------

Immunomicroscopy (1)

<p>Oncotarget</p> <p><b>The sphingosine 1-phosphate receptor 2 is shed in exosomes from breast cancer cells and is N-terminally processed to a short constitutively active form that promotes extracellular signal regulated kinase activation and DNA synthesis in fibroblasts.</b></p> <p>"Published figure using S1PR2 polyclonal antibody (Product # PA5-23208) in Immunocytochemistry"</p> <p>Authors: El Buri A,Adams DR,Smith D,Tate RJ,Mullin M,Pyne S,Pyne NJ</p>	<p>Year 2018</p>
--	----------------------

For Research Use Only. Not for use in diagnostic procedures. Not for resale without express authorization. Products are warranted to operate or perform substantially in conformance with published Product specifications in effect at the time of sale, as set forth in the Production documentation, specifications and/or accompanying package inserts ("Documentation"). No claim of suitability for use in applications regulated by FDA is made. The warranty provided herein is valid only when used by properly trained individuals. Unless otherwise stated in the Documentation, this warranty is limited to one year from date of shipment when the Product is subjected to normal, proper and intended usage. This warranty does not extend to anyone other than the Buyer. Any model or sample furnished to Buyer is merely illustrative of the general type and quality of goods and does not represent that any Product will conform to such model or sample. NO OTHER WARRANTIES, EXPRESS OR IMPLIED, ARE GRANTED INCLUDING WITHOUT LIMITATION, IMPLIED WARRANTIES OF MERCHANTABILITY, FITNESS FOR ANY PARTICULAR PURPOSE, OR NON INFRINGEMENT. BUYER'S EXCLUSIVE REMEDY FOR NON-CONFORMING PRODUCTS DURING THE WARRANTY PERIOD IS LIMITED TO REPAIR, REPLACEMENT OF OR REFUND FOR THE NON-CONFORMING PRODUCT(S) AT SELLER'S SOLE OPTION. THERE IS NO OBLIGATION TO REPAIR, REPLACE OR REFUND FOR PRODUCTS AS THE RESULT OF (i) ACCIDENT, DISASTER OR EVENT OF FORCE MAJEURE, (ii) MISUSE, FAULT OR NEGLIGENCE OF OR BY BUYER, (iii) USE OF THE PRODUCTS IN A MANNER FOR WHICH THEY WERE NOT DESIGNED, OR (iv) IMPROPER STORAGE AND HANDLING OF THE PRODUCTS. Unless otherwise expressly stated on the Product or in the documentation accompanying the Product, the Product is intended for research only and is not to be used for any other purpose, including without limitation, unauthorized commercial uses, in vitro diagnostic uses, ex vivo or in vivo therapeutic uses, or any type of consumption by or application to human or animals.