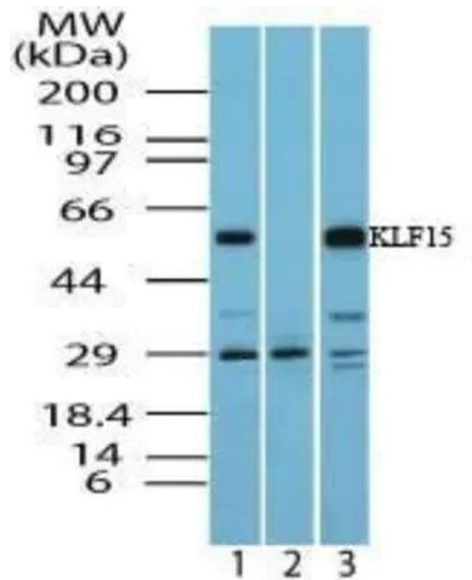


KLF15 Polyclonal Antibody

Product Details	
Size	100 µg
Species Reactivity	Bovine, Human, Mouse
Host/Isotype	Rabbit / IgG
Class	Polyclonal
Type	Antibody
Conjugate	Unconjugated
Immunogen	Synthetic peptide made to an internal portion of the human KLF15 protein (between amino acids 100-200) [UniProt Q9UIH9]
Form	Liquid
Concentration	1.0 mg/mL
Purification	Protein A
Storage buffer	PBS
Contains	0.05% sodium azide
Storage conditions	Store at 4°C short term. For long term storage, store at -20°C, avoiding freeze/thaw cycles.
RRID	AB_2540848

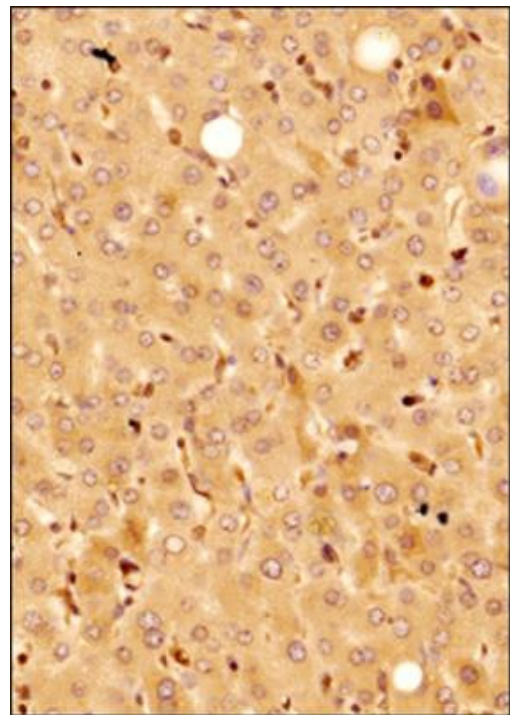
Applications	Tested Dilution	Publications
Western Blot (WB)	1.0-2 µg/mL	-
Immunohistochemistry (Paraffin) (IHC (P))	2-5 µg/mL	-
Immunocytochemistry (ICC/IF)	5 µg/mL	-

Product Images For KLF15 Polyclonal Antibody



KLF15 Antibody (PA5-23324) in WB

Western blot analysis of KLF15 in human liver lysate in the 1) absence and 2) presence of immunizing peptide and 3) mouse liver lysate. Samples were incubated in KLF15 polyclonal antibody (Product # PA5-23324) using a dilution of 1.0 µg/mL followed by a goat anti-rabbit Ig HRP secondary antibody. PicoTect ECL substrate solution was used for this test.



KLF15 Antibody (PA5-23324) in IHC (P)

Immunohistochemical analysis of KLF15 in Tissue section of human liver. Samples were incubated in KLF15 polyclonal antibody (Product # PA5-23324) using a dilution of 1:100. The antibody generated strong cytoplasmic staining with some nuclear signal in the hepatocytes, while in Kupffer cells, the signal was mainly nuclear and was most intense among all cell types.

For Research Use Only. Not for use in diagnostic procedures. Not for resale without express authorization. Products are warranted to operate or perform substantially in conformance with published Product specifications in effect at the time of sale, as set forth in the Production documentation, specifications and/or accompanying package inserts ("Documentation"). No claim of suitability for use in applications regulated by FDA is made. The warranty provided herein is valid only when used by properly trained individuals. Unless otherwise stated in the Documentation, this warranty is limited to one year from date of shipment when the Product is subjected to normal, proper and intended usage. This warranty does not extend to anyone other than the Buyer. Any model or sample furnished to Buyer is merely illustrative of the general type and quality of goods and does not represent that any Product will conform to such model or sample. NO OTHER WARRANTIES, EXPRESS OR IMPLIED, ARE GRANTED INCLUDING WITHOUT LIMITATION, IMPLIED WARRANTIES OF MERCHANTABILITY, FITNESS FOR ANY PARTICULAR PURPOSE, OR NON INFRINGEMENT. BUYER'S EXCLUSIVE REMEDY FOR NON-CONFORMING PRODUCTS DURING THE WARRANTY PERIOD IS LIMITED TO REPAIR, REPLACEMENT OF OR REFUND FOR THE NON-CONFORMING PRODUCT(S) AT SELLER'S SOLE OPTION. THERE IS NO OBLIGATION TO REPAIR, REPLACE OR REFUND FOR PRODUCTS AS THE RESULT OF (I) ACCIDENT, DISASTER OR EVENT OF FORCE MAJEURE, (II) MISUSE, FAULT OR NEGLIGENCE OF OR BY BUYER, (III) USE OF THE PRODUCTS IN A MANNER FOR WHICH THEY WERE NOT DESIGNED, OR (IV) IMPROPER STORAGE AND HANDLING OF THE PRODUCTS. Unless otherwise expressly stated on the Product or in the documentation accompanying the Product, the Product is intended for research only and is not to be used for any other purpose, including without limitation, unauthorized commercial uses, in vitro diagnostic uses, ex vivo or in vivo therapeutic uses, or any type of consumption by or application to human or animals.