

Phospho-HDAC1 (Ser421, Ser423) Polyclonal Antibody

Product Details	
Size	100 µL
Species Reactivity	Human, Mouse, Rat
Host/Isotype	Rabbit / IgG
Class	Polyclonal
Type	Antibody
Conjugate	Unconjugated
Immunogen	Synthetic phosphopeptide derived from human HDAC1 around the phosphorylation site of Serine 421/423
Form	Liquid
Concentration	1 mg/mL
Purification	Antigen affinity chromatography
Storage buffer	PBS, pH 7.2, with 50% glycerol
Contains	0.02% sodium azide
Storage conditions	Store at 4°C short term. For long term storage, store at -20°C, avoiding freeze/thaw cycles.
RRID	AB_2553810

Applications	Tested Dilution	Publications
Western Blot (WB)	1:1,000	-
Immunohistochemistry (IHC)	-	1 Publication
Immunohistochemistry (Paraffin) (IHC (P))	1:50-1:200	-
Immunocytochemistry (ICC/IF)	1:200-1:400	1 Publication

Product Specific Information

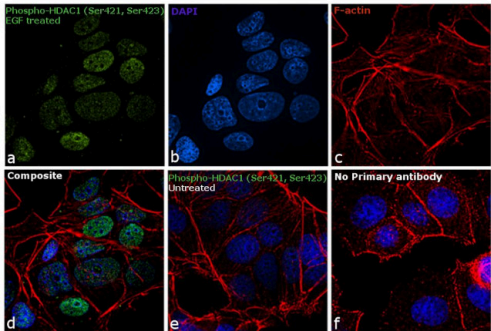
This antibody detects endogenous protein at a molecular weight of 55 kDa.

Purity is >95% by SDS-PAGE.

Product Images For Phospho-HDAC1 (Ser421, Ser423) Polyclonal Antibody

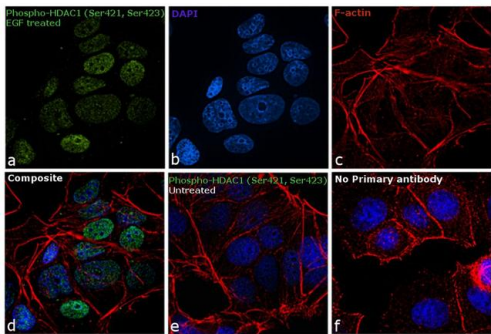
Phospho-HDAC1 (Ser421, Ser423) Antibody (PA5-36911) in ICC/IF

Immunofluorescence analysis of Phospho-HDAC1 (Ser421, Ser423) was performed using 70% confluent log phase MCF-7 cells treated with EGF (0.1 ng/mL for 30 min). The cells were fixed with 4% paraformaldehyde for 10 minutes, permeabilized with 0.1% Triton™ X-100 for 15 minutes, and blocked with 1% BSA for 1 hour at room temperature. The cells were labeled with Phospho-HDAC1 (Ser421, Ser423) Polyclonal Antibody (Product # PA5-36911) at 5 µg/mL in 0.1% BSA, incubated at 4 degree celsius overnight and then labeled with Goat anti-Rabbit IgG (Heavy Chain) Superclonal™ Secondary Antibody, Alexa Fluor® 488 conjugate (Product # A27034) at a dilution of 1:2000 for 45 minutes at room temperature (Panel a: green). Nuclei (Panel b: blue) were stained with ProLong™ Diamond Antifade Mountant with DAPI (Product # P36962). F-actin (Panel c: red) was stained with Rhodamine Phalloidin (Product # R415, 1:300). Panel d represents the merged image showing nuclear signal upon EGF treatment. Panel e represents the control cells showing no signal. Panel f represents control cells with no primary antibody to assess background. The images were captured at 60X magnification.



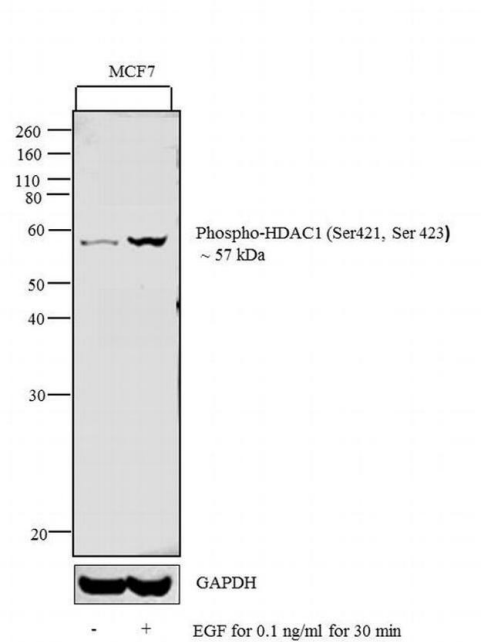
Phospho-HDAC1 (Ser421, Ser423) Antibody (PA5-36911)

Altered expression of target protein upon cell treatment demonstrates antibody specificity. Immunofluorescence analysis of Phospho-HDAC1 (Ser421, Ser423) using Phospho-HDAC1 (Ser421, Ser423) Polyclonal Antibody (Product # PA5-36911) shows increased expression of proteins in MCF-7 cell line upon treatment with EGF. {TM}



Phospho-HDAC1 (Ser421, Ser423) Antibody (PA5-36911)

Altered expression of target protein upon cell treatment demonstrates antibody specificity. Western blot analysis of Phospho-HDAC1 (Ser421, Ser423) using Anti-Phospho-HDAC1 (Ser421, Ser423) Polyclonal Antibody (Product # PA5-36911) shows proteins in MCF-7 cell line upon treatment with EGF. {TM}



View more figures on thermofisher.cn

Immunohistochemistry (1)

<p>The Journal of neuroscience : the official journal of the Society for Neuroscience</p> <p>Subcellular Distribution of HDAC1 in Neurotoxic Conditions Is Dependent on Serine Phosphorylation.</p> <p>"Published figure using Phospho-HDAC1 (Ser421, Ser423) polyclonal antibody (Product # PA5-36911) in Immunofluorescence"</p> <p>Authors: Zhu Y,Vidaurre OG,Adula KP,Kezunovic N,Wentling M,Huntley GW,Casaccia P</p>	<p>Year 2017</p>
---	----------------------

Immunocytochemistry (1)

<p>The Journal of neuroscience : the official journal of the Society for Neuroscience</p> <p>Subcellular Distribution of HDAC1 in Neurotoxic Conditions Is Dependent on Serine Phosphorylation.</p> <p>"Published figure using Phospho-HDAC1 (Ser421, Ser423) polyclonal antibody (Product # PA5-36911) in Immunofluorescence"</p> <p>Authors: Zhu Y,Vidaurre OG,Adula KP,Kezunovic N,Wentling M,Huntley GW,Casaccia P</p>	<p>Year 2017</p>
---	----------------------

For Research Use Only. Not for use in diagnostic procedures. Not for resale without express authorization. Products are warranted to operate or perform substantially in conformance with published Product specifications in effect at the time of sale, as set forth in the Production documentation, specifications and/or accompanying package inserts ("Documentation"). No claim of suitability for use in applications regulated by FDA is made. The warranty provided herein is valid only when used by properly trained individuals. Unless otherwise stated in the Documentation, this warranty is limited to one year from date of shipment when the Product is subjected to normal, proper and intended usage. This warranty does not extend to anyone other than the Buyer. Any model or sample furnished to Buyer is merely illustrative of the general type and quality of goods and does not represent that any Product will conform to such model or sample. NO OTHER WARRANTIES, EXPRESS OR IMPLIED, ARE GRANTED INCLUDING WITHOUT LIMITATION, IMPLIED WARRANTIES OF MERCHANTABILITY, FITNESS FOR ANY PARTICULAR PURPOSE, OR NON INFRINGEMENT. BUYER'S EXCLUSIVE REMEDY FOR NON-CONFORMING PRODUCTS DURING THE WARRANTY PERIOD IS LIMITED TO REPAIR, REPLACEMENT OF OR REFUND FOR THE NON-CONFORMING PRODUCT(S) AT SELLER'S SOLE OPTION. THERE IS NO OBLIGATION TO REPAIR, REPLACE OR REFUND FOR PRODUCTS AS THE RESULT OF (I) ACCIDENT, DISASTER OR EVENT OF FORCE MAJEURE, (II) MISUSE, FAULT OR NEGLIGENCE OF OR BY BUYER, (III) USE OF THE PRODUCTS IN A MANNER FOR WHICH THEY WERE NOT DESIGNED, OR (IV) IMPROPER STORAGE AND HANDLING OF THE PRODUCTS. Unless otherwise expressly stated on the Product or in the documentation accompanying the Product, the Product is intended for research only and is not to be used for any other purpose, including without limitation, unauthorized commercial uses, in vitro diagnostic uses, ex vivo or in vivo therapeutic uses, or any type of consumption by or application to human or animals.