

PYGL Polyclonal Antibody

Product Details

Size	100 µL
Species Reactivity	Human
Host/Isotype	Rabbit / IgG
Class	Polyclonal
Type	Antibody
Conjugate	Unconjugated
Immunogen	Fusion protein corresponding to residues near the C terminal of human phosphorylase, glycogen, liver
Form	Liquid
Concentration	2 mg/mL
Purification	Antigen affinity chromatography
Storage buffer	PBS, pH 7.4, with 40% glycerol
Contains	0.05% sodium azide
Storage conditions	-20°C
RRID	AB_2635932

Applications

Tested Dilution

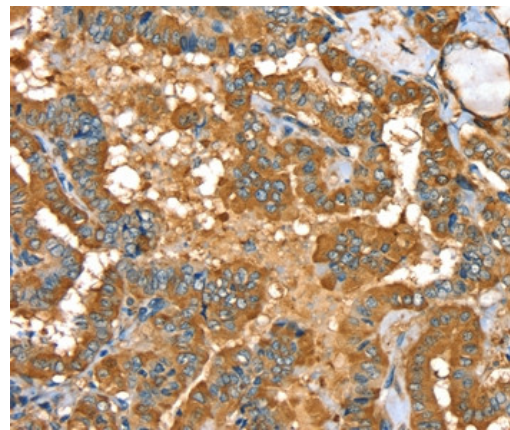
Publications

Western Blot (WB)	1:500-1:2,000	-
Immunohistochemistry (Paraffin) (IHC (P))	1:30-1:150	-

Product Specific Information

The antibody detects endogenous levels of total PYGL protein.

Product Images For PYGL Polyclonal Antibody

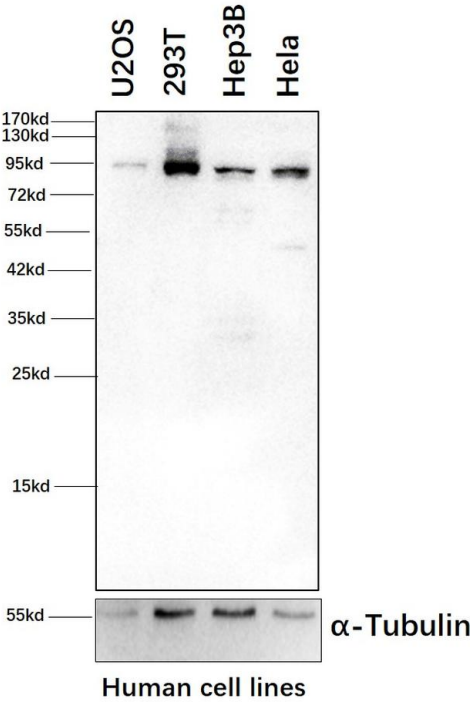


PYGL Antibody (PA5-50479) in IHC (P)

Immunohistochemical analysis of PYGL in paraffin embedded Human thyroid cancer tissue using PYGL Polyclonal Antibody (Product # PA5-50479) at a 1:35 dilution.

PYGL Antibody (PA5-50479) in WB

Western blot analysis of PYGL was performed by loading whole-cell lysates of four different human cell lines. PYGL was detected at approximately 95 kDa by using a PYGL polyclonal Antibody (Product # PA5-50479) at a concentration of 2.0 µg/mL in Blocking Buffer overnight at 4°C on a rocking platform, followed by a 1-hour room-temperature incubation of a donkey anti-rabbit IgG antibody at a dilution of 1:5,000. Data courtesy of Thermo Scientific KOL Program.



For Research Use Only. Not for use in diagnostic procedures. Not for resale without express authorization. Products are warranted to operate or perform substantially in conformance with published Product specifications in effect at the time of sale, as set forth in the Production documentation, specifications and/or accompanying package inserts ("Documentation"). No claim of suitability for use in applications regulated by FDA is made. The warranty provided herein is valid only when used by properly trained individuals. Unless otherwise stated in the Documentation, this warranty is limited to one year from date of shipment when the Product is subjected to normal, proper and intended usage. This warranty does not extend to anyone other than the Buyer. Any model or sample furnished to Buyer is merely illustrative of the general type and quality of goods and does not represent that any Product will conform to such model or sample. NO OTHER WARRANTIES, EXPRESS OR IMPLIED, ARE GRANTED INCLUDING WITHOUT LIMITATION, IMPLIED WARRANTIES OF MERCHANTABILITY, FITNESS FOR ANY PARTICULAR PURPOSE, OR NON INFRINGEMENT. BUYER'S EXCLUSIVE REMEDY FOR NON-CONFORMING PRODUCTS DURING THE WARRANTY PERIOD IS LIMITED TO REPAIR, REPLACEMENT OF OR REFUND FOR THE NON-CONFORMING PRODUCT(S) AT SELLER'S SOLE OPTION. THERE IS NO OBLIGATION TO REPAIR, REPLACE OR REFUND FOR PRODUCTS AS THE RESULT OF (I) ACCIDENT, DISASTER OR EVENT OF FORCE MAJEURE, (II) MISUSE, FAULT OR NEGLIGENCE OF OR BY BUYER, (III) USE OF THE PRODUCTS IN A MANNER FOR WHICH THEY WERE NOT DESIGNED, OR (IV) IMPROPER STORAGE AND HANDLING OF THE PRODUCTS. Unless otherwise expressly stated on the Product or in the documentation accompanying the Product, the Product is intended for research only and is not to be used for any other purpose, including without limitation, unauthorized commercial uses, in vitro diagnostic uses, ex vivo or in vivo therapeutic uses, or any type of consumption by or application to human or animals.