

WSB2 Polyclonal Antibody

Product Details	
Size	100 µL
Species Reactivity	Human
Published Species	Mouse
Host/Isotype	Rabbit / IgG
Class	Polyclonal
Type	Antibody
Conjugate	Unconjugated
Immunogen	Recombinant protein corresponding to Human WSB2
Form	Liquid
Concentration	0.3 mg/mL
Purification	Antigen affinity chromatography
Storage buffer	PBS, pH 7.2, with 40% glycerol
Contains	0.02% sodium azide
Storage conditions	Store at 4°C short term. For long term storage, store at -20°C, avoiding freeze/thaw cycles.
RRID	AB_2649666

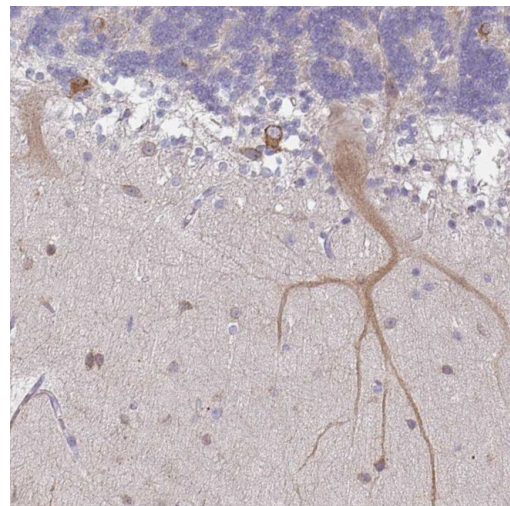
Applications	Tested Dilution	Publications
Western Blot (WB)	-	1 Publication
Immunohistochemistry (IHC)	1:50-1:200	-

Product Specific Information

Immunogen sequence: LVTASYDTNV IMWDPYTGER LRSLHHTQVD PAMDDSDVHI SSLRSVCFSP EGLYLATVAD DRLL

Highest antigen sequence identity to the following orthologs: Mouse - 92%, Rat - 89%.

Product Images For WSB2 Polyclonal Antibody



WSB2 Antibody (PA5-62650) in IHC
Immunohistochemical staining of WSB2 in human cerebellum using a WSB2 Polyclonal Antibody (Product # PA5-62650) shows cytoplasmic positivity in Purkinje cells.

1 Reference

Western Blot (1)

Communications biology	Year 2022
R1441C and G2019S LRRK2 knockin mice have distinct striatal molecular, physiological, and behavioral alterations.	Species Mouse
"PA5-62650 was used in Western Blotting to show that increased synaptic PKA activities in the R1441C and not G2019S mice underlie the specific alterations in motor learning deficits."	
Authors: Xenias HS,Chen C,Kang S,Cherian S,Situ X,Shanmugasundaram B,Liu G,Scesa G,Savio Chan C,Parisiadou L	

For Research Use Only. Not for use in diagnostic procedures. Not for resale without express authorization. Products are warranted to operate or perform substantially in conformance with published Product specifications in effect at the time of sale, as set forth in the Production documentation, specifications and/or accompanying package inserts ("Documentation"). No claim of suitability for use in applications regulated by FDA is made. The warranty provided herein is valid only when used by properly trained individuals. Unless otherwise stated in the Documentation, this warranty is limited to one year from date of shipment when the Product is subjected to normal, proper and intended usage. This warranty does not extend to anyone other than the Buyer. Any model or sample furnished to Buyer is merely illustrative of the general type and quality of goods and does not represent that any Product will conform to such model or sample. NO OTHER WARRANTIES, EXPRESS OR IMPLIED, ARE GRANTED INCLUDING WITHOUT LIMITATION, IMPLIED WARRANTIES OF MERCHANTABILITY, FITNESS FOR ANY PARTICULAR PURPOSE, OR NON INFRINGEMENT. BUYER'S EXCLUSIVE REMEDY FOR NON-CONFORMING PRODUCTS DURING THE WARRANTY PERIOD IS LIMITED TO REPAIR, REPLACEMENT OF OR REFUND FOR THE NON-CONFORMING PRODUCT(S) AT SELLER'S SOLE OPTION. THERE IS NO OBLIGATION TO REPAIR, REPLACE OR REFUND FOR PRODUCTS AS THE RESULT OF (i) ACCIDENT, DISASTER OR EVENT OF FORCE MAJEURE, (ii) MISUSE, FAULT OR NEGLIGENCE OF OR BY BUYER, (iii) USE OF THE PRODUCTS IN A MANNER FOR WHICH THEY WERE NOT DESIGNED, OR (iv) IMPROPER STORAGE AND HANDLING OF THE PRODUCTS. Unless otherwise expressly stated on the Product or in the documentation accompanying the Product, the Product is intended for research only and is not to be used for any other purpose, including without limitation, unauthorized commercial uses, in vitro diagnostic uses, ex vivo or in vivo therapeutic uses, or any type of consumption by or application to human or animals.