

KDEL Polyclonal Antibody

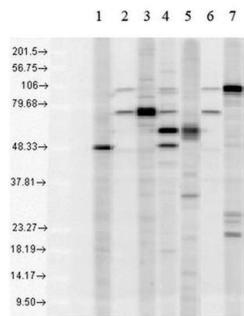
Product Details	
Size	200 µg
Species Reactivity	Human, Mouse, Rat
Host/Isotype	Rabbit / IgG
Class	Polyclonal
Type	Antibody
Conjugate	Unconjugated
Immunogen	KDEL containing peptide immunogen
Form	Liquid
Concentration	1 mg/mL
Purification	Protein A
Storage buffer	PBS, pH 7.2, with 50% glycerol
Contains	0.09% sodium azide
Storage conditions	-20°C
RRID	AB_2736028

Applications	Tested Dilution	Publications
Western Blot (WB)	1:1,000	-
Immunohistochemistry (PFA fixed) (IHC (PFA))	1:100	-
Immunocytochemistry (ICC/IF)	Assay-Dependent	-

Product Specific Information

A 1:1,000 dilution of PA5-77771 was sufficient for detection of KDEL-containing proteins in 20 µg of HeLa cell lysate by ECL immunoblot analysis using goat anti-mouse IgG as the secondary. | Detects KDEL proteins, GRP94, Grp78, PDI and calreticulin. It may also see ERp57 and ERp29.

Product Images For KDEL Polyclonal Antibody



1. PDI control antibody
2. KDEL control antibody clone 10C3
3. Grp78 control antibody
4. SPC-109
5. Calreticulin control antibody
6. KDEL control antibody clone10C3
7. Grp94 control antibody
Mixed human cell lysate (300ug/gel); 1/1000 dilutions;
KDEL(10C3) control antibody 1:500 dilution

KDEL Antibody (PA5-77771) in WB

Western blot analysis of KDEL in human cell line lysates. The sample was incubated with KDEL polyclonal antibody (Product # PA5-77771) using a dilution of 1:500-1:1000.

For Research Use Only. Not for use in diagnostic procedures. Not for resale without express authorization. Products are warranted to operate or perform substantially in conformance with published Product specifications in effect at the time of sale, as set forth in the Production documentation, specifications and/or accompanying package inserts ("Documentation"). No claim of suitability for use in applications regulated by FDA is made. The warranty provided herein is valid only when used by properly trained individuals. Unless otherwise stated in the Documentation, this warranty is limited to one year from date of shipment when the Product is subjected to normal, proper and intended usage. This warranty does not extend to anyone other than the Buyer. Any model or sample furnished to Buyer is merely illustrative of the general type and quality of goods and does not represent that any Product will conform to such model or sample. NO OTHER WARRANTIES, EXPRESS OR IMPLIED, ARE GRANTED INCLUDING WITHOUT LIMITATION, IMPLIED WARRANTIES OF MERCHANTABILITY, FITNESS FOR ANY PARTICULAR PURPOSE, OR NON-INFRINGEMENT. BUYER'S EXCLUSIVE REMEDY FOR NON-CONFORMING PRODUCTS DURING THE WARRANTY PERIOD IS LIMITED TO REPAIR, REPLACEMENT OF OR REFUND FOR THE NON-CONFORMING PRODUCT(S) AT SELLER'S SOLE OPTION. THERE IS NO OBLIGATION TO REPAIR, REPLACE OR REFUND FOR PRODUCTS AS THE RESULT OF (i) ACCIDENT, DISASTER OR EVENT OF FORCE MAJEURE, (ii) MISUSE, FAULT OR NEGLIGENCE OF OR BY BUYER, (iii) USE OF THE PRODUCTS IN A MANNER FOR WHICH THEY WERE NOT DESIGNED, OR (iv) IMPROPER STORAGE AND HANDLING OF THE PRODUCTS. Unless otherwise expressly stated on the Product or in the documentation accompanying the Product, the Product is intended for research only and is not to be used for any other purpose, including without limitation, unauthorized commercial uses, in vitro diagnostic uses, ex vivo or in vivo therapeutic uses, or any type of consumption by or application to human or animals.