

# GRK2 Polyclonal Antibody

Product Details	
Size	100 µL
Species Reactivity	Human, Mouse
Host/Isotype	Rabbit / IgG
Class	Polyclonal
Type	Antibody
Conjugate	Unconjugated
Immunogen	Carrier-protein conjugated synthetic peptide encompassing a sequence within the C-terminus region of human GRK2. The exact sequence is proprietary.
Form	Liquid
Concentration	0.212 mg/mL
Purification	Antigen affinity chromatography
Storage buffer	PBS, pH 7, with 1% BSA, 20% glycerol
Contains	0.025% ProClin 300
Storage conditions	Store at 4°C short term. For long term storage, store at -20°C, avoiding freeze/thaw cycles.
RRID	AB_2735885

Applications	Tested Dilution	Publications
Western Blot (WB)	1:500-1:3,000	-
Immunoprecipitation (IP)	1:100-1:500	-

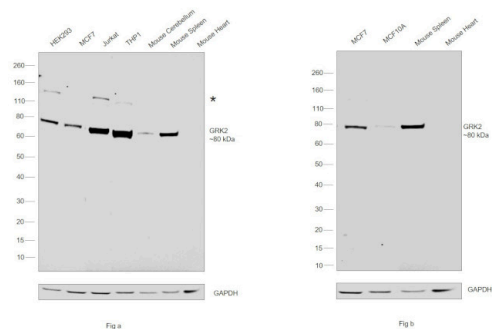
## Product Specific Information

Positive Control: Jurkat, Raji, NCI-H929

Predicted Reactivity: Mouse (100%), Rat (100%), Pig (100%), Bovine (100%)

Store product as a concentrated solution. Centrifuge briefly prior to opening the vial.

## Product Images For GRK2 Polyclonal Antibody



### GRK2 Antibody (PA5-77852)

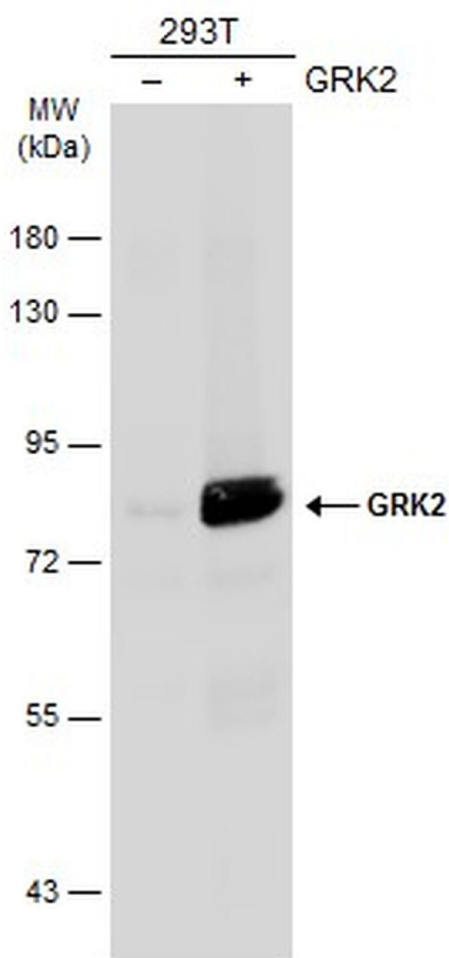
Antibody specificity was demonstrated by detection of differential basal expression of the target across cell lines and tissue tested owing to their inherent genetic constitution. Relative expression of GRK2 was observed in MCF7 and Mouse Spleen in comparison to MCF10A and Mouse Heart using GRK2 Polyclonal Antibody (Product # PA5-77852 ) in Western Blot. {RE}

### GRK2 Antibody (PA5-77852) in WB

Western blot was performed using GRK2 Polyclonal Antibody (Product # PA5-77852) and a 80 kDa band corresponding to GRK2 was observed across cell lines and tissue extracts along with an uncharacterized band (\*) at ~140 kDa in the cell lines tested. Whole cell extracts (30 µg lysate) of HEK293 (Lane 1), MCF7 (Lane 2), Jurkat (Lane 3), THP1 (Lane 4), tissue extracts (30 µg lysate) of Mouse Cerebellum (Lane 5), Mouse Spleen (Lane 6) and Mouse Heart (Lane 7) of Fig a; and MCF7 (Lane 1), MCF10A (Lane 2), Mouse Spleen (Lane 3) and Mouse Heart (Lane 4) of Fig b were electrophoresed using NuPAGE® 4-12 % Bis-Tris gel (Product # NP0322BOX). Resolved proteins were then transferred onto a nitrocellulose membrane (Product # IB23001) by iBlot® 2 Dry Blotting System (Product # IB21001). The blot was probed with the primary antibody (1: 1,000 dilution) and detected by chemiluminescence with Goat anti-Rabbit IgG (Heavy Chain), Superclonal™ Recombinant Secondary Antibody, HRP (Product # A27036, 1:4,000 dilution) using the iBright FL 1000 (Product # A32752). Chemiluminescent detection was performed using Novex® ECL Chemiluminescent Substrate Reagent Kit (Product # WP20005).

### GRK2 Antibody (PA5-77852) in WB

Western Blot analysis of GRK2 was performed by separating 30 µg of non-transfected (–) and transfected (+) 293T whole cell extracts by 5% SDS-PAGE. Proteins were transferred to a membrane and probed with a GRK2 Polyclonal Antibody (Product # PA5-77852) at a dilution of 1:1000. The HRP-conjugated anti-rabbit IgG antibody was used to detect the primary antibody.



View more figures on thermofisher.cn

For Research Use Only. Not for use in diagnostic procedures. Not for resale without express authorization. Products are warranted to operate or perform substantially in conformance with published Product specifications in effect at the time of sale, as set forth in the Production documentation, specifications and/or accompanying package inserts ("Documentation"). No claim of suitability for use in applications regulated by FDA is made. The warranty provided herein is valid only when used by properly trained individuals. Unless otherwise stated in the Documentation, this warranty is limited to one year from date of shipment when the Product is subjected to normal, proper and intended usage. This warranty does not extend to anyone other than the Buyer. Any model or sample furnished to Buyer is merely illustrative of the general type and quality of goods and does not represent that any Product will conform to such model or sample. NO OTHER WARRANTIES, EXPRESS OR IMPLIED, ARE GRANTED INCLUDING WITHOUT LIMITATION, IMPLIED WARRANTIES OF MERCHANTABILITY, FITNESS FOR ANY PARTICULAR PURPOSE, OR NON INFRINGEMENT. BUYER'S EXCLUSIVE REMEDY FOR NON-CONFORMING PRODUCTS DURING THE WARRANTY PERIOD IS LIMITED TO REPAIR, REPLACEMENT OF OR REFUND FOR THE NON-CONFORMING PRODUCT(S) AT SELLER'S SOLE OPTION. THERE IS NO OBLIGATION TO REPAIR, REPLACE OR REFUND FOR PRODUCTS AS THE RESULT OF (I) ACCIDENT, DISASTER OR EVENT OF FORCE MAJEURE, (II) MISUSE, FAULT OR NEGLIGENCE OF OR BY BUYER, (III) USE OF THE PRODUCTS IN A MANNER FOR WHICH THEY WERE NOT DESIGNED, OR (IV) IMPROPER STORAGE AND HANDLING OF THE PRODUCTS. Unless otherwise expressly stated on the Product or in the documentation accompanying the Product, the Product is intended for research only and is not to be used for any other purpose, including without limitation, unauthorized commercial uses, in vitro diagnostic uses, ex vivo or in vivo therapeutic uses, or any type of consumption by or application to human or animals.