

# PDX1 Polyclonal Antibody

Product Details	
Size	100 µL
Species Reactivity	Human, Mouse, Rat
Published Species	Human
Host/Isotype	Rabbit / IgG
Class	Polyclonal
Type	Antibody
Conjugate	Unconjugated
Immunogen	Carrier-protein conjugated synthetic peptide encompassing a sequence within the N-terminus region of human PDX1. The exact sequence is proprietary.
Form	Liquid
Concentration	0.92 mg/mL
Purification	Antigen affinity chromatography
Storage buffer	PBS, pH 7, with 20% glycerol
Contains	0.025% ProClin 300
Storage conditions	Store at 4°C short term. For long term storage, store at -20°C, avoiding freeze/thaw cycles.
RRID	AB_2736337

Applications	Tested Dilution	Publications
Western Blot (WB)	1:500-1:3,000	-
Immunohistochemistry (Paraffin) (IHC (P))	1:100-1:1,000	-
Miscellaneous PubMed (Misc)	-	1 Publication

## Product Specific Information

Positive Control: Jurkat, Raji, NCI-H929, mouse liver, rat liver, AsPC-1, mouse pancreas

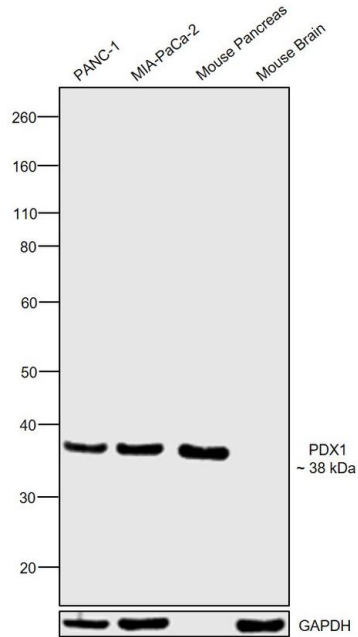
Predicted Reactivity: Dog (100%), Pig (100%)

Store product as a concentrated solution. Centrifuge briefly prior to opening the vial.

Product Images For PDX1 Polyclonal Antibody

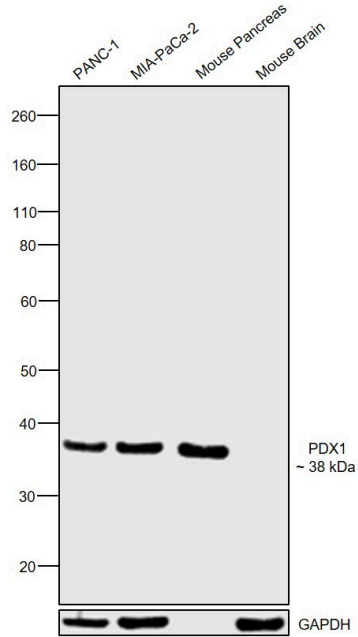
PDX1 Antibody (PA5-78024) in WB

Western blot was performed using Anti-PDX1 Polyclonal Antibody (Product # PA5-78024) and a 38 kDa band corresponding to PDX1 was observed across cell lines and tissues tested except Mouse Brain which is reported to be negative. Whole cell extracts (30 µg lysate) of PANC-1 (Lane 1), MIA-PaCa-2 (Lane 2), tissue extracts of Mouse Pancreas (Lane 3) and Mouse Brain (Lane 4) were electrophoresed using NuPAGE™ 4-12% Bis-Tris Protein Gel (Product # NP0322BOX). Resolved proteins were then transferred onto a nitrocellulose membrane (Product # IB23001) by iBlot® 2 Dry Blotting System (Product # IB21001). The blot was probed with the primary antibody (1:3000 dilution) and detected by chemiluminescence with Goat anti-Rabbit IgG (Heavy Chain) Superclonal™ Recombinant Secondary Antibody, HRP (Product # A27036, 1:4000 dilution) using the iBright FL 1000 (Product # A32752). Chemiluminescent detection was performed using Novex® ECL Chemiluminescent Substrate Reagent Kit (Product # WP20005).



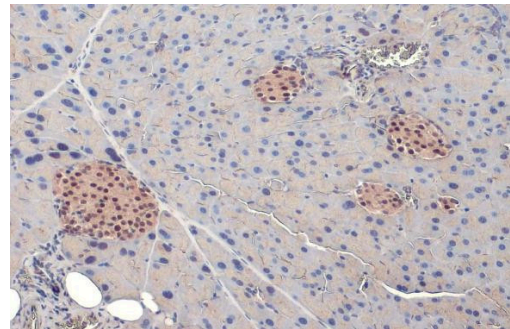
PDX1 Antibody (PA5-78024)

Antibody specificity was demonstrated by detection of differential basal expression of the target across tissues tested owing to their inherent genetic constitution. Relative expression of PDX1 was observed in Mouse Pancreas in comparison to Mouse Brain using Anti-PDX1 Polyclonal Antibody (Product # PA5-78024) in Western Blot. {RE}



PDX1 Antibody (PA5-78024) in IHC (P)

PDX1 Polyclonal Antibody detects PDX1 protein at nucleus by immunohistochemical analysis. Sample: Paraffin-embedded mouse pancreas. PDX1 stained by PDX1 Polyclonal Antibody (Product # PA5-78024) diluted at 1:500. Antigen Retrieval: Citrate buffer, pH 6.0, 15 min.



1 Reference

Miscellaneous PubMed (1)

eLife	Year 2020
Identification of novel, clinically correlated autoantigens in the monogenic autoimmune syndrome APS1 by proteome-wide PhIP-Seq.	Species Human
"PA5-78024 was used in PhIP-seq to highlight the utility of PhIP-Seq for extensively interrogating antigenic repertoires in human autoimmunity and the importance of antigen discovery for improved understanding of disease mechanisms."	Dilution 1:50
Authors: Vazquez SE,Ferré EM,Scheel DW,Sunshine S,Miao B,Mandel-Brehm C,Quandt Z,Chan AY,Cheng M,German M,Lionakis M,DeRisi JL,Anderson MS	

For Research Use Only. Not for use in diagnostic procedures. Not for resale without express authorization. Products are warranted to operate or perform substantially in conformance with published Product specifications in effect at the time of sale, as set forth in the Production documentation, specifications and/or accompanying package inserts ("Documentation"). No claim of suitability for use in applications regulated by FDA is made. The warranty provided herein is valid only when used by properly trained individuals. Unless otherwise stated in the Documentation, this warranty is limited to one year from date of shipment when the Product is subjected to normal, proper and intended usage. This warranty does not extend to anyone other than the Buyer. Any model or sample furnished to Buyer is merely illustrative of the general type and quality of goods and does not represent that any Product will conform to such model or sample. NO OTHER WARRANTIES, EXPRESS OR IMPLIED, ARE GRANTED INCLUDING WITHOUT LIMITATION, IMPLIED WARRANTIES OF MERCHANTABILITY, FITNESS FOR ANY PARTICULAR PURPOSE, OR NON INFRINGEMENT. BUYER'S EXCLUSIVE REMEDY FOR NON-CONFORMING PRODUCTS DURING THE WARRANTY PERIOD IS LIMITED TO REPAIR, REPLACEMENT OF OR REFUND FOR THE NON-CONFORMING PRODUCT(S) AT SELLER'S SOLE OPTION. THERE IS NO OBLIGATION TO REPAIR, REPLACE OR REFUND FOR PRODUCTS AS THE RESULT OF (I) ACCIDENT, DISASTER OR EVENT OF FORCE MAJEURE, (II) MISUSE, FAULT OR NEGLIGENCE OF OR BY BUYER, (III) USE OF THE PRODUCTS IN A MANNER FOR WHICH THEY WERE NOT DESIGNED, OR (IV) IMPROPER STORAGE AND HANDLING OF THE PRODUCTS. Unless otherwise expressly stated on the Product or in the documentation accompanying the Product, the Product is intended for research only and is not to be used for any other purpose, including without limitation, unauthorized commercial uses, in vitro diagnostic uses, ex vivo or in vivo therapeutic uses, or any type of consumption by or application to human or animals.