

# ZEB1 Polyclonal Antibody

Product Details	
Size	100 µL
Species Reactivity	Human
Published Species	Human, Mouse
Host/Isotype	Rabbit / IgG
Class	Polyclonal
Type	Antibody
Conjugate	Unconjugated
Immunogen	Recombinant protein corresponding to Human ZEB1
Form	Liquid
Concentration	0.3 mg/mL
Purification	Anitgen affinity chromatography
Storage buffer	PBS, pH 7.2, with 40% glycerol
Contains	0.02% sodium azide
Storage conditions	Store at 4°C short term. For long term storage, store at -20°C, avoiding freeze/thaw cycles.
RRID	AB_2790138

Applications	Tested Dilution	Publications
Western Blot (WB)	-	1 Publication
Immunohistochemistry (IHC)	1:500-1:1,000	1 Publication
Immunocytochemistry (ICC/IF)	0.25-2 µg/mL	1 Publication
In vitro Assay (IV)	-	1 Publication

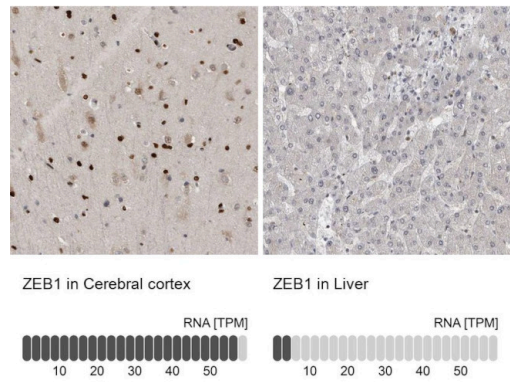
## Product Specific Information

Immunogen sequence: EAEKPESSVS SATGDGNLSP SQPPLKNLLS LLKAYYALNA QPSAEELSKI ADSVNLPLDV VKKWF EKMQA GQISVQSSEP SSPEPGKVNI PAKNNDQPQS ANANEPQDST VNLQSPLKMT NSPVLPVGST

Product Images For ZEB1 Polyclonal Antibody

ZEB1 Antibody (PA5-82982)

Relative expression in different tissues in IHC: Detection of differential expression levels of ZEB1 demonstrates antibody specificity. Immunohistochemical analysis of ZEB1 using anti-ZEB1 Polyclonal Antibody (Product #PA5-82982), shows significant staining of ZEB1 in cerebral cortex and shows minimal or weak staining in liver tissues. The relative expression levels of ZEB1 within each tissue is shown using RNA-Seq. {RE}



Western Blot (1)

Science advances	Year 2022
Phenotypic heterogeneity driven by plasticity of the intermediate EMT state governs disease progression and metastasis in breast cancer.	Species Human Mouse
"PA5-82982 was used in Western Blotting to develop an advanced multiplexed immunostaining approach using SUM149-derived orthotopic tumors and find that the EMT state and epithelial-mesenchymal heterogeneity are predictive of overall survival in a cohort of stage III breast cancer."	Dilution 1:2000 1:2000
Authors: Brown MS,Abdollahi B,Wilkins OM,Lu H,Chakraborty P,Ognjenovic NB,Muller KE,Jolly MK,Christensen BC,Hassanpour S,Pattabiraman DR	

Immunohistochemistry (1)

Nature communications	Year 2022
An atlas of late prenatal human neurodevelopment resolved by single-nucleus transcriptomics.	Species Human
"PA5-82982 was used in Immunohistochemistry-immunofluorescence to present a comprehensive single-nucleus RNA sequencing atlas of over 200,000 nuclei derived from the proliferative germinal matrix and laminating cortical plate of 15 prenatal, non-pathological postmortem samples from 17 to 41 gestational weeks, and 3 adult controls."	Dilution 1:500
Authors: Ramos SI,Mussa ZM,Falk EN,Pai B,Giotti B,Allette K,Cai P,Dekio F,Sebra R,Beaumont KG,Tsankov AM,Tsankova NM	

Immunocytochemistry (1)

Nature communications	Year 2022
An atlas of late prenatal human neurodevelopment resolved by single-nucleus transcriptomics.	Species Human
"PA5-82982 was used in Immunohistochemistry-immunofluorescence to present a comprehensive single-nucleus RNA sequencing atlas of over 200,000 nuclei derived from the proliferative germinal matrix and laminating cortical plate of 15 prenatal, non-pathological postmortem samples from 17 to 41 gestational weeks, and 3 adult controls."	Dilution 1:500
Authors: Ramos SI,Mussa ZM,Falk EN,Pai B,Giotti B,Allette K,Cai P,Dekio F,Sebra R,Beaumont KG,Tsankov AM,Tsankova NM	

In vitro Assay (1)

Science advances	Year 2022
Phenotypic heterogeneity driven by plasticity of the intermediate EMT state governs disease progression and metastasis in breast cancer.	Species Human Mouse
"PA5-82982 was used in Western Blotting to develop an advanced multiplexed immunostaining approach using SUM149-derived orthotopic tumors and find that the EMT state and epithelial-mesenchymal heterogeneity are predictive of overall survival in a cohort of stage III breast cancer."	Dilution 1:2000 1:2000
Authors: Brown MS,Abdollahi B,Wilkins OM,Lu H,Chakraborty P,Ognjenovic NB,Muller KE,Jolly MK,Christensen BC,Hassanpour S,Pattabiraman DR	

For Research Use Only. Not for use in diagnostic procedures. Not for resale without express authorization. Products are warranted to operate or perform substantially in conformance with published Product specifications in effect at the time of sale, as set forth in the Production documentation, specifications and/or accompanying package inserts ("Documentation"). No claim of suitability for use in applications regulated by FDA is made. The warranty provided herein is valid only when used by properly trained individuals. Unless otherwise stated in the Documentation, this warranty is limited to one year from date of shipment when the Product is subjected to normal, proper and intended usage. This warranty does not extend to anyone other than the Buyer. Any model or sample furnished to Buyer is merely illustrative of the general type and quality of goods and does not represent that any Product will conform to such model or sample. NO OTHER WARRANTIES, EXPRESS OR IMPLIED, ARE GRANTED INCLUDING WITHOUT LIMITATION, IMPLIED WARRANTIES OF MERCHANTABILITY, FITNESS FOR ANY PARTICULAR PURPOSE, OR NON INFRINGEMENT. BUYER'S EXCLUSIVE REMEDY FOR NON-CONFORMING PRODUCTS DURING THE WARRANTY PERIOD IS LIMITED TO REPAIR, REPLACEMENT OF OR REFUND FOR THE NON-CONFORMING PRODUCT(S) AT SELLER'S SOLE OPTION. THERE IS NO OBLIGATION TO REPAIR, REPLACE OR REFUND FOR PRODUCTS AS THE RESULT OF (i) ACCIDENT, DISASTER OR EVENT OF FORCE MAJEURE, (ii) MISUSE, FAULT OR NEGLIGENCE OF OR BY BUYER, (iii) USE OF THE PRODUCTS IN A MANNER FOR WHICH THEY WERE NOT DESIGNED, OR (iv) IMPROPER STORAGE AND HANDLING OF THE PRODUCTS. Unless otherwise expressly stated on the Product or in the documentation accompanying the Product, the Product is intended for research only and is not to be used for any other purpose, including without limitation, unauthorized commercial uses, in vitro diagnostic uses, ex vivo or in vivo therapeutic uses, or any type of consumption by or application to human or animals.