

KIAA1429 Polyclonal Antibody

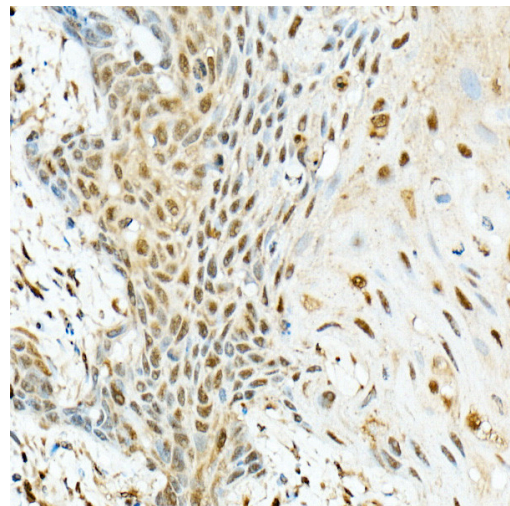
Product Details	
Size	100 µL
Species Reactivity	Human, Mouse, Rat
Published Species	Human
Host/Isotype	Rabbit / IgG
Class	Polyclonal
Type	Antibody
Conjugate	Unconjugated
Immunogen	Recombinant fusion protein containing a sequence corresponding to amino acids 1400-1700 of human KIAA1429 (NP_0563112)
Form	Liquid
Concentration	2.08 mg/mL
Purification	Affinity Chromatography
Storage buffer	PBS, pH 7.3, with 50% glycerol
Contains	0.05% ProClin 300
Storage conditions	-20° C, Avoid Freeze/Thaw Cycles
RRID	AB_2807519

Applications	Tested Dilution	Publications
Western Blot (WB)	1:1,000-1:5,000	2 Publications
Immunohistochemistry (Paraffin) (IHC (P))	1:50-1:100	-
Immunocytochemistry (ICC/IF)	1:50-1:100	-
RNA Immunoprecipitation (RIP)	-	1 Publication

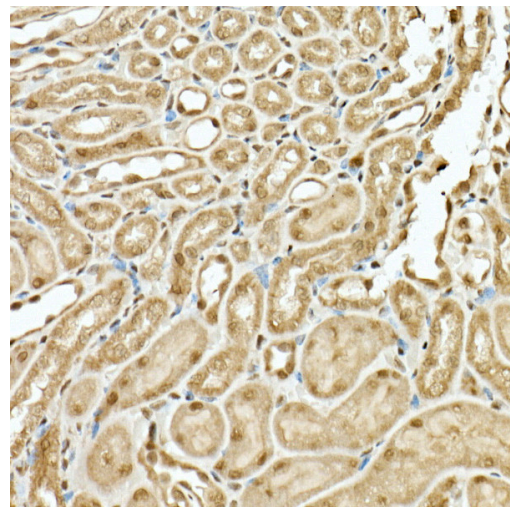
Product Specific Information

Immunogen sequence: FMRQILNSDT IGCCGDDNGL MEVEGAHTSR TMSINAAELK QLLQSKEESP ENLFLELEKL VLEHSKDDDN LDSLLDSVVG LKQMLESSGD PLPLSDQDVE PVLSAPESLQ NLFNNRTAYV LADVMDQLK SMWFTPFQAE EIDTDLDLVK VDLIELSEKC CSDFDLHSEL ERSFLSEPSS PGRTKTTKGF KLGKHKHETF ITSSGKSEYI EPAKRAHVVP PPRGRGRGGF GQGIRPHDIF RQRKQNTSRP PSMHVDDFVA AESKEVVPQD GIPPPKRPLK VSQKISSRGG FSGNRGGRGA F; Positive Samples: K-562, COS7, HeLa, PC-3

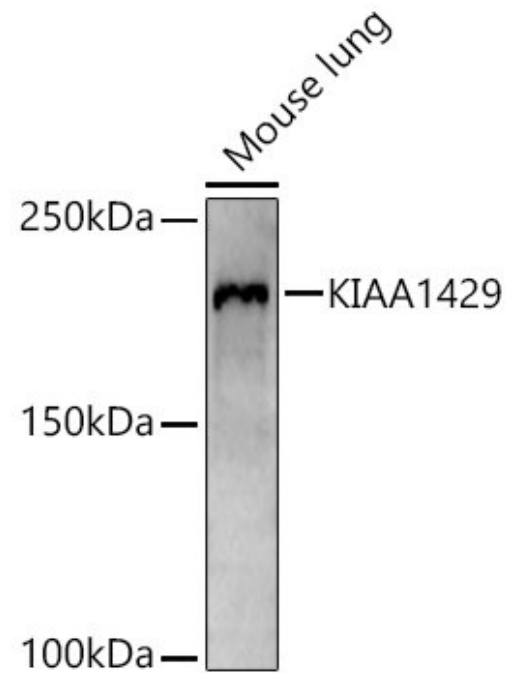
Product Images For KIAA1429 Polyclonal Antibody



KIAA1429 Antibody (PA5-95717) in IHC (P)
Immunohistochemistry analysis of KIAA1429 in paraffin-embedded human esophageal cancer. Samples were incubated with KIAA1429 Polyclonal antibody (Product # PA5-95717) using a dilution of 1:200 (40x lens). Perform high pressure antigen retrieval with 10 mM citrate buffer pH 6.0 before commencing with IHC staining protocol.



KIAA1429 Antibody (PA5-95717) in IHC (P)
Immunohistochemistry analysis of KIAA1429 in paraffin-embedded mouse kidney. Samples were incubated with KIAA1429 Polyclonal antibody (Product # PA5-95717) using a dilution of 1:200 (40x lens). Perform high pressure antigen retrieval with 10 mM citrate buffer pH 6.0 before commencing with IHC staining protocol.



KIAA1429 Antibody (PA5-95717) in WB
Western blot analysis of KIAA1429 in extracts of Mouse lung. Samples were incubated with KIAA1429 Polyclonal antibody (Product # PA5-95717) using a dilution of 1:2,000, followed by HRP Goat Anti-Rabbit IgG (H+L) at a dilution of 1:10,000. Lysates/proteins: 25 µg per lane. Blocking buffer: 3% nonfat dry milk in TBST. Detection: ECL Basic Kit. Exposure time: 30s.

View more figures on thermofisher.cn

Western Blot (2)

Cancers	Year 2022
m⁶A Methyltransferase KIAA1429 Regulates the Cisplatin Sensitivity of Gastric Cancer Cells via Stabilizing FOXM1 mRNA.	
"Published figure using KIAA1429 polyclonal antibody (Product # PA5-95717) in Western Blot"	
Authors: Zhu Z,Zhou Y,Chen Y,Zhou Z,Liu W,Zheng L,Pei Q,Tan F,Pei H,Li Y	
Cell death discovery	Year 2021
N⁶-methyladenosine (m⁶A) methyltransferase KIAA1429 accelerates the gefitinib resistance of non-small-cell lung cancer.	Species Human
"Published figure using KIAA1429 polyclonal antibody (Product # PA5-95717) in Western Blot"	Dilution 1:1000
Authors: Tang J,Han T,Tong W,Zhao J,Wang W	

RNA Immunoprecipitation (1)

Cell death discovery	Year 2022
m⁶A methyltransferase KIAA1429 acts as an oncogenic factor in colorectal cancer by regulating SIRT1 in an m⁶A-dependent manner.	Species Human
"PA5-95717 was used in RNA Immunoprecipitation to suggest that the m6A methyltransferase KIAA1429 promotes the growth and motility of colorectal cancer and could be a potent therapeutic target."	
Authors: Zhou Y,Pei Z,Maimaiti A,Zheng L,Zhu Z,Tian M,Zhou Z,Tan F,Pei Q,Li Y,Liu W	

For Research Use Only. Not for use in diagnostic procedures. Not for resale without express authorization. Products are warranted to operate or perform substantially in conformance with published Product specifications in effect at the time of sale, as set forth in the Production documentation, specifications and/or accompanying package inserts ("Documentation"). No claim of suitability for use in applications regulated by FDA is made. The warranty provided herein is valid only when used by properly trained individuals. Unless otherwise stated in the Documentation, this warranty is limited to one year from date of shipment when the Product is subjected to normal, proper and intended usage. This warranty does not extend to anyone other than the Buyer. Any model or sample furnished to Buyer is merely illustrative of the general type and quality of goods and does not represent that any Product will conform to such model or sample. NO OTHER WARRANTIES, EXPRESS OR IMPLIED, ARE GRANTED INCLUDING WITHOUT LIMITATION, IMPLIED WARRANTIES OF MERCHANTABILITY, FITNESS FOR ANY PARTICULAR PURPOSE, OR NON-INFRINGEMENT. BUYER'S EXCLUSIVE REMEDY FOR NON-CONFORMING PRODUCTS DURING THE WARRANTY PERIOD IS LIMITED TO REPAIR, REPLACEMENT OF OR REFUND FOR THE NON-CONFORMING PRODUCT(S) AT SELLER'S SOLE OPTION. THERE IS NO OBLIGATION TO REPAIR, REPLACE OR REFUND FOR PRODUCTS AS THE RESULT OF (I) ACCIDENT, DISASTER OR EVENT OF FORCE MAJEURE, (II) MISUSE, FAULT OR NEGLIGENCE OF OR BY BUYER, (III) USE OF THE PRODUCTS IN A MANNER FOR WHICH THEY WERE NOT DESIGNED, OR (IV) IMPROPER STORAGE AND HANDLING OF THE PRODUCTS. Unless otherwise expressly stated on the Product or in the documentation accompanying the Product, the Product is intended for research only and is not to be used for any other purpose, including without limitation, unauthorized commercial uses, in vitro diagnostic uses, ex vivo or in vivo therapeutic uses, or any type of consumption by or application to human or animals.