

MDC1 Polyclonal Antibody

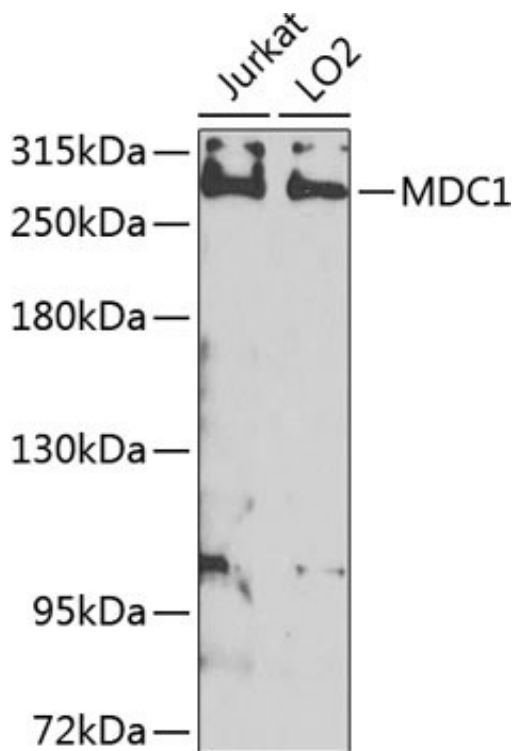
Product Details	
Size	100 µL
Species Reactivity	Human
Published Species	Human
Host/Isotype	Rabbit / IgG
Class	Polyclonal
Type	Antibody
Conjugate	Unconjugated
Immunogen	Recombinant fusion protein containing a sequence corresponding to amino acids 1-350 of human MDC1 (NP_0554562)
Form	Liquid
Concentration	0.28 mg/mL
Purification	Affinity Chromatography
Storage buffer	PBS, pH 7.3, with 50% glycerol
Contains	0.02% sodium azide
Storage conditions	-20° C, Avoid Freeze/Thaw Cycles
RRID	AB_2808824

Applications	Tested Dilution	Publications
Western Blot (WB)	1:500-1:2,000	1 Publication
Immunohistochemistry (Paraffin) (IHC (P))	1:50-1:200	-
Immunocytochemistry (ICC/IF)	1:50-1:200	-

Product Specific Information

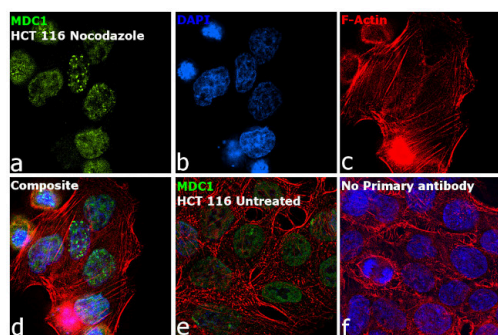
Immunogen sequence: MEDTQAIDWD VEEEEETEQS SESLRCNVEP VGR LHIFSGA HGPEKDFPLH LGKNVVGRMP DCSVALPFPS ISKQHAEIEI LAWDKAPILR DCGSLNGTQI LRPPKVLSPG VSHRLRDQEL ILFADLLCQY HRLDVSLPFV SRGPLTVEET PRVQGETQPQ RLLAEDSEE EVDFLSERRM VKKSRTTSSS VIVPESDEEG HSPVLGGLGP PFAFNLNSDT DVEEGQQPAT EEASSAARRG ATVEAKQSEA EVVTEIQLEK DQPLVKERDN DTKVKRGAGN GVPAGVILE RSQPPGEDSD TDVDDDSRPP GRPAEVHLER AQPFGFIDSD TDAEEERIPA TPVVIPMKKR; Positive Samples: Jurkat, LO2; Cellular Location: Chromosome, Nucleus

Product Images For MDC1 Polyclonal Antibody



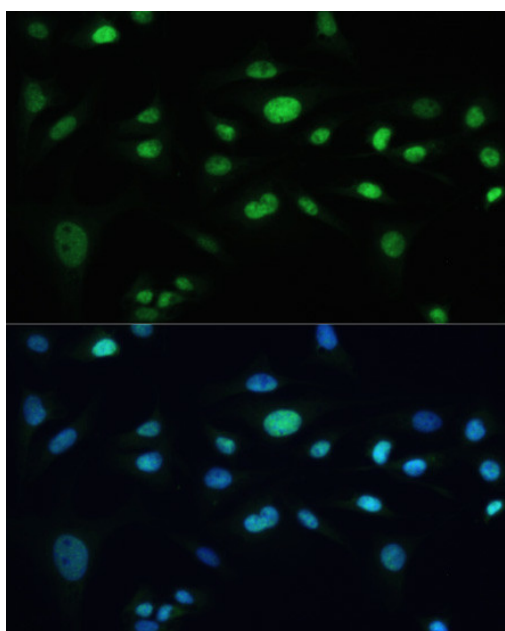
MDC1 Antibody (PA5-97022) in WB

Western blot analysis of MDC1 in extracts of various cell lines. Samples were incubated with MDC1 Polyclonal antibody (Product # PA5-97022) using a dilution of 1:1,000, followed by HRP Goat Anti-Rabbit IgG (H+L) at a dilution of 1:10,000. Lysates/proteins: 25 µg per lane. Blocking buffer: 3% nonfat dry milk in TBST. Detection: ECL Enhanced Kit. Exposure time: 5s.



MDC1 Antibody (PA5-97022) in ICC/IF

Immunofluorescence analysis of Mediator of DNA damage checkpoint protein 1 was performed using 70% confluent log phase HCT 116 Nocodazole treated (200 nmol/L for 16hrs). The cells were fixed with 4% paraformaldehyde for 10 minutes, permeabilized with 0.1% Triton™ X-100 for 15 minutes, and blocked with 2% BSA for 45 minutes at room temperature. The cells were labeled with MDC1 Polyclonal Antibody (Product # PA5-97022) at 1:100 in 0.1% BSA, incubated at 4 degree celsius overnight, and then labeled with Donkey anti-Rabbit IgG (H+L) Highly Cross-Adsorbed Secondary Antibody, Alexa Fluor Plus 488 (Product # A32790), (1:2000 dilution), for 45 minutes at room temperature (Panel a: Green). Nuclei (Panel b: Blue) were stained with ProLong™ Diamond Antifade Mountant with DAPI (Product # P36962). F-actin (Panel c: Red) was stained with Rhodamine Phalloidin (Product # R415, 1:300). Panel d represents the merged image showing Nuclear foci localization. Panel e represents untreated cells with nuclear localization. Panel f represents control cells with no primary antibody to assess the background. The images were captured at 60X magnification.



MDC1 Antibody (PA5-97022) in ICC/IF

Immunofluorescence analysis of MDC1 in U-2 OS cells. Samples were incubated with MDC1 Polyclonal antibody (Product # PA5-97022) using a dilution of 1:100. Blue: DAPI for nuclear staining.

View more figures on thermofisher.cn

1 Reference

Western Blot (1)

International journal of molecular sciences	Year 2021
O-GlcNAcylation Affects the Pathway Choice of DNA Double-Strand Break Repair.	Species Human
"PA5-97022 was used in Western Blot to study the role of the post-translational modification, O-linked -N-acetylglucosaminylation, on the cellular DNA damage response."	Dilution 1:1000
Authors: Averbek S,Jakob B,Durante M,Averbeck NB	

For Research Use Only. Not for use in diagnostic procedures. Not for resale without express authorization. Products are warranted to operate or perform substantially in conformance with published Product specifications in effect at the time of sale, as set forth in the Production documentation, specifications and/or accompanying package inserts ("Documentation"). No claim of suitability for use in applications regulated by FDA is made. The warranty provided herein is valid only when used by properly trained individuals. Unless otherwise stated in the Documentation, this warranty is limited to one year from date of shipment when the Product is subjected to normal, proper and intended usage. This warranty does not extend to anyone other than the Buyer. Any model or sample furnished to Buyer is merely illustrative of the general type and quality of goods and does not represent that any Product will conform to such model or sample. NO OTHER WARRANTIES, EXPRESS OR IMPLIED, ARE GRANTED INCLUDING WITHOUT LIMITATION, IMPLIED WARRANTIES OF MERCHANTABILITY, FITNESS FOR ANY PARTICULAR PURPOSE, OR NON INFRINGEMENT. BUYER'S EXCLUSIVE REMEDY FOR NON-CONFORMING PRODUCTS DURING THE WARRANTY PERIOD IS LIMITED TO REPAIR, REPLACEMENT OF OR REFUND FOR THE NON-CONFORMING PRODUCT(S) AT SELLER'S SOLE OPTION. THERE IS NO OBLIGATION TO REPAIR, REPLACE OR REFUND FOR PRODUCTS AS THE RESULT OF (I) ACCIDENT, DISASTER OR EVENT OF FORCE MAJEURE, (II) MISUSE, FAULT OR NEGLIGENCE OF OR BY BUYER, (III) USE OF THE PRODUCTS IN A MANNER FOR WHICH THEY WERE NOT DESIGNED, OR (IV) IMPROPER STORAGE AND HANDLING OF THE PRODUCTS. Unless otherwise expressly stated on the Product or in the documentation accompanying the Product, the Product is intended for research only and is not to be used for any other purpose, including without limitation, unauthorized commercial uses, in vitro diagnostic uses, ex vivo or in vivo therapeutic uses, or any type of consumption by or application to human or animals.