

Rabbit anti-Goat IgG (H+L) Cross-Adsorbed Secondary Antibody, Alexa Fluor™ 633

Product Details	
Size	1 mg
Species Reactivity	Goat
Host/Isotype	Rabbit / IgG
Class	Polyclonal
Type	Secondary Antibody
Conjugate	Alexa Fluor™ 633
Excitation/Emission Max	631/650 nm
Immunogen	Gamma Immunoglobins Heavy and Light chains
Form	liquid
Concentration	2 mg/mL
Purification	purified
Storage buffer	PBS, pH 7.5
Contains	5mM sodium azide
Storage conditions	4° C, store in dark
RRID	AB_2535743

Applications	Tested Dilution	Publications
Western Blot (WB)	1:3,000-1:10,000	0 Publication
Immunohistochemistry (IHC)	1-10 µg/mL	0 Publication
Immunohistochemistry (Paraffin) (IHC (P))	-	0 Publication
Immunocytochemistry (ICC/IF)	1-10 µg/mL	0 Publication
Flow Cytometry (Flow)	1-10 µg/mL	0 Publication
ELISA (ELISA)	-	0 Publication
Miscellaneous PubMed (Misc)	-	0 Publication

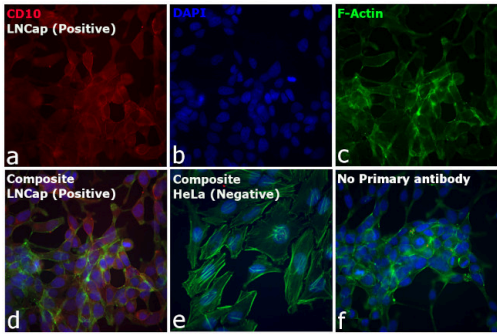
Product Specific Information

Fluorescence of this long-wavelength Alexa Fluor dye is not visible by looking through a conventional fluorescence microscope.

Product will be shipped at Room Temperature.

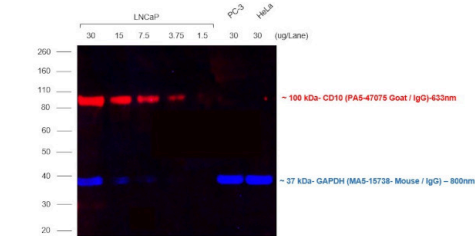
Goat IgG (H+L) Cross-Adsorbed Secondary Antibody (A-21086) in ICC/IF

Immunofluorescence analysis of Rabbit anti-Goat IgG (H+L) Cross-Adsorbed Secondary Antibody, Alexa Fluor™ 633 (Product # A-21086) was performed using LNCaP (positive model) and HeLa (negative model) cells stained with CD10 Polyclonal Antibody (Product # PA5-47075). The cells were fixed with 4% paraformaldehyde for 10 minutes, permeabilized with 0.1% Triton™ X-100 for 15 minutes, blocked with 2% BSA for 1 hour and labeled with 1:50 dilution of primary antibody overnight at 4C. Rabbit anti-Goat IgG (H+L) Cross-Adsorbed Secondary Antibody, Alexa Fluor™ 633 (Product # A-21086, 1:2,000) in 0.1% BSA in PBS for 1 hour at room temperature, was used for detection of CD10 on the cell membrane and trans-golgi network (Panel a: red). Nuclei (Panel b: blue) were stained with Hoechst33342 (Product # H1399). F-actin was stained with Alexa Fluor® 488 Phalloidin (Product # A12379, 1:500) (Panel c: green). Panel d represents the composite image. The specificity of the secondary antibody was proved by the absence of signal in HeLa (negative model for CD10) due to no primary antibody binding (Panel e). Non-specific staining was not observed with secondary antibody alone (panel f). The images were captured at 40X magnification in CellInsight CX7 LZR High-Content Screening (HCS) Platform (Product # CX7A1110LZR).



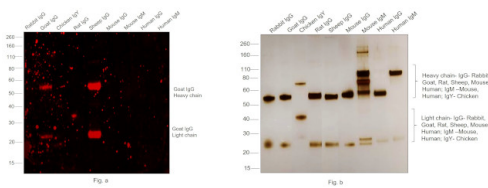
Goat IgG (H+L) Cross-Adsorbed Secondary Antibody (A-21086) in WB

Multiplexing fluorescent western blot was performed using Rabbit anti-Goat IgG (H+L) Cross-Adsorbed Secondary Antibody, Alexa Fluor™ 633 (Product # A-21086). Whole cell extracts of LNCaP (Lane 1, 2, 3, 4, 5), PC-3 (Lane 6) and HeLa (Lane 7) are electrophoresed using NuPAGE™ 4-12% Bis-Tris Protein Gel (Product # NP03222BOX). Resolved proteins were transferred onto a Low-Fluorescence PVDF Transfer Membranes, 0.2 m 7 x 8.4 cm (Product # 22860) by iBlot® 2 Dry Blotting System (Product # IB21001) and blocked using Blocker™ FL Fluorescent Blocking Buffer (10X) (Product # 37565). The blot was probed with CD10 Goat IgG Polyclonal Antibody (Product # PA5-47075), and GAPDH Monoclonal Antibody (Product # MA5-15738). Secondary antibodies (Product # A-21086, 1:10,000), and (Product # A32789, 1:10,000) were used for detection of CD10, and GAPDH respectively. Fluorescent detection was performed using iBright™ FL1500 (Product # A44115). The anti-goat secondary antibody (Product # A-21086) specifically detects the goat primary antibody.



Goat IgG (H+L) Cross-Adsorbed Secondary Antibody (A-21086) in WB

Western blot was performed using Rabbit anti-Goat IgG (H+L) Cross-Adsorbed Secondary Antibody, Alexa Fluor™ 633 (Product # A-21086) and ~55 kDa band and ~25 kDa bands corresponding to Heavy and Light Chain were observed in Goat IgG but not in Rabbit IgG, Chicken IgY, Rat IgG, Mouse IgG, Mouse IgM, Human IgG and Human IgM. Purified protein (500 ng) of Rabbit IgG (Lane 1), Goat IgG (Lane 2), Chicken IgY (Lane 3), Rat IgG (Lane 4), Sheep IgG (Lane 5), Mouse IgG (Lane 6), Mouse IgM (Lane 7), Human IgG (Lane 8), Human IgM (Lane 9) (Fig. a) were electrophoresed using NuPAGE™ 4-12% Bis-Tris Protein Gel (Product # NP0321BOX). Resolved proteins were then transferred onto a nitrocellulose membrane (Product # IB23001) by iBlot® 2 Dry Blotting System (Product # IB21001). The blot was probed with Rabbit anti-Goat IgG (H+L) Cross-Adsorbed Secondary Antibody, Alexa Fluor™ 633 (Product # A-21086, 1:3,000) and detected using the iBright™ FL1500 (Product # A44115). Silver staining was performed to establish equivalent loading of purified proteins using the Pierce™ Silver Stain Kit (Product # 24612) (Fig. b). The anti-goat secondary antibody (Product # A-11078) shows cross reactivity with sheep IgG.



21 References

Increased Galectin-9 Levels Correlate with Disease Activity in Patients with DMARD-Naïve Rheumatoid Arthritis and Modulate the Secretion of MCP-1 and IL-6 from Synovial Fibroblasts. Cells (2023)

Galectin-3 Decreases 4-1BBL Bioactivity by Crosslinking Soluble and Membrane Expressed 4-1BB. Front Immunol (2022)

Biodistribution and Cellular Internalization of Inactivated SARS-CoV-2 in Wild-Type Mice. Int J Mol Sci (2022)

Reconstituted basement membrane enables airway epithelium modeling and nanoparticle toxicity testing. Int J Biol Macromol (2022)

A histone modifier, ASXL1, interacts with NONO and is involved in paraspeckle formation in hematopoietic cells. Cell Rep (2021)

For Research Use Only. Not for use in diagnostic procedures. Not for resale without express authorization. Products are warranted to operate or perform substantially in conformance with published Product specifications in effect at the time of sale, as set forth in the Production documentation, specifications and/or accompanying package inserts ("Documentation"). No claim of suitability for use in applications regulated by FDA is made. The warranty provided herein is valid only when used by properly trained individuals. Unless otherwise stated in the Documentation, this warranty is limited to one year from date of shipment when the Product is subjected to normal, proper and intended usage. This warranty does not extend to anyone other than the Buyer. Any model or sample furnished to Buyer is merely illustrative of the general type and quality of goods and does not represent that any Product will conform to such model or sample. NO OTHER WARRANTIES, EXPRESS OR IMPLIED, ARE GRANTED INCLUDING WITHOUT LIMITATION, IMPLIED WARRANTIES OF MERCHANTABILITY, FITNESS FOR ANY PARTICULAR PURPOSE, OR NON INFRINGEMENT. BUYER'S EXCLUSIVE REMEDY FOR NON-CONFORMING PRODUCTS DURING THE WARRANTY PERIOD IS LIMITED TO REPAIR, REPLACEMENT OF OR REFUND FOR THE NON-CONFORMING PRODUCT(S) AT SELLER'S SOLE OPTION. THERE IS NO OBLIGATION TO REPAIR, REPLACE OR REFUND FOR PRODUCTS AS THE RESULT OF (i) ACCIDENT, DISASTER OR EVENT OF FORCE MAJEURE, (ii) MISUSE, FAULT OR NEGLIGENCE OF OR BY BUYER, (iii) USE OF THE PRODUCTS IN A MANNER FOR WHICH THEY WERE NOT DESIGNED, OR (iv) IMPROPER STORAGE AND HANDLING OF THE PRODUCTS. Unless otherwise expressly stated on the Product or in the documentation accompanying the Product, the Product is intended for research only and is not to be used for any other purpose, including without limitation, unauthorized commercial uses, in vitro diagnostic uses, ex vivo or in vivo therapeutic uses, or any type of consumption by or application to human or animals.