

# Rabbit anti-Goat IgG (Heavy Chain), Superclonal™ Recombinant Secondary Antibody

Product Details	
Size	1 mg
Species Reactivity	Goat
Host/Isotype	Rabbit / IgG
Expression system	Expi293
Class	Recombinant Polyclonal
Type	Secondary Antibody
Conjugate	Unconjugated
Immunogen	Recombinant full-length protein
Form	Liquid
Concentration	1 mg/mL
Purification	Protein A
Storage buffer	PBS
Contains	0.09% sodium azide
Storage conditions	Store at 4°C short term. For long term storage, store at -20°C, avoiding freeze/thaw cycles.
RRID	AB_2536076

Applications	Tested Dilution	Publications
Western Blot (WB)	0.05-1 µg/mL	-
Immunocytochemistry (ICC/IF)	0.1-1 µg/mL	-
ELISA (ELISA)	0.01-0.5 µg/mL	-

## Product Specific Information

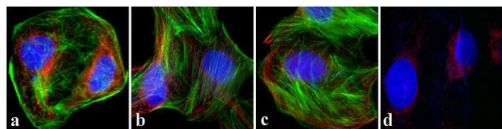
The sensitivity and specificity of each lot is confirmed using ELISA.

Minimal cross-reactivity with mouse, rat, human, bovine, guinea pig, and donkey IgG is observed.

Recombinant rabbit polyclonal antibodies are unique offerings from Thermo Fisher Scientific. They are comprised of a selection of multiple different recombinant monoclonal antibodies, providing the best of both worlds - the sensitivity of polyclonal antibodies with the specificity of monoclonal antibodies - all delivered with the consistency only found in a recombinant antibody. While functionally the same as a polyclonal antibody - recognizing multiple epitope sites on the target and producing higher detection sensitivity for low abundance targets - a recombinant rabbit polyclonal antibody has a known mixture of light and heavy chains. The exact population can be produced in every lot, circumventing the biological variability typically associated with polyclonal antibody production.

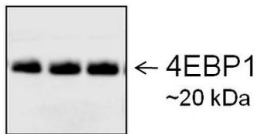
Goat IgG (Heavy Chain) Secondary Antibody (A27011) in ICC/IF

Smooth muscle Actin (green) in U2OS human osteocarcinoma cells was labeled with Goat anti-alpha-smooth muscle Actin primary antibody, Rabbit anti-Goat IgG (Heavy Chain) Superclonal™ Secondary Antibody, Unconjugated (Product # A27011) (0.4 µg/mL, 1:2500) and visualized using Alexa Fluor® 488 Goat anti-Rabbit IgG (Heavy Chain) as tertiary antibody (Product # A-11008) (1:400). Nuclei (blue) were stained with SlowFade® Gold Antifade Mountant using DAPI (Product # S36938) (1:50). F-actin (red) was stained with Alexa Fluor® 594 Phalloidin (Product # A12381) (1:200). Representative images with 3 lots of Rabbit anti-Goat IgG (Heavy Chain) Superclonal™ Secondary Antibody, Unconjugated (Product # A27011) for lot-to-lot consistency (panel a-c) of performance and no primary control (panel d) to assess background are shown.



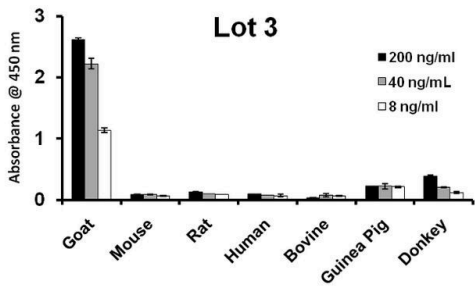
Goat IgG (Heavy Chain) Secondary Antibody (A27011) in WB

Endogenous 4EBP1 was detected at 20 KDa using Goat anti-4EBP1 primary antibody and Rabbit anti-Goat IgG (Heavy Chain) Superclonal Secondary Antibody, Unconjugated (Product # A27011) (0.4 µg/mL, 1:2500). Goat anti-Rabbit IgG Heavy Chain, HRP conjugate as the tertiary Antibody (G21234) (1:3000). Western blot analysis was performed on whole cell extracts (30 µg lysate) of HeLa human cervical carcinoma cells (lane 1-3) using the Xcell Surelock Electrophoresis system and iBlot® Dry Blotting System. Chemiluminescence was detected using the Pierce™ ECL Western Blotting Substrate (Product # 32106).



Goat IgG (Heavy Chain) Secondary Antibody (A27011) in ELISA

ELISA was performed using purified IgG from different species to determine the cross-reactivity and lot-to-lot consistency of Rabbit anti-Goat IgG (Heavy Chain) Superclonal™ Secondary Antibody, Unconjugated (Product # A27011). Goat IgG (GT003), Mouse IgG (Product # 10400C), Rat IgG (Product # 10700), Human IgG (Product # 12000C), Bovine IgG (Bo003), Guinea Pig IgG (Gp003) and Donkey IgG (Dk-003-B) were coated onto the plate (coating conc 0.02 µg/mL). Three point dilution of Rabbit anti-Goat IgG (Heavy Chain) Superclonal™ Secondary Antibody, Unconjugated (Product # A27011) was used to determine the cross-reactivity of three lots around the EC50 (40 ng/mL) of binding to the target antigen (Goat IgG). Goat anti-Rabbit HRP (Product # A16104, 1:5000) was used as the detector antibody.



View more figures on [thermofisher.cn](https://thermofisher.cn)

## 6 References

Intratumoral Heterogeneity and Immune Modulation in Lung Adenocarcinoma in Female Smokers and Never Smokers. *Cancer Res* (2022)

Stem Cell Factor-Inducible MITF-M Expression in Therapeutics for Acquired Skin Hyperpigmentation. *Theranostics* (2020)

Nuclear Entry of CRTC1 as Druggable Target of Acquired Pigmentary Disorder. *Theranostics* (2019)

Tlr2 Deficiency is Associated with Enhanced Elements of Neuronal Repair and Caspase 3 Activation Following Brain Ischemia. *Sci Rep* (2019)

Melittin induces NSCLC apoptosis via inhibition of miR-183. *Onco Targets Ther* (2018)

For Research Use Only. Not for use in diagnostic procedures. Not for resale without express authorization. Products are warranted to operate or perform substantially in conformance with published Product specifications in effect at the time of sale, as set forth in the Production documentation, specifications and/or accompanying package inserts ("Documentation"). No claim of suitability for use in applications regulated by FDA is made. The warranty provided herein is valid only when used by properly trained individuals. Unless otherwise stated in the Documentation, this warranty is limited to one year from date of shipment when the Product is subjected to normal, proper and intended usage. This warranty does not extend to anyone other than the Buyer. Any model or sample furnished to Buyer is merely illustrative of the general type and quality of goods and does not represent that any Product will conform to such model or sample. NO OTHER WARRANTIES, EXPRESS OR IMPLIED, ARE GRANTED INCLUDING WITHOUT LIMITATION, IMPLIED WARRANTIES OF MERCHANTABILITY, FITNESS FOR ANY PARTICULAR PURPOSE, OR NON INFRINGEMENT. BUYER'S EXCLUSIVE REMEDY FOR NON-CONFORMING PRODUCTS DURING THE WARRANTY PERIOD IS LIMITED TO REPAIR, REPLACEMENT OF OR REFUND FOR THE NON-CONFORMING PRODUCT(S) AT SELLER'S SOLE OPTION. THERE IS NO OBLIGATION TO REPAIR, REPLACE OR REFUND FOR PRODUCTS AS THE RESULT OF (I) ACCIDENT, DISASTER OR EVENT OF FORCE MAJEURE, (II) MISUSE, FAULT OR NEGLIGENCE OF OR BY BUYER, (III) USE OF THE PRODUCTS IN A MANNER FOR WHICH THEY WERE NOT DESIGNED, OR (IV) IMPROPER STORAGE AND HANDLING OF THE PRODUCTS. Unless otherwise expressly stated on the Product or in the documentation accompanying the Product, the Product is intended for research only and is not to be used for any other purpose, including without limitation, unauthorized commercial uses, in vitro diagnostic uses, ex vivo or in vivo therapeutic uses, or any type of consumption by or application to human or animals.