

Rabbit anti-Human IgD (Heavy chain) Secondary Antibody

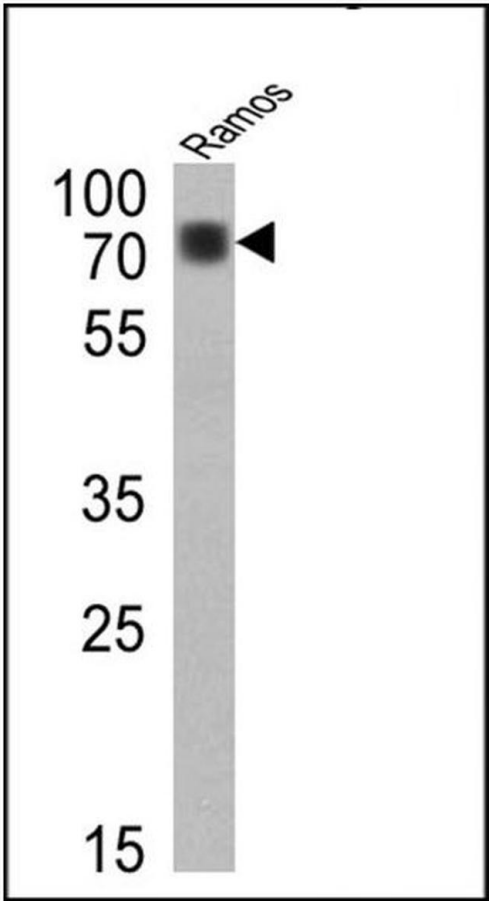
Product Details	
Size	500 µL
Species Reactivity	Human
Host/Isotype	Rabbit / IgG
Class	Polyclonal
Type	Secondary Antibody
Conjugate	Unconjugated
Immunogen	IgD isolated from a pool of normal human sera
Form	Liquid
Purification	Ig fraction
Storage buffer	PBS, pH 7.4, with 0.2% BSA
Contains	0.09% sodium azide
Storage conditions	4° C
RRID	AB_10982833

Applications	Tested Dilution	Publications
Western Blot (WB)	1:100-1:1,000	-
Immunohistochemistry (Paraffin) (IHC (P))	1:500-1:1,000	-

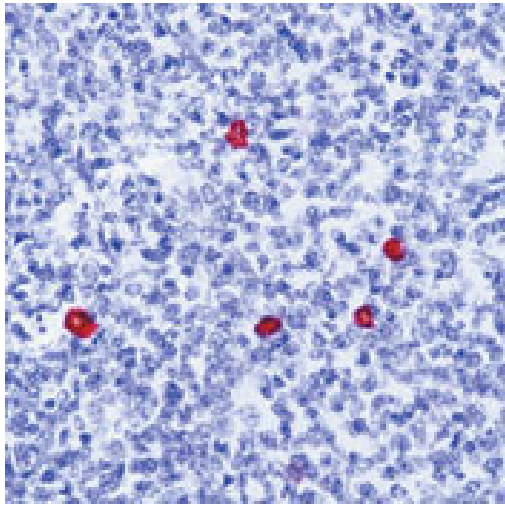
Product Specific Information

PA5-16400 targets Human IgD (delta-Heavy Chain) in IHC (P) and WB applications and shows reactivity with Human samples.

The PA5-16400 immunogen is igD isolated from a pool of normal human sera.



Human IgD (Heavy chain) Secondary Antibody (PA5-16400) in WB
Western blot analysis of Human IgD was performed by loading 25 µg of Ramos cell lysates onto an SDS polyacrylamide gel. Proteins were transferred to a PVDF membrane and blocked at 4°C overnight. The membrane was probed with a Rabbit anti-Human IgD (delta-Heavy Chain) secondary antibody (Product # PA5-16400) at a dilution of 1:200 overnight at 4°C, washed in TBST, and probed with an HRP-conjugated secondary antibody for 1 hr at room temperature in the dark. Chemiluminescent detection was performed using Pierce ECL Plus Western Blotting Substrate (Product # 32132). Results show a band at ~50-75 kDa.



Human IgD (Heavy chain) Secondary Antibody (PA5-16400) in IHC (P)
Formalin-fixed, paraffin-embedded human tonsil stained with IgD antibody using peroxidase-conjugate and AEC chromogen. Note cytoplasmic staining of Ig-secreting cells.

For Research Use Only. Not for use in diagnostic procedures. Not for resale without express authorization. Products are warranted to operate or perform substantially in conformance with published Product specifications in effect at the time of sale, as set forth in the Production documentation, specifications and/or accompanying package inserts ("Documentation"). No claim of suitability for use in applications regulated by FDA is made. The warranty provided herein is valid only when used by properly trained individuals. Unless otherwise stated in the Documentation, this warranty is limited to one year from date of shipment when the Product is subjected to normal, proper and intended usage. This warranty does not extend to anyone other than the Buyer. Any model or sample furnished to Buyer is merely illustrative of the general type and quality of goods and does not represent that any Product will conform to such model or sample. NO OTHER WARRANTIES, EXPRESS OR IMPLIED, ARE GRANTED INCLUDING WITHOUT LIMITATION, IMPLIED WARRANTIES OF MERCHANTABILITY, FITNESS FOR ANY PARTICULAR PURPOSE, OR NON-INFRINGEMENT. BUYER'S EXCLUSIVE REMEDY FOR NON-CONFORMING PRODUCTS DURING THE WARRANTY PERIOD IS LIMITED TO REPAIR, REPLACEMENT OF OR REFUND FOR THE NON-CONFORMING PRODUCT(S) AT SELLER'S SOLE OPTION. THERE IS NO OBLIGATION TO REPAIR, REPLACE OR REFUND FOR PRODUCTS AS THE RESULT OF (I) ACCIDENT, DISASTER OR EVENT OF FORCE MAJEURE, (II) MISUSE, FAULT OR NEGLIGENCE OF OR BY BUYER, (III) USE OF THE PRODUCTS IN A MANNER FOR WHICH THEY WERE NOT DESIGNED, OR (IV) IMPROPER STORAGE AND HANDLING OF THE PRODUCTS. Unless otherwise expressly stated on the Product or in the documentation accompanying the Product, the Product is intended for research only and is not to be used for any other purpose, including without limitation, unauthorized commercial uses, in vitro diagnostic uses, ex vivo or in vivo therapeutic uses, or any type of consumption by or application to human or animals.